



11 Thistle Street
Galashiels, Scottish Borders
TD1 1LX



2



1



1

Please contact us for
more information:

0131 555 7055
property@watermans.co.uk





Summary

Enjoying an elevated outlook towards the surrounding hills, along with a private front garden and unrestricted on-street parking, this two-bedroom maisonette forms a charming home for professionals or young families, set in the vibrant Borders town of Galashiels, within walking distance of central amenities, rail links, schools, and beautiful countryside. The bright, well-presented interiors enjoy a tasteful neutral finish and include a comfortable living/dining room with a fireplace, a modern kitchen with a separate utility room, a spacious main bedroom and a single bedroom/ideal study – both with built-in storage, and a bathroom with a shower-over-bath.

Extras: All fitted floor and window coverings are included in the sale.

Features

- Charming maisonette in a vibrant Borders town
- Bright neutral interiors and a scenic elevated outlook
- Entrance hall with a utility room
- Comfortable living/dining room with feature fireplace
- Well-appointed modern kitchen
- One spacious double bedroom with storage
- One single bedroom/ideal study with storage
- Bathroom with shower-over-bath
- Private front garden with established planting
- Unrestricted on-street parking
- Gas central heating and double glazing









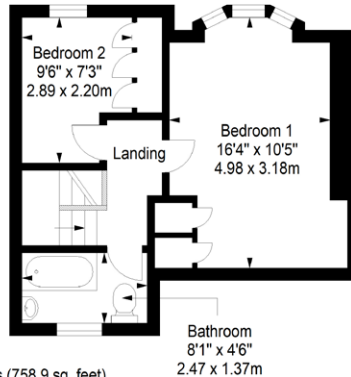
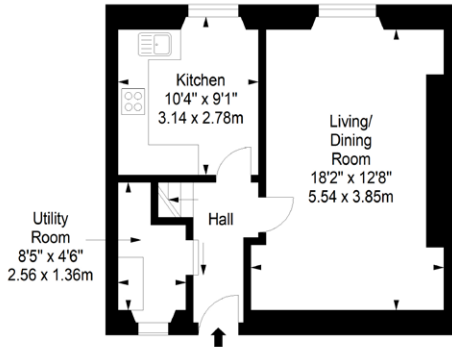
Floorplan



Ground Floor
Approx. 37.5 sq. metres (403.7 sq. feet)



First Floor
Approx. 33.0 sq. metres (355.2 sq. feet)



Total area: approx. 70.5 sq. metres (758.9 sq. feet)

Price & Viewings

Please refer to our website
www.watermans.co.uk

Edinburgh

5-10 Dock Place, Leith, EH6 6LU

0131 555 7055

property@watermans.co.uk

Glasgow

193 Bath Street, Glasgow, G2 4HU

0141 483 8325

westcoast@watermans.co.uk

espc

rightmove



EPC Rating - D | Council Tax Band - B | Home Report Value - £125,000

These particulars do not constitute part of an offer or contract. All statements contained herein whilst believed to be correct are in no way guaranteed. Intending purchasers should satisfy themselves by inspection or otherwise as to the correctness of each of the statements contained in these particulars. Prospective purchasers are advised to have their interest noted through their solicitor as soon as possible in order that they may be informed in the event of an early closing date being set for the receipt of offers.