



Guide Price
£180,000

Freehold

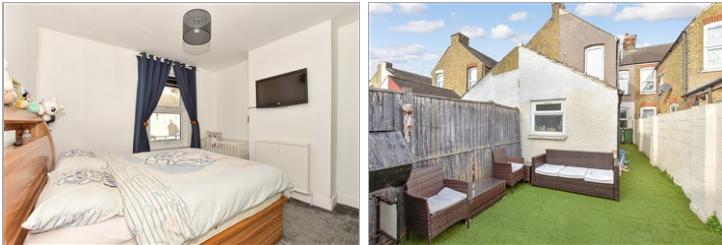
3x  1x  1x 

**Jefferson Road,
Sheerness, Kent, ME12**

OVER 60?

Secure this property
for up to **59% less!**

Wards
Helping you move forwards



Main features

- Ideal property for first time buyers
- Stylish kitchen with space for appliances
- Close to local schools plus the Blue Flag awarded beach
- Private rear garden, ideal for summer barbecues
- Take a short stroll to the town centre and train station

Accommodation

GROUND FLOOR

Entrance Hall

Lounge/Diner: 24'9 x 12'3 (7.55m x 3.74m)

Kitchen: 10'1 x 7'3 (3.08m x 2.21m)

Utility Room: 7'2 x 5'10 (2.19m x 1.78m)

Lobby

Bathroom: 7'10 x 6'9 (2.39m x 2.06m)

FIRST FLOOR

Landing

Bedroom 1: 12'3 x 12'2 (3.74m x 3.71m)

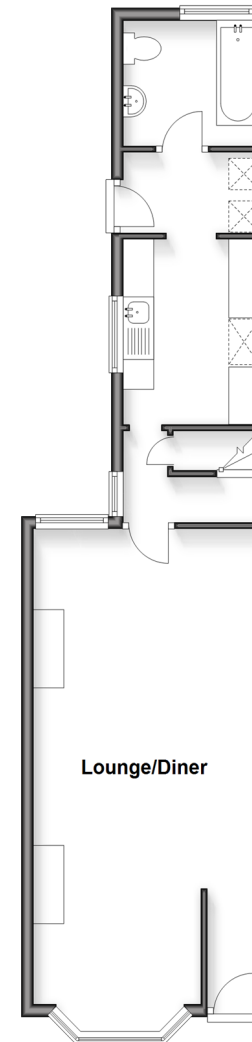
Bedroom 2: 11'8 x 9'3 (3.56m x 2.82m)

Bedroom 3: 10'0 x 7'4 (3.05m x 2.24m)

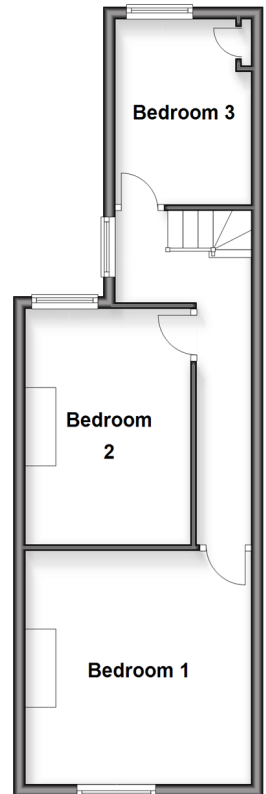
OUTSIDE

Rear Garden

Ground Floor
Approx. 46.5 sq. metres (500.5 sq. feet)



First Floor
Approx. 38.4 sq. metres (413.7 sq. feet)



Call Sheerness - 01795 664651 ■ wardsof Kent.co.uk

- Legal advice should be taken to verify fixtures/fittings, planning, alterations and/or lease details
- Appliances & services are untested, dimensions are approximate and floor plans are not to scale
- Through a Homewise Home For Life Plan people aged 60+ can secure this property for up to 50% less, by purchasing a Lifetime Lease.



11635781/20251022/JLS/JLS