

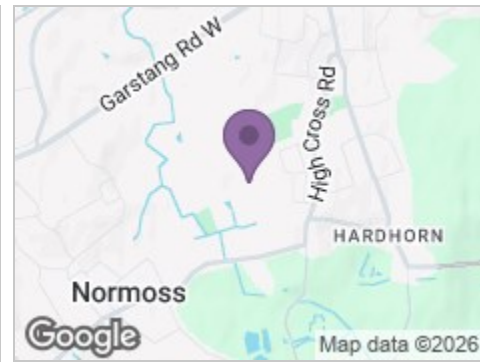
Road Map



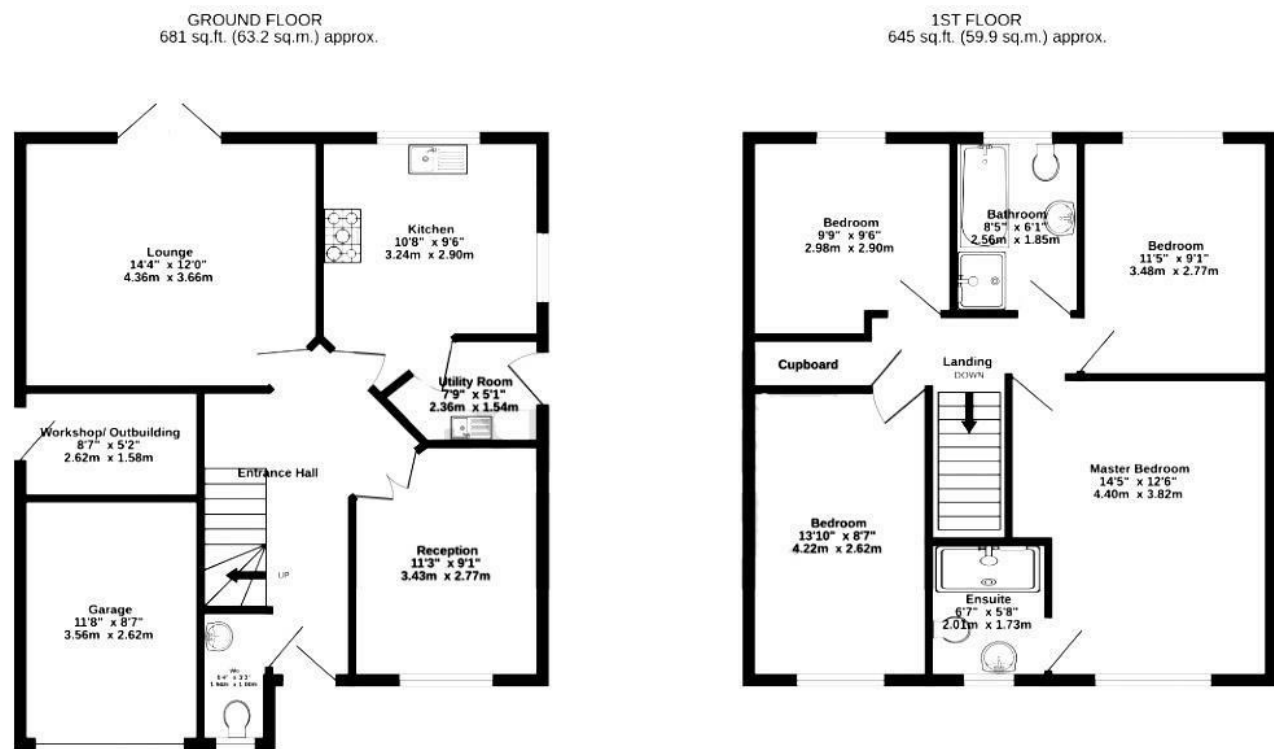
Hybrid Map



Terrain Map



Floor Plan



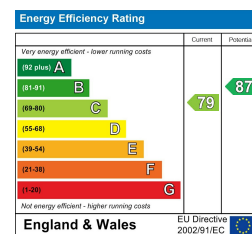
TOTAL FLOOR AREA : 1325 sq.ft. (123.1 sq.m.) approx.
Measurements are approximate. Not to scale. Illustrative purposes only.
Made with Metropix ©2024

Viewings

Please contact our iMove Sales & Lettings Office on 01253 883311 if you wish to arrange a viewing appointment for this property or require further information.

These particulars, whilst believed to be accurate are set out as a general outline only for guidance and do not constitute any part of an offer or contract. Intending purchasers should not rely on them as statements of representation of fact, but must satisfy themselves by inspection or otherwise as to their accuracy. No person in this firm's employment has the authority to make or give any representation or warranty in respect of the property.

Energy Efficiency Graph



10 Benedict Drive
, Blackpool, FY3 0EN

Offers In The Region Of £280,000 4 2 2 C



10 Benedict Drive

, Blackpool, FY3 0EN

Offers In The Region Of £280,000



Hallway

Door to front providing access from front driveway. Stairs to side leading to first floor landing. Access to all ground floor rooms. Wood flooring throughout, ceiling light and radiator.

Ground Floor WC

6'5" x 6'1"

UPVC double glazed opaque window to front. Low flush WC and pedestal wash hand basin. Wood flooring throughout, ceiling light and radiator.

Dining Room

11'3" x 9'1"

UPVC double glazed window to front. Versatile reception space presently presented as a Dining Room. Wood flooring throughout, ceiling light and radiator.

Lounge

14'3" x 12'0"

UPVC double glazed French style patio doors leading out to rear garden. Wood flooring throughout, ceiling light and radiator.

Kitchen

10'7" x 9'6"

UPVC double glazed window to rear. Range of wall and base units with complimentary worktops above. Gas hob with electric oven beneath and extractor fan above. Integral fridge and freezer, 1.5 stainless steel sink unit. Integral dishwasher. Tiled floor ceiling light and access to Utility Room.

Utility Room

7'8" x 5'0"

UPVC door to side provide exterior access. Plumbing for washing machine. Cupboard housing boiler. Tiled floor and ceiling light

First Floor Landing

Access to all first floor rooms. Loft access. Carpet, ceiling lights and radiator.

Bedroom One

14'5" x 12'6"

UPVC double glazed window to front. Carpet, ceiling light and radiator. Access to En Suite

En Suite

6'7" x 5'8"

UPVC double glazed opaque window to front. Three piece bathroom suite comprising; shower cubicle, pedestal wash hand basin and low flush WC. Tiled wall and floor. Towel heater and ceiling light.

Bedroom Two

9'9" x 9'6"

UPVC double glazed window to front. Carpet, ceiling light and radiator.

Bedroom Three

13'10" x 10'8"

UPVC double glazed window to rear. Carpet, ceiling light and radiator.

Bedroom Four

11'5" x 9'1"

UPVC double glazed window to rear. Carpet, ceiling light and radiator. Presently presented as Office/Man Cave

Bathroom

8'4" x 6'0"

UPVC double glazed opaque window to rear. Four piece bathroom suite comprising; panel bath, shower cubicle, pedestal wash hand basin and low flush WC. Tiled wall and floor. Towel heater and ceiling light.

Further Information

Tenure - Leasehold - 999 years from build

Freehold can be acquired

Council Tax Band - E - Wyre Borough Council

agents disclaimer

These particulars, whilst believed to be accurate are set out as a general guideline and do not constitute any part of an offer or contract. Intending Purchasers should not rely on them as statements of representation of fact, but must satisfy themselves by inspection or otherwise as to their accuracy. Please note that we have not tested any apparatus, equipment, fixtures, fittings or services including gas central heating and so cannot verify they are in working order or fit for their purpose. Furthermore, Solicitors should confirm moveable items described in the sales particulars and, in fact, included in the sale since circumstances do change during the marketing or negotiations. Although we try to ensure accuracy, if measurements are used in this listing, they may be approximate. Therefore if intending Purchasers need accurate measurements to order carpeting or to ensure existing furniture will fit, they should take such measurements themselves. Photographs are reproduced general information and it must not be inferred that any item is included for sale with the property.

