



**Hartfields, Hartlepool TS26 0NW**

**welcome to**

## **Hartfields, Hartlepool**

Hartfields over 60's development is a haven for those seeking a vibrant and fulfilling lifestyle. Nestled in a serene and picturesque location in Bishop Cuthbert, Hartlepool, this community offers a range of apartments and cottages designed specifically for independent living.

### **303 Hartfields Manor**

This apartment briefly comprises of an entrance hallway with storage, fitted kitchen, lounge, 2 bedrooms and wet room.

### **Externally**

For those who appreciate the beauty of nature, our development features communal outdoor areas where you can bask in the tranquillity of the surroundings. Whether it's enjoying a leisurely stroll through our landscaped gardens or organising a picnic with fellow residents, these outdoor spaces provide the perfect setting to relax and connect with nature.

### **Disclaimer**

Please note these photos are for illustrative purposes only and individual properties may differ

### **Support Services**

Support services are readily available at Hartfields, ensuring that you have access to assistance whenever required. Our dedicated team is committed to providing a safe and secure environment, offering peace of mind to both residents and their families. Local authority funded care is currently provided by an inhouse team at Hartfields. Joseph Rowntree Housing Trust has started a process that means this is likely to change and that at the end of the next 6 months this service is likely to be provided by another third party provider - who this provider is will be determined the local authority.

### **Fee Information**

Monthly Management, Service Charge & Support Charge

(applies to FO & SO tenures, rent will be added to all shared ownership, see examples below)

Charges as of April 1st 2026

Service Charge £322.15

Support Charge £138.81

Management & Maintenance £161.53

Buildings Insurance £47.36

Total £669.85





***view this property online*** [mannersandharrison.co.uk/Property/HAR120398](https://mannersandharrison.co.uk/Property/HAR120398)



welcome to

## Hartfields, Hartlepool

- Over 60's development
- Onsite parking
- Close to local amenities & bus routes
- Support services available (if required)
- Extensive community facilities

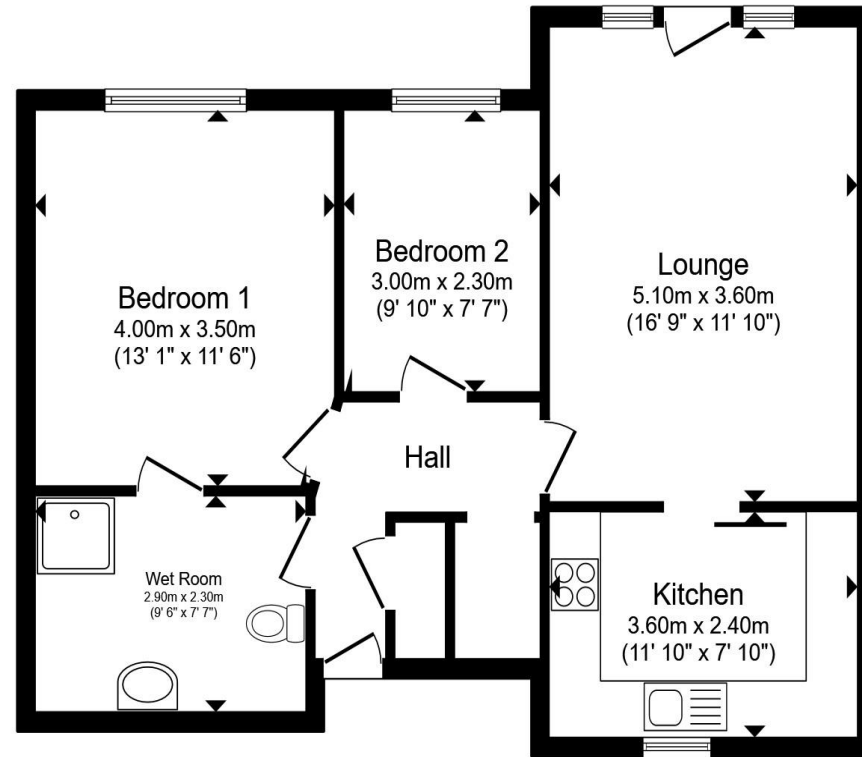
Tenure: Leasehold EPC Rating: B

Council Tax Band: B Service Charge: 5049.60

Ground Rent: Ask Agent

This is a Leasehold property. We are awaiting further details about the Term of the lease. For further information please contact the branch. Please note additional fees could be incurred for items such as Leasehold packs.

**£125,000**



Total floor area 64.0 m<sup>2</sup> (689 sq.ft.) approx

This floor plan is for illustrative purposes only. It is not drawn to scale. Any measurements, floor areas (including any total floor area), openings and orientation are approximate. No details are guaranteed, they cannot be relied upon for any purpose and they do not form part of any agreement. No liability is taken for any error, omission or misstatement. A party must rely upon its own inspection(s). Powered by [www.propertybox.io](http://www.propertybox.io)



**view this property online** [mannersandharrison.co.uk/Property/HAR120398](http://mannersandharrison.co.uk/Property/HAR120398)



Property Ref:  
HAR120398 - 0005

1. MONEY LAUNDERING REGULATIONS Intending purchasers will be asked to produce identification documentation at a later stage and we would ask for your co-operation in order that there is no delay in agreeing the sale. 2. These particulars do not constitute part or all of an offer or contract. 3. The measurements indicated are supplied for guidance only and as such must be considered incorrect. Potential buyers are advised to recheck measurements before committing to any expense. 4. We have not tested any apparatus, equipment, fixtures or services and it is in the buyers interest to check the working condition of any appliances. 5. Where an EPC, or a Home Report (Scotland only) is held for this property, it is available for inspection at the branch by appointment. If you require a printed version of a Home Report, you will need to pay a reasonable production charge reflecting printing and other costs. 6. We are not able to offer an opinion either written or verbal on the content of these reports and this must be obtained from your legal representative. 7. Whilst we take care in preparing these reports, a buyer should ensure that his/her legal representative confirms as soon as possible all matters relating to title including the extent and boundaries of the property and other important matters before exchange of contracts.

Manners & Harrison is a trading name of Sequence (UK) Limited which is registered in England and Wales under company number 4268443, Registered Office is Cumbria House, 16-20 Hockliffe Street, Leighton Buzzard, Bedfordshire, LU7 1GN. VAT Registration Number is 500 2481 05.

manners & harrison



**01429 261351**



[Hartlepool@mannersandharrison.co.uk](mailto:Hartlepool@mannersandharrison.co.uk)



Shrewsbury House 129 York Road,  
HARTLEPOOL, Durham, TS26 9DW



[mannersandharrison.co.uk](http://mannersandharrison.co.uk)