



**Guide Price**  
**£365,000**

**Freehold**

5x  1x  3x 

**Albert Road, Uckfield,  
East Sussex, TN22**

**OVER 60?**

Secure this property  
for up to **59% less!**

**cubitt&west**  
Helping you move forwards





## Main features

- Substantial Victorian home in need of modernisation
- Study plus loft room
- Character features including sash windows & fireplaces
- Parking & garden
- Offered with no onward chain

## Accommodation

### GROUND FLOOR

Hallway  
Cloakroom  
Lounge: 12'2 x 12'1 (3.71m x 3.69m)  
Dining Room: 12'1 x 10'0 (3.69m x 3.05m)  
Utility Room: 9'2 x 6'0 (2.80m x 1.83m)  
Kitchen Area: 8'6 x 7'1 (2.59m x 2.16m)  
Breakfast Area: 9'0 x 8'4 (2.75m x 2.54m)  
Sitting Room: 12'2 x 11'2 (3.71m x 3.41m)

### FIRST FLOOR

Landing  
Bedroom 1: 12'2 x 11'3 (3.71m x 3.43m)  
Bedroom 2: 12'2 x 8'0 (3.71m x 2.44m)  
Bedroom 3: 15'9 into bay x 12'1 (4.80m x 3.69m)  
Bathroom  
Office: 5'5 x 4'5 (1.65m x 1.35m)

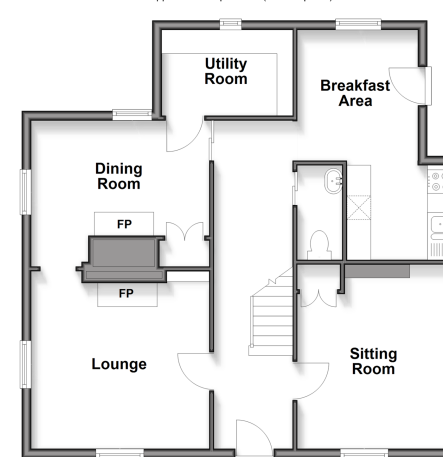
### SECOND FLOOR

Bedroom 4: 10'3 x 8'8 (3.13m x 2.64m)  
Bedroom 5: 8'9 x 8'8 (2.67m x 2.64m)

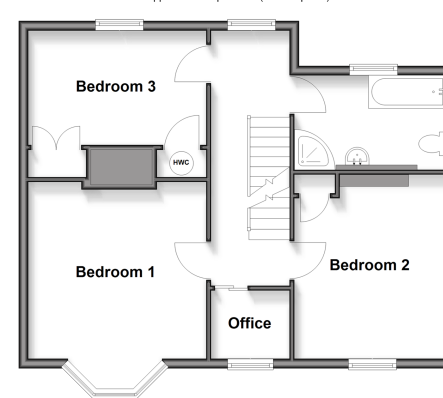
### OUTSIDE

Front & Rear Gardens  
Off-Road Parking

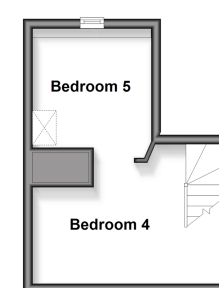
**Ground Floor**  
Approx. 71.1 sq. metres (765.5 sq. feet)



**First Floor**  
Approx. 58.5 sq. metres (630.0 sq. feet)



**Second Floor**  
Approx. 18.2 sq. metres (195.9 sq. feet)



**Call Uckfield - 01825 768915 ■ [cubittandwest.co.uk](http://cubittandwest.co.uk)**

- If buying to let, the energy rating will need to be improved to at least 'E' rating before you can let the property
- Legal advice should be taken to verify fixtures/fittings, planning, alterations and/or lease details
- Appliances & services are untested, dimensions are approximate and floor plans are not to scale
- Through a Homewise Home For Life Plan people aged 60+ can secure this property for up to 50% less, by purchasing a Lifetime Lease.



22824236/20251122/JL/RSE