



Kidderpore Avenue, NW3

£1,350,000

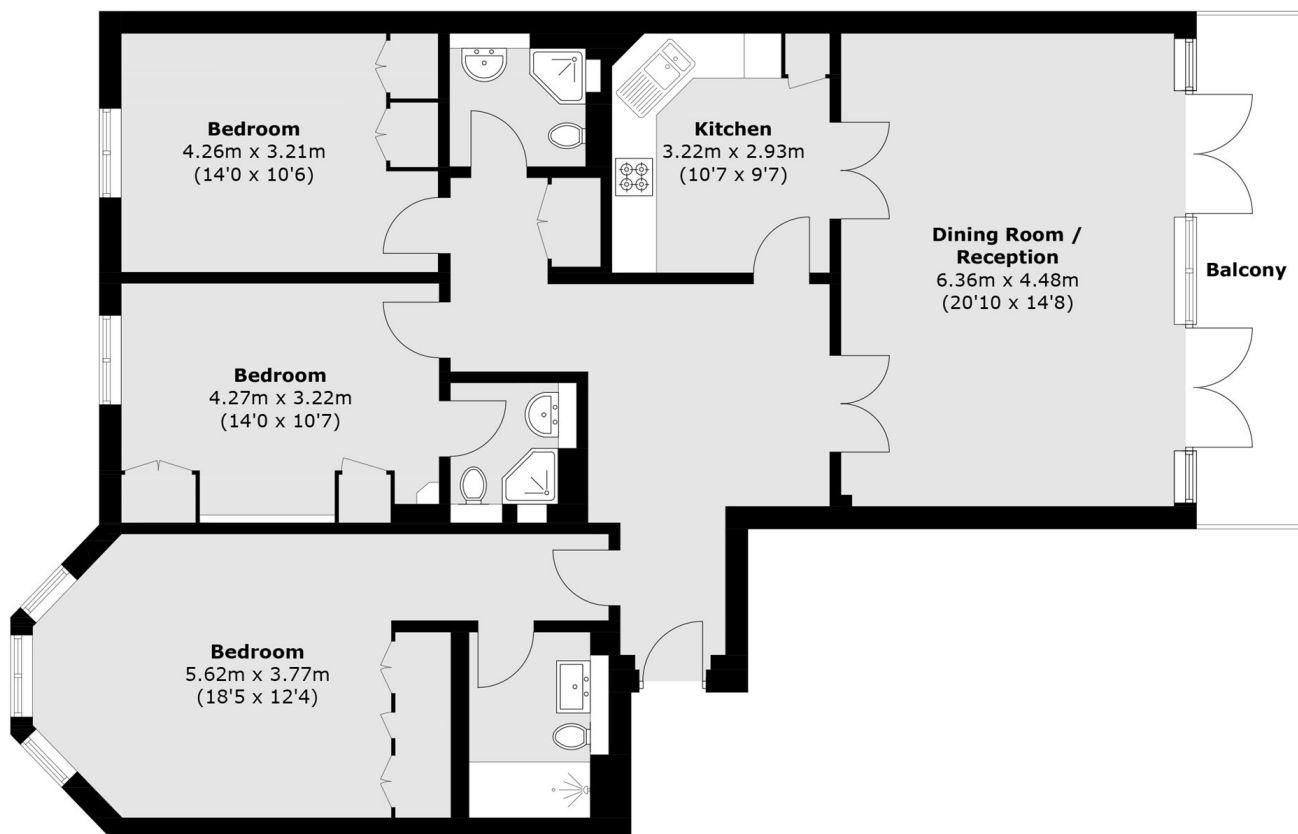
A well-proportioned three bedroom second floor apartment offering excellent lateral space and comfortable living. The property includes three bathrooms, a balcony off the reception room, and access to communal gardens, as well as concierge services, a residents' gym, and swimming pool. Further benefits include one secure underground parking space.

This highly sought after and prestigious development is located within easy access of Hampstead tube station with Northern line services to the centre of London. Finchley Road & Finchley Road and Frognal stations are also accessible offering Metropolitan, Jubilee Line & Thameslink services.

Features

- Prestigious Development
- Concierge
- Swimming Pool
- Gym
- Communal Gardens
- Three Bedrooms

Kidderpore Avenue, London, NW3



Total area (approx.): 124.3 sq. m (1,337.9 sq. ft)
Balcony : 10.1 sq. m (108 sq. ft)