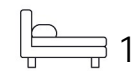




Living  
made  
better

Capital East  
Royal Victoria Dock, E16 1AS



£1,700 PCM

# Capital East, Royal Victoria Dock, E16 1AS

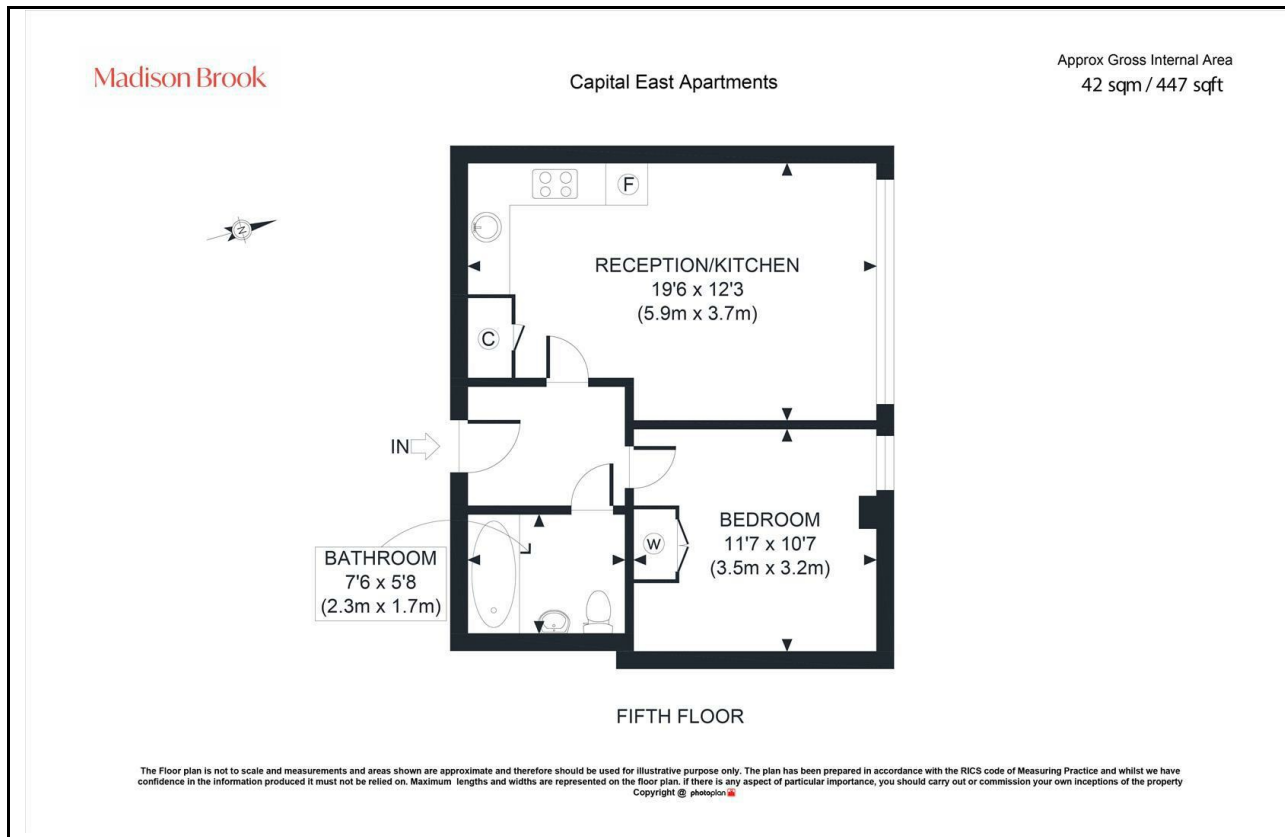
Madison Brook

## Property Summary

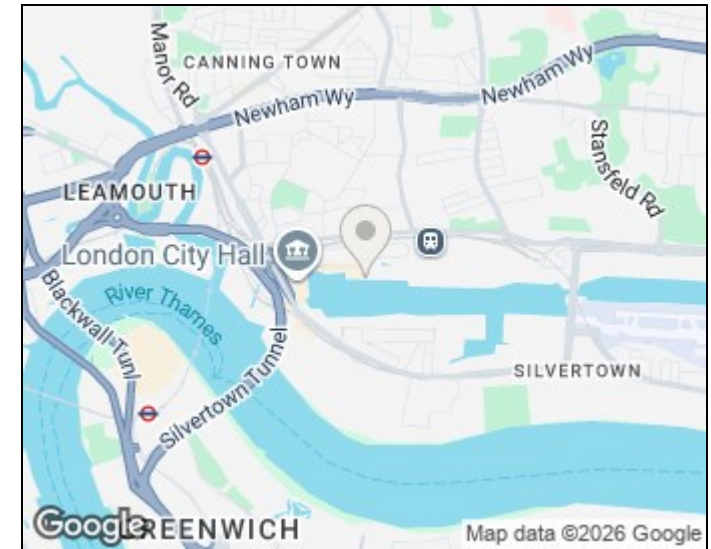
Set on the fifth floor of the popular Capital East development, this stylish one-bedroom apartment offers bright, modern living in the heart of Royal Victoria Dock. The property features a spacious reception with floor-to-ceiling windows, open-plan kitchen with integrated appliances, a generous double bedroom with built-in storage, and a sleek bathroom.

Residents enjoy access to a 24-hour concierge, gym, and sauna. With Royal Victoria DLR and Custom House Elizabeth Line stations just moments away, and a wide choice of local cafés, bars, and shops nearby, this apartment offers superb convenience and connectivity.

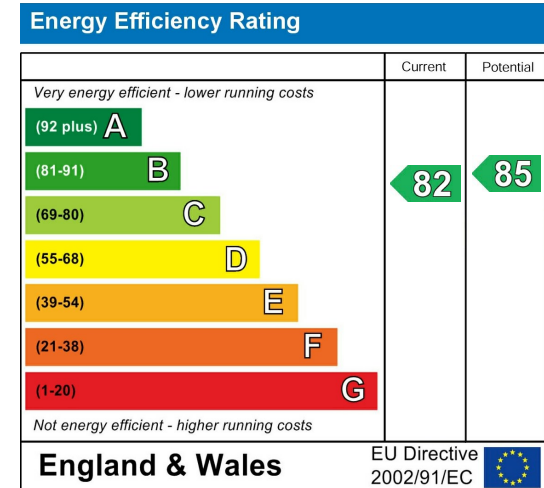
## Floorplan



## Area Map



## Energy Efficiency Graph



These particulars, whilst believed to be accurate are set out as a general outline only for guidance and do not constitute any part of an offer or contract. Intending purchasers should not rely on them as statements of representation of fact, but must satisfy themselves by inspection or otherwise as to their accuracy. No person in this firm's employment has the authority to make or give any representation or warranty in respect of the property.

Unit B 20 Western Gateway, Royal Victoria  
Dock, London, E16 1BS  
Tel: 020 3946 6000 Email:  
docklands@madisonbrook.com  
<https://madisonbrook.com/>