



Chudleigh Way, Ruislip - HA4 8TS

Guide Price £625,000 | Freehold



LAWRENCE RAND



Key Features & Description

- Three Bedrooms
- Terraced House
- Driveway
- Two Bathrooms
- Two Reception Rooms
- Conservatory / Family Room

A well-presented three-bedroom terraced home situated on Chudleigh Way in Ruislip, offering the perfect blend of comfortable family living and excellent convenience. Set within a quiet, residential neighbourhood, the property benefits from a peaceful setting while remaining within easy reach of everyday essentials.

The home features two generously sized bedrooms and a third smaller bedroom. On the ground floor there is a bright and spacious living areas, and a well-appointed kitchen, making it ideal for families or professionals alike. A private rear garden provides the perfect space for relaxing or entertaining, while off-street parking further enhances practicality.

Ideally located just a short distance from Ruislip Manor tube station, the property offers excellent transport links via the Metropolitan and Piccadilly lines, providing direct access into Central London.

Residents will also benefit from a wide range of local amenities, including shops, cafés, supermarkets, and restaurants along Victoria Road, forming the heart of the vibrant Ruislip Manor community. The area is well regarded for its strong transport connections.

Presented with care by Lawrence Rand – helping you find the place you'll love to call





Nearest Stations

Ruislip Manor Station – approx 0.2 miles

Eastcote Station – approx 0.5 miles

Ruislip Station – approx 0.6

Verified Information:

Council Tax band: D

EPC Rating : C

Suppliers:

Electricity supply: Mains,

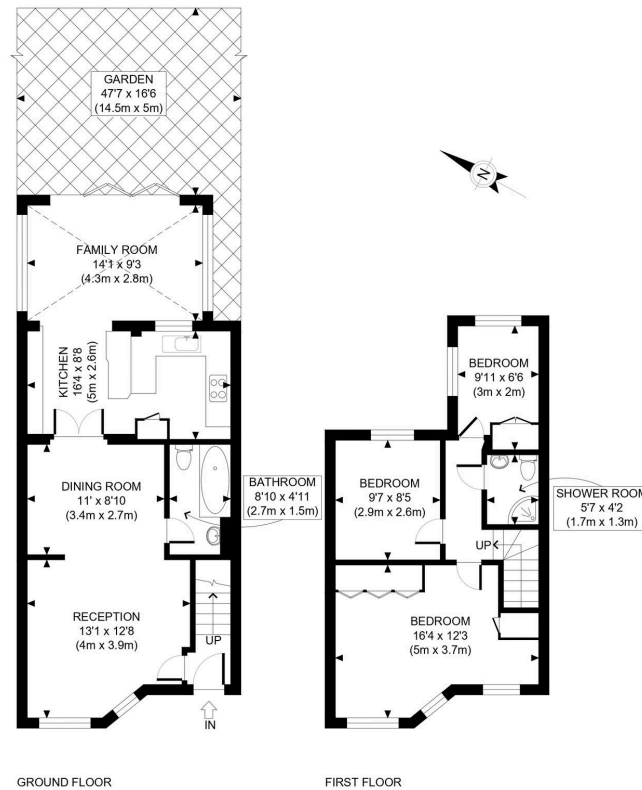
Water supply: Mains

Water Sewerage: Main Heating: Gas

Broadband & mobile coverage:

Broadband: FTTP (Fibre to the Premises) Mobile coverage: O2 - Excellent, Vodafone - Excellent, Three - Excellent, EE Excellent





APPROX. GROSS INTERNAL FLOOR AREA: 1068 SQ FT/ 99.2 SQM



This plan is for illustrative purposes only and should be used as such by any prospective client. Whilst every attempt has been made to ensure the accuracy of the Floor Plan contained here, measurements of the doors, windows, rooms and any other items are approximate and no responsibility is taken for any errors, omissions, or misstatement. The services, systems and appliances shown have not been tested and no guarantee as to the operability or efficiency can be given.

PROPERTY PHOTO PLANS

Lawrence Rand
 51 Victoria Road, Ruislip - HA4 9BH
 01895 632211
 sales@lawrence-rand.co.uk
 www.lawrence-rand.co.uk/

Lawrence Rand Limited has made every reasonable effort to ensure the accuracy of the information provided. However, we accept no responsibility for errors, omissions, or misstatements. All measurements, distances, and descriptions are approximate and for guidance only. Prospective purchasers or tenants must verify all details independently. Some images may include AI-generated virtual staging to illustrate the potential of the property and are for visual guidance only. No warranty is given or implied, and these particulars do not form part of any offer or contract. Lawrence Rand reserves the right to amend or withdraw any property without notice.