



Luscombe Maye
Since 1873

French Furze Road, Blackawton

Guide Price £127,500

3 2 2



DESCRIPTION Luscombe Maye are proud to present this beautifully appointed three-bedroom detached home, offering stylish living in a sought-after location. Upon entering, you are greeted by a spacious hallway leading to the open-plan kitchen and dining area, thoughtfully designed with sleek modern units, integrated appliances, and contemporary finishes throughout. A separate living room is perfect for relaxing or entertaining, with large windows that flood the space with natural light. French doors open directly onto the south-facing rear garden, creating a seamless connection between indoor and outdoor living—ideal for enjoying sunny afternoons and al fresco dining. A separate living room is perfect for relaxing or entertaining, with large windows that flood the space with natural light. Upstairs, the property offers three generously sized bedrooms, including a principal bedroom with built-in storage. The family bathroom is finished to a high standard, featuring a modern white suite, chrome fittings, and a shower over the bath. The south-facing garden is a true highlight—private and well-proportioned, mainly laid to lawn with a patio area, mature borders, and space for outdoor seating or play. A garden shed provides added convenience. This home combines comfort, style, and practicality, making it an ideal choice for families or professionals seeking a peaceful yet well-connected lifestyle.

SERVICES Mains Electricity, Mains Water and Mains Drainage.

PARKING Single garage with up and over door, power and light and driveway parking for several vehicles.

TENURE Leasehold at 30% ownership at £127,500. Shared ownership.
Monthly Rent- £757.26 to be paid alongside monthly mortgage payments.
Monthly service charge & building insurance - £40.51

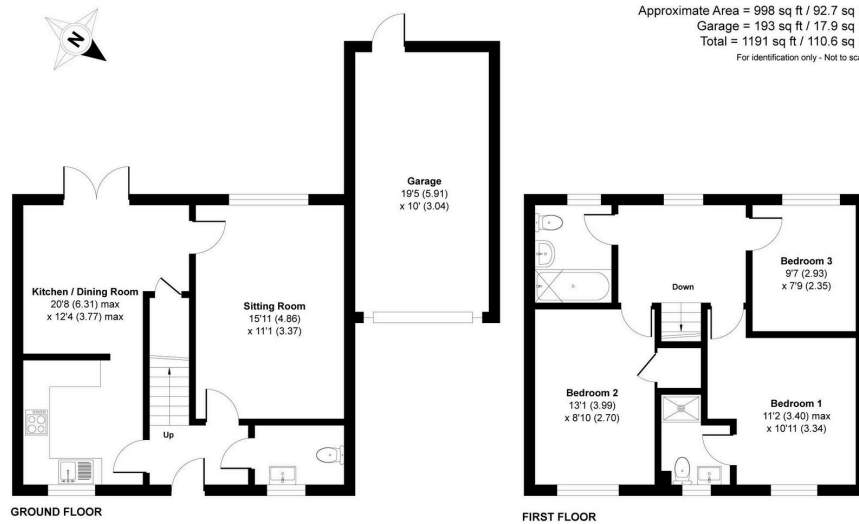
LOCAL AUTHORITY South Hams District Council. Follaton House, Plymouth Road, Totnes TQ9 5NE Council Tax Band D

DIRECTIONS What3Words - [taxed.over.prompting](#)



French Furze Road, Blackawton, Totnes, TQ9

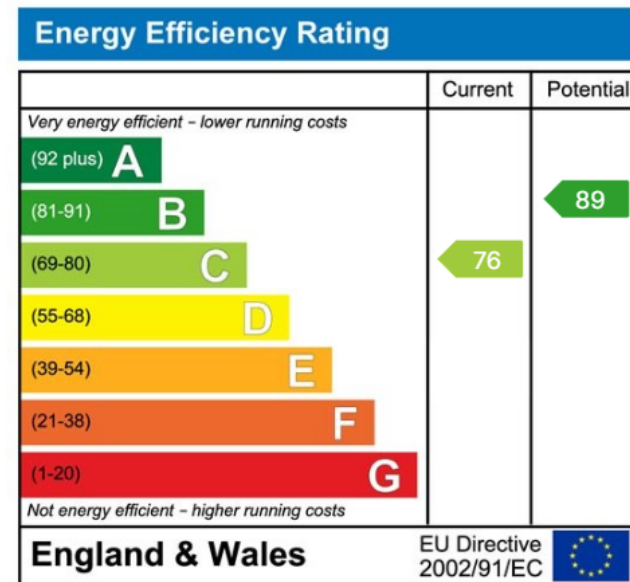
Approximate Area = 998 sq ft / 92.7 sq m
Garage = 193 sq ft / 17.9 sq m
Total = 1191 sq ft / 110.6 sq m
For identification only - Not to scale



Floor plan produced in accordance with RICS Property Measurement 2nd Edition, incorporating International Property Measurement Standards (IPMS2 Residential). © richcom 2025. Produced for Luscombe Maye. REF: 1361304



- No Forward Chain
- Three Bedroom
- Garage and Driveway
- Downstairs WC
- Highly Sought After Village Location
- Shared Ownership 30%
- Detached Property
- Separate Living Room
- South Facing Garden
- Far Reaching Countryside Views



Important Notice: Luscombe Maye gives notice that: 1. These particulars do not constitute an offer or contract or part thereof. 2. All descriptions, photographs and plans are for guidance only and should not be relied upon as statements or representations of fact. All measurements are approximate and not necessarily to scale. Any prospective purchaser must satisfy themselves of the correctness of the information within the particulars by inspection or otherwise. 3. Luscombe Maye does not have any authority to give any representations or warranties whatsoever in relation to this property (including but not limited to planning/building regulations), nor can it enter into any contract on behalf of the Vendor.



Totnes:
59 Fore Street, Totnes TQ9 5NJ
01803 869920
totnes@luscombemaye.com
www.luscombemaye.com