






MALLINSON  
& CO

INNOVATIVE PROPERTY EXPERTS



# Hole House Lane, Stocksbridge, Sheffield, S36 1BT

Offers In Region Of £190,000

 3  1  2

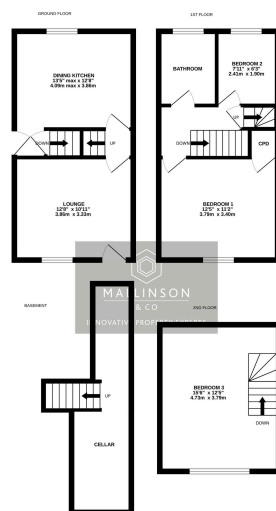


- FULLY RENOVATED
- THREE BEDROOMS
- NEW BATHROOM
- OFF-STREET PARKING
- MODERN FINISHES THROUGHOUT
- MODERN END OF TERRACE
- NEW KITCHEN
- PRIMARY DORMER SUITE
- LOW-MAINTENANCE GARDEN
- GREAT LOCATION

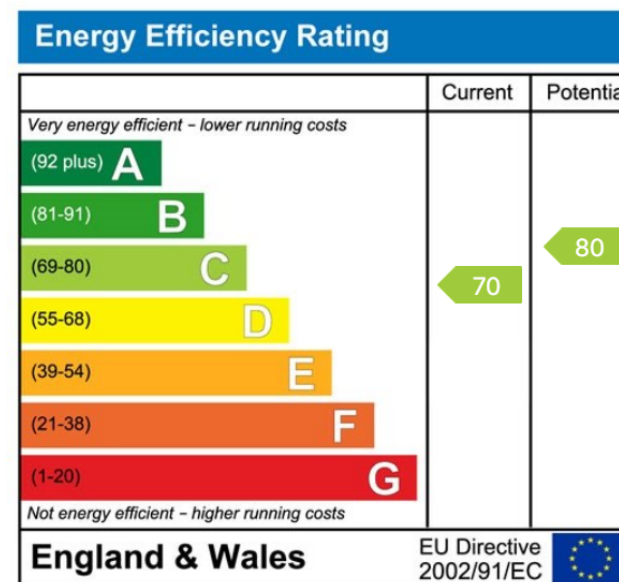




FULLY RENOVATED THROUGHOUT! ... THIS BEAUTIFULLY FINISHED THREE BEDROOM END OF TERRACE PROPERTY HAS UNDERGONE A COMPLETE TRANSFORMATION, CREATING A STYLISH, CONTEMPORARY AND MOVE IN READY HOME.



TOTAL FLOOR AREA: 813 sq ft (75.5 sq m) approx.  
While every effort has been made to ensure the accuracy of the floorplan contained here, measurements of doors, windows, rooms and any other areas are approximate and no responsibility is taken for any error, omission or mis-statement. This plan is for illustrative purposes only and should be used as a guide only by any prospective purchaser. The contents, fixtures and appliances shown here are not intended to be guaranteed as to their quantity or efficiency can be given.  
Made with Intertec (SIS)



INNOVATIVE  
PROPERTY  
EXPERTS

**Mallinson & Co**

Office: 01226 414 150

Email: [ben@mallinsonandco.co.uk](mailto:ben@mallinsonandco.co.uk)

Web: [www.mallinsonandco.co.uk](http://www.mallinsonandco.co.uk)

Suite 6, Penistone 1, St. Mary's Street, Penistone, S36 6DT