



RALPH SAYER
SOLICITORS & ESTATE AGENTS

7/3F2, Lyne Street

Abbeyhill, Edinburgh, EH7 5DN

7/3F2, Lyne Street

This traditional top floor city flat is a charming one-bedroom residence with a box room. It features an open-plan reception area and includes a modern kitchen and shower room. The home is ideal for a wealth of buyers, especially with its central location in sought-after Abbeyhill. It is in easy reach of fantastic amenities and restaurants, as well as bus and tram links, and iconic green spaces such as Calton Hill, Arthur's Seat and Holyrood Park. It is also within easy walking distance of the St James Quarter and city centre.

Extras: All fitted floor and window coverings, light fittings, and appliances to be included in the sale.



Property Summary

- Top floor city flat in move-in condition
- Part of a traditional tenement building
- Highly desirable setting in Abbeyhill
- Neutral interior décor throughout
- Secure telephone-entry system
- Welcoming entrance hall
- Open-plan kitchen/living/dining room
- Large bedroom
- Useful box room for storage
- Modern shower room
- Enclosed communal rear garden
- Controlled permit parking (Zone N6)
- Electric heating and double glazing
- EPC Rating - F | Council Tax Band - B
- Home Report value - £175,000





A charming one-bedroom residence with a box room,
an open-plan kitchen/living/dining room and a modern shower room



Let us help you find your next
dream property!



RALPH SAYER
SOLICITORS & ESTATE AGENTS

property@ralphsayer.com
0131 225 5567
www.ralphsayer.com

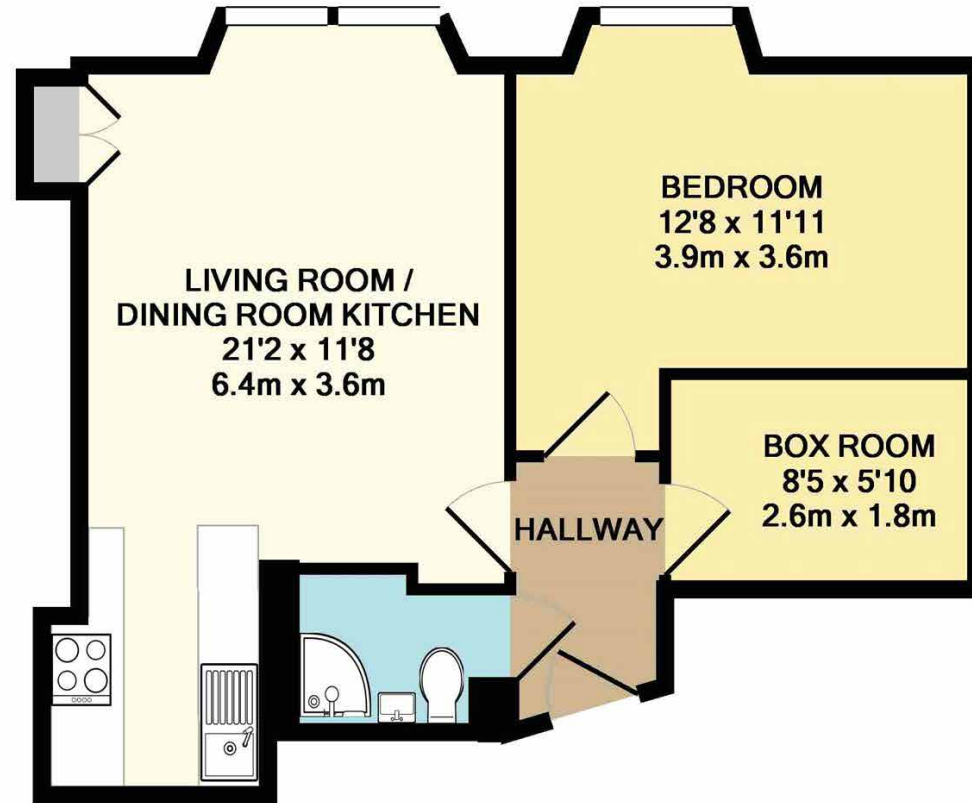
Birch House
10 Bankhead Crossway South
Edinburgh, EH11 4EP

 **CHARTERED FIRM**

DISCLAIMER

Interested parties are advised to note interest through a solicitor, so that they are notified of any closing date, and on whose behalf their solicitor may request a copy of the seller's home report. These particulars do not form part of any contract and the statements or plans contained herein are not warranted nor to scale. Approximate measurements have been taken by electronic device at the widest point. Services and appliances have not been tested for efficiency or safety and no warranty is given as to their compliance with any regulations. Confirmation of Council tax bands can be obtained from the local Council websites. Where the property has been altered or extended in any way by the sellers or previous owners, we are not always in a position to verify, prior to preparation of the schedule of particulars, that all necessary Local Authority consents are available.



7-14 LYNE STREET
TOTAL APPROX. FLOOR AREA 434 SQ.FT. (40.3 SQ.M.)
Measurements are approximate. Not to scale. Illustrative purposes only
Made with Metropix ©2017