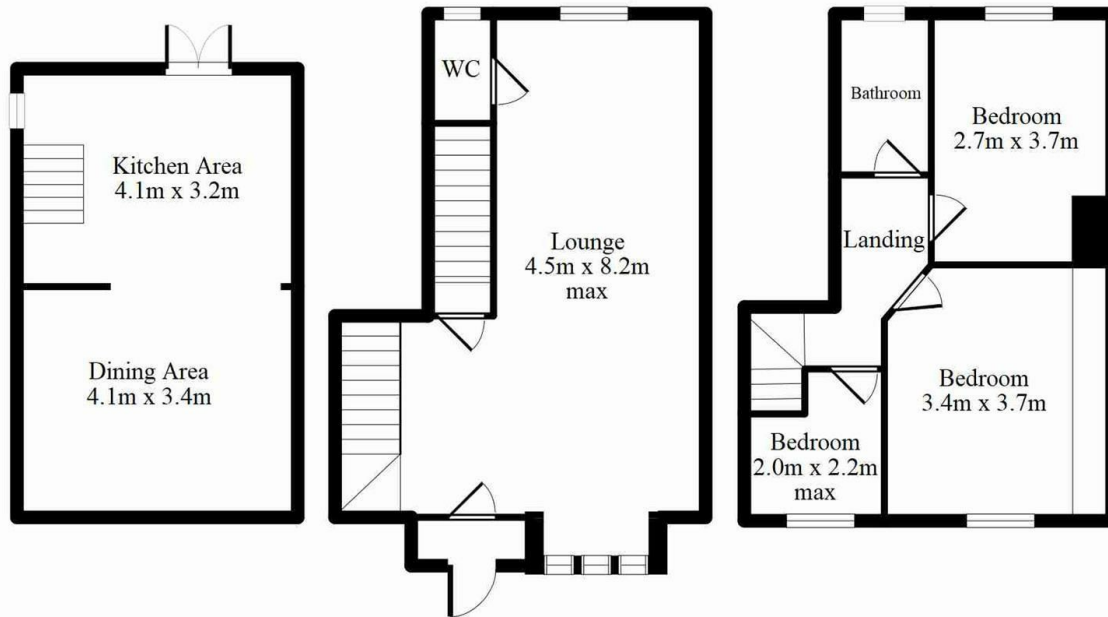




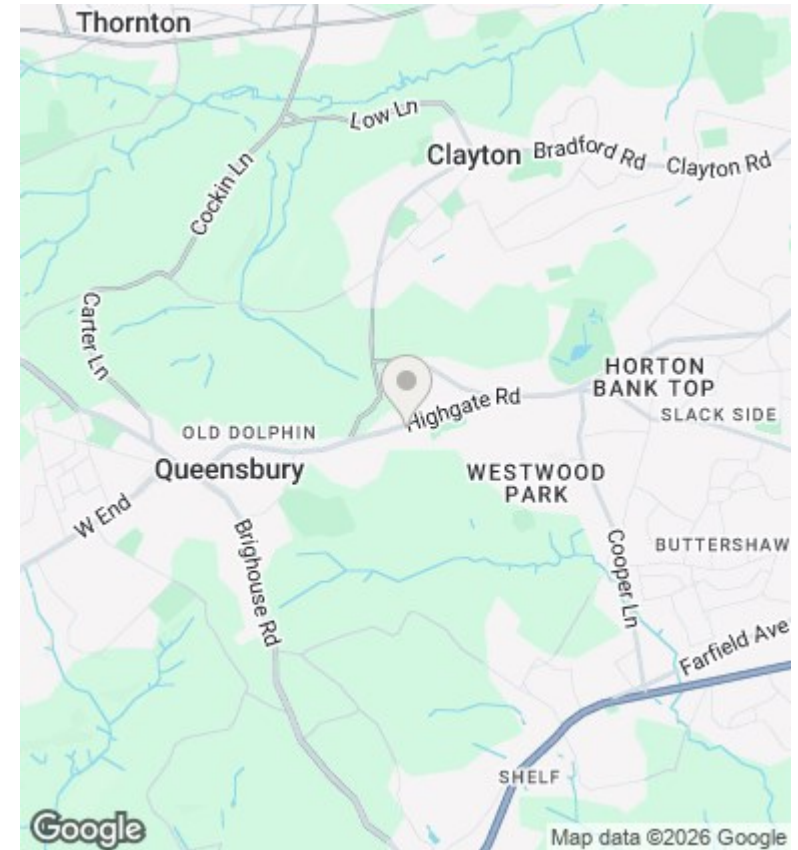
174 Highgate Road, Queensbury, Bradford, BD13 1DR

£185,000

- THREE BEDROOM MID-TOWNHOUSE
- POPULAR LOCATION
- ENCLOSED REAR GARDEN
- GAS CH & UPVC DG
- SET OVER THREE LEVELS
- MODERN KITCHEN & BATHROOM
- LARGE LIVING ROOM
- PANORAMIC OPEN VIEWS TO THE REAR
- OFF-ROAD PARKING TO THE FRONT
- SPACIOUS DINING-KITCHEN



Every attempt has been made to ensure this floor plan is accurate, however their accuracy is not guaranteed. The floorplan is for illustrative purposes and should be used in that context. GFPMS2026



Directions

Viewings

Viewings by arrangement only.
Call 01274884040 to make an appointment.

Council Tax Band

B

EPC Rating:

C

Energy Efficiency Rating		Current	Potential
Very energy efficient - lower running costs			
(92 plus) A			
(81-91) B			86
(69-80) C		71	
(55-68) D			
(39-54) E			
(21-38) F			
(1-20) G			
Not energy efficient - higher running costs			
England & Wales		EU Directive 2002/91/EC	