



9 Thistle Road

, Stockton-On-Tees, TS19 0NW

£140,000



NO ONWARD CHAIN!

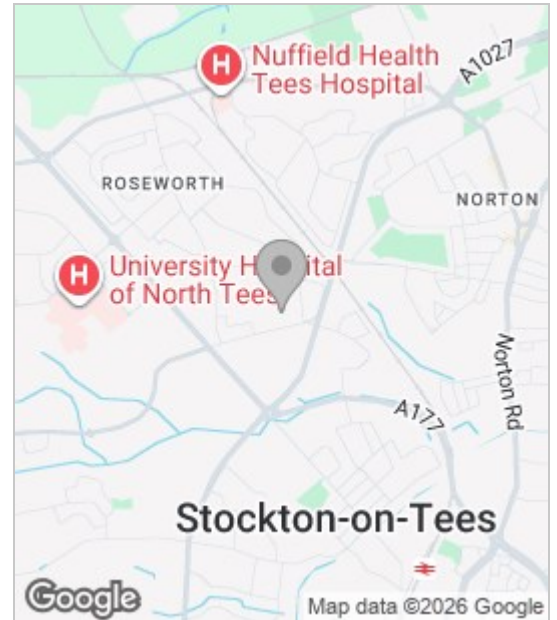
Nestled in the highly sought-after area of Thistle Road, Stockton-On-Tees, this charming house offers an exceptional opportunity for those seeking a comfortable and inviting home. The property boasts spacious accommodation, ensuring ample room for both relaxation and entertaining.

Upon entering, you will be greeted by a spacious hallway. The layout is thoughtfully designed, providing a perfect sense of functionality. The generous living spaces are ideal for family gatherings or quiet evenings in, while the natural light that floods through the windows enhances the overall appeal of the home.

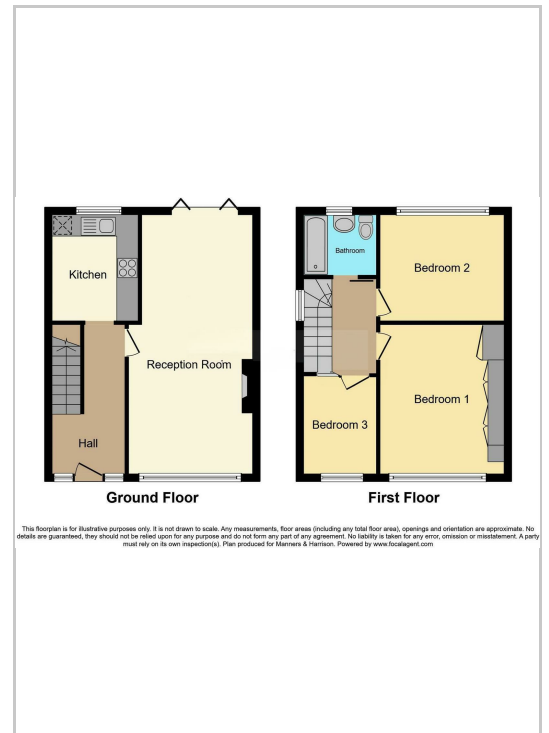
One of the standout features of this property is the spacious front & rear gardens, which not only adds to the aesthetic charm but also provides a delightful outdoor space for children to play or for hosting summer barbecues. Additionally, the detached garage offers practical storage solutions or the potential for a workshop, catering to various needs.



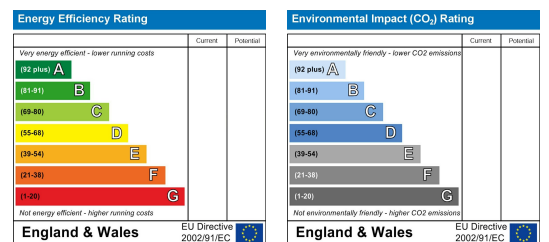
Area Map



Floor Plan



Energy Efficiency Graph



These particulars, whilst believed to be accurate are set out as a general outline only for guidance and do not constitute any part of an offer or contract. Intending purchasers should not rely on them as statements of representation of fact, but must satisfy themselves by inspection or otherwise as to their accuracy. No person in this firm's employment has the authority to make or give any representation or warranty in respect of the property.