

Franklyn James



Cable Street

, London, E1 0AJ

£335,000

Presented to the market is this spacious two-bedroom split-level maisonette with a balcony located within Donavon House on Cable Street, E1, in the heart of the ever-popular Shadwell area. Ideally positioned for commuters, the property offers excellent connectivity to both the City and Canary Wharf.

Extending to approximately 844 sq. ft., the accommodation comprises a bright and generously proportioned reception room, opening onto a larger-than-average private terrace with impressive views towards the Canary Wharf skyline and The Shard. The property further benefits from a well-sized eat-in kitchen, a separate family bathroom, and two spacious double bedrooms arranged over two levels.

Donavon House, Cable Street enjoys a highly desirable location, just moments from the Thames Path, Shadwell Basin and King Edward Memorial Park. Residents benefit from a wide selection of local amenities, cafés, shops and restaurants within easy walking distance, while excellent transport links provide swift access across London.

- Split-level maisonette
- Gas central heating
- Balcony
- Separate kitchen
- Cloakroom
- Chain free

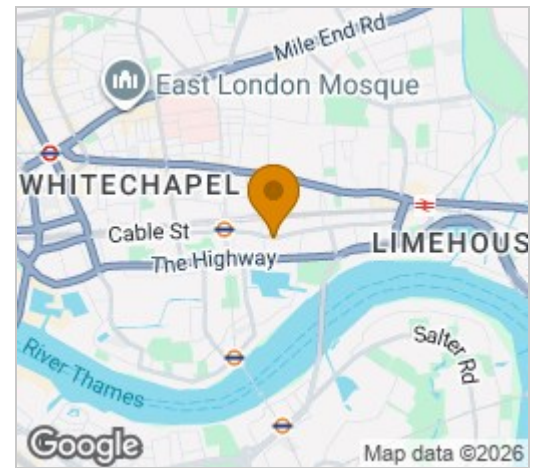
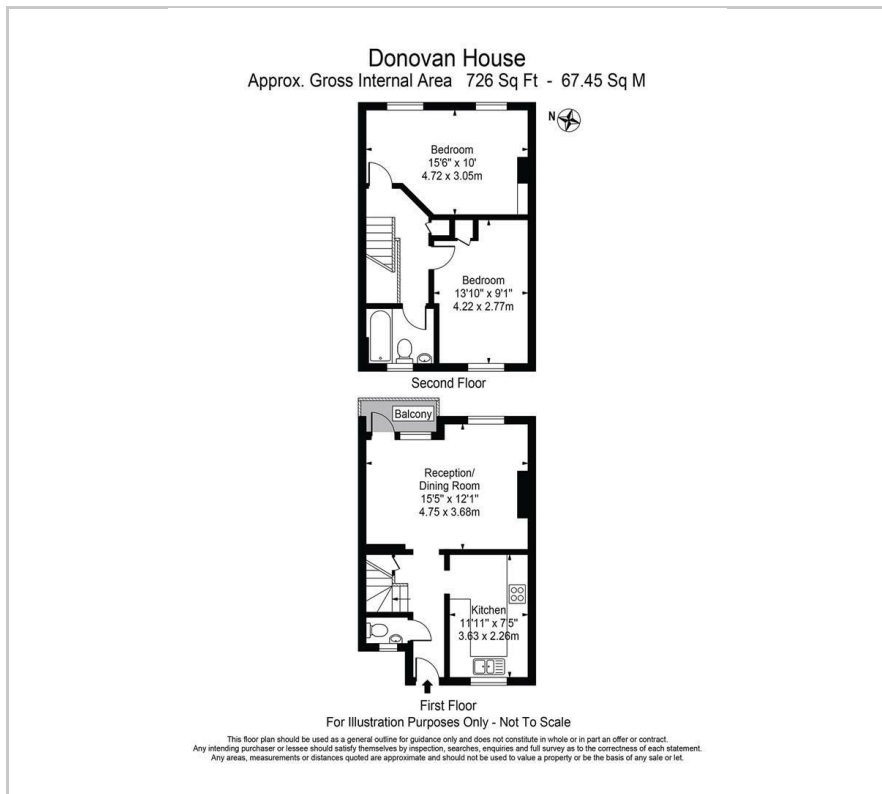
Viewing

Please contact our Limehouse Sales Office on 02077911777 if you wish to arrange a viewing appointment for this property or require further information.

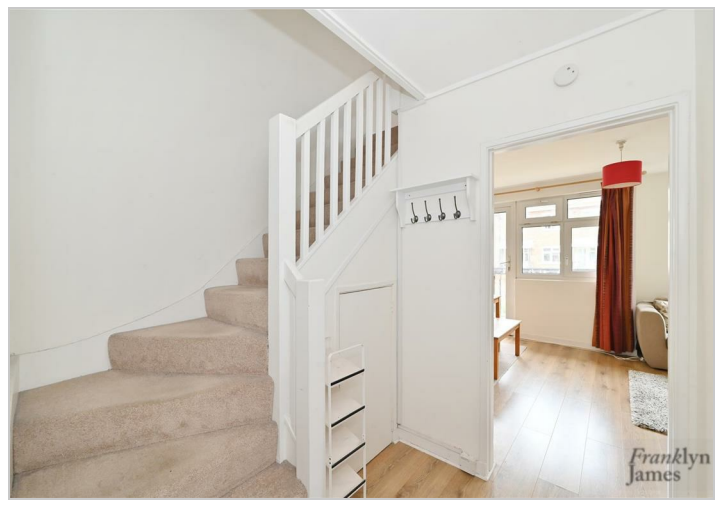
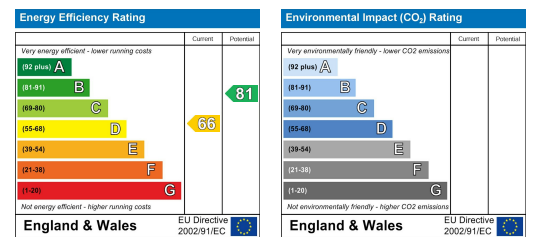


Floor Plan

Area Map



Energy Efficiency Graph



These particulars, whilst believed to be accurate are set out as a general outline only for guidance and do not constitute any part of an offer or contract. Intending purchasers should not rely on them as statements of representation of fact, but must satisfy themselves by inspection or otherwise as to their accuracy. No person in this firm's employment has the authority to make or give any representation or warranty in respect of the property.