



The Lowlands, Stockton-on-Teme, Worcestershire

G HERBERT  
BANKS

EST. 1898

The Lowlands  
Lowe Green  
Stockton-on-Teme,  
Worcestershire,  
WR6 6UA

A very appealing detached family home in the glorious Teme Valley.

Elevated setting with exceptional views.

Generous and versatile double glazed accommodation.

- Reception hall, lounge, dining room, sitting room, breakfast kitchen, utility room, four bedrooms, ensuite dressing room and shower room, cloakroom, family bathroom
- Vehicle hardstanding, good sized lawned gardens with cellar and small paddock
- In all 1,998sqft

### Situation

The Lowlands is situated between the sought after hamlet of Stockton-on-Teme and the village of Eardiston.

A range of local services are available in the nearby villages of Great Witley, Lindridge and Abberley including primary schools, post offices/stores, garages and in Abberley a public house. Great Witley also has a doctors' surgery. Stockton is in the catchment area of the highly regarded Chantry Senior School in Martley.

There is a small complex of local shops and amenities in Stanford Bridge. These include the Mill Farm Country Retail with a farm shop, hairdressers, café, garden centre, gift shop and leisure studios. There is also the Bell at Pensax which is a short distance away.

The market town of Tenbury Wells is 8 miles, Ludlow is 17 miles and Worcester is 15 miles. Worcester and Kidderminster have direct rail links to London and Birmingham.

There is M5 motorway access via junctions 5 at Wychbold and 6 & 7 of the north and south of Worcester.

### Description

Set in an elevated position with far-reaching views across the stunning Teme Valley, this beautifully presented detached family home offers a rare combination of space, light, and a truly idyllic setting.

From the moment you arrive, the sense of openness is unmistakable. The house is perfectly positioned to capture breathtaking sunsets, with large windows and generous double-glazed openings drawing in natural light throughout the day and framing the surrounding countryside beyond.

Inside, the property offers exceptionally spacious and versatile accommodation, ideal for modern family life. A series of well-proportioned reception rooms provide flexibility for both relaxed everyday living and entertaining, including a substantial lounge with feature fireplace, a separate dining room, and additional sitting areas that create a wonderful flow through the home. The kitchen and breakfast space form the heart of the house—practical yet inviting, and perfectly suited to busy family routines. The ground floor also benefits from a well-appointed principal bedroom suite with dressing area and en suite, offering convenience and flexibility for a range of lifestyles.

Upstairs, two delightful loft bedrooms provide a peaceful retreat, each enjoying elevated views across the gardens and out over the Teme Valley. Filled with natural light, these rooms offer a wonderful sense of calm and privacy—ideal for children, guests, or inspiring work-from-home spaces.

### Outside

Outside, the property truly comes into its own. Set within a generous wrap-around plot, the gardens offer a wonderful blend of lawn, mature planting, and seating areas—perfect for children to play, for hosting summer gatherings, or simply for unwinding while taking in the panoramic outlook. As evening falls, the setting sun provides a spectacular backdrop, making this a home that feels special at every time of day.

With ample parking, additional outbuildings, and a small paddock, this is a home that offers both

practicality and lifestyle in equal measure.

Combining countryside tranquillity with excellent access to nearby towns and amenities, this is a

superb opportunity to acquire a light-filled, spacious family home in a truly outstanding location.

### GENERAL INFORMATION

#### Energy Performance

Current Rating: 40E  
Potential Rating: 70C  
Carried out: 23<sup>rd</sup> August 2024

#### Services

Mains electricity and water. Private drainage. Oil fired central heating.

Please note the property was rewired in 2024.

#### Local Authority

Malvern Hills District Council

#### Fixtures and Fittings

Any items of this nature not specifically mentioned within the confines of these sales particulars are to be excluded from the sale.

#### Viewing

Via the Sole Agent's Great Witley Office  
Tel: 01299 896968

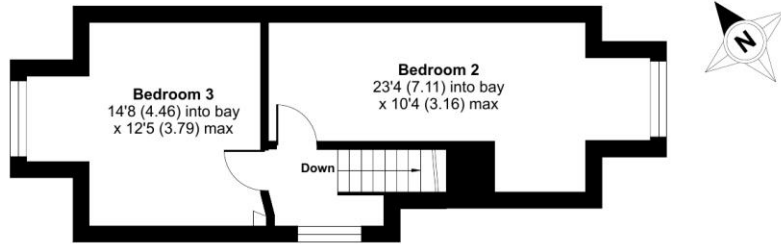
#### Directions

What3words ///tripled.apartment.rocked

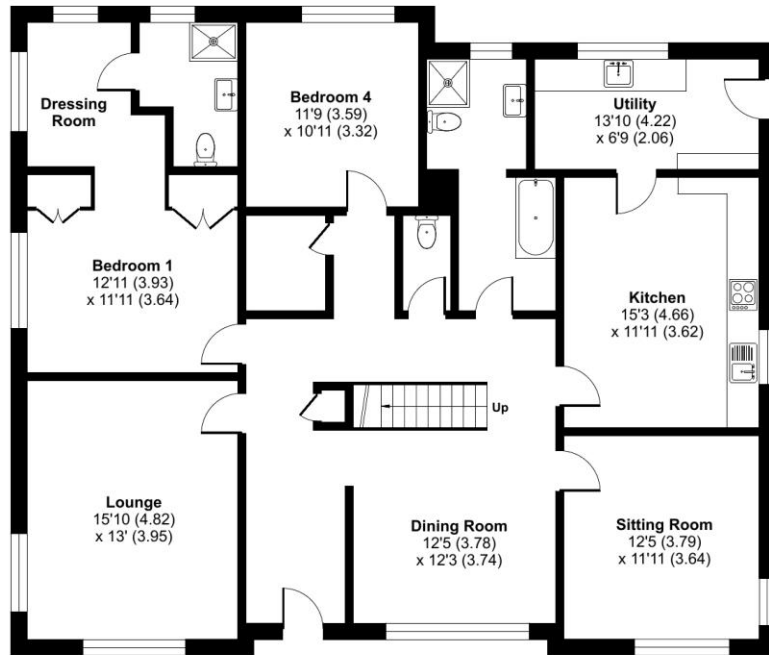
# Low Green, Worcester, WR6

Approximate Area = 2014 sq ft / 187.1 sq m

For identification only - Not to scale



FIRST FLOOR



GROUND FLOOR

Floor plan produced in accordance with RICS Property Measurement 2nd Edition, Incorporating International Property Measurement Standards (IPMS2 Residential). © nichecom 2026. Produced for G Herbert Banks LLP. REF: 1434761

Score	Energy rating	Current	Potential
92+	A		
81-91	B		
69-80	C		70 C
55-68	D		
39-54	E	40 E	
21-38	F		
1-20	G		

### MONEY LAUNDERING, TERRORIST FINANCING AND TRANSFER OF FUNDS (INFORMATION ON THE PAYER) REGULATIONS 2017

In order for us to legally comply with these regulations, we are obliged to obtain satisfactory evidence of identity and the source of funds before a sale can be reported. The checks will be carried out through CREDAS, and a non-refundable charge to each buyer (to include a private lender of funds) of £48 (inclusive of VAT) will be charged.

# G HERBERT BANKS

EST. 1898

01299 896 968  
[info@gherbertbanks.co.uk](mailto:info@gherbertbanks.co.uk)  
[www.gherbertbanks.co.uk](http://www.gherbertbanks.co.uk)

The Estate Office, Hill House  
 Great Witley, Worcestershire WR6 6JB



AGENTS NOTE The Agents would stress that these particulars have been written as a guide to the prospective purchaser and that measurements are approximate. If a prospective purchaser requires clarification on any point mentioned within these particulars they are asked to contact the Agents. The property is sold with all faults and defects, whether of condition or otherwise and neither the Vendor nor the Agents of the Vendor, are responsible for any such faults or defects or for any statements contained in the general remarks, summaries or particulars of sale of the property prepared by the said Agents. The purchaser shall be deemed to acknowledge that he has not entered into this contract in reliance on any of the said statements, that he has satisfied himself as to the correctness of each of the statements by inspection or otherwise and that no warranty or representation has been made by the Vendor or the said Agents in relation to, or in conjunction with, the property. The plan and quantities are based on the last Ordnance Survey sheets as revised by the Agents. Where fields or enclosures have been divided, the areas have been estimated by the Agents and the quantities are believed to be correct and shall be so accepted by the purchasers. G Herbert Banks LLP is a limited liability partnership registered in England and Wales with registered No. OC344076. G Herbert Banks LLP is a member of The Property Ombudsman.

