



Lyttelton Road, Hampstead Garden Suburb, N2  
Leasehold  
£595,000



800 Finchley Road, Hampstead Garden Suburb, London, NW11 7TJ  
020 8458 5000  
sales@litchfields.com  
www.litchfields.com

Offices also in Highgate

A well presented and well appointed flat set well back from the road moments from the excellent local shops, cafes and bus routes of The Market Place as well as a short walk to East Finchley Underground. Comprising entrance hall, reception room with bay window to the front, luxury fitted kitchen with door onto garden, master bedroom with patio doors onto large private garden and patio area, further double fitted bedroom to the front, family bathroom. The property has the added benefit of a private rear garden. Viewing of this chain free property is highly recommended.



3



1



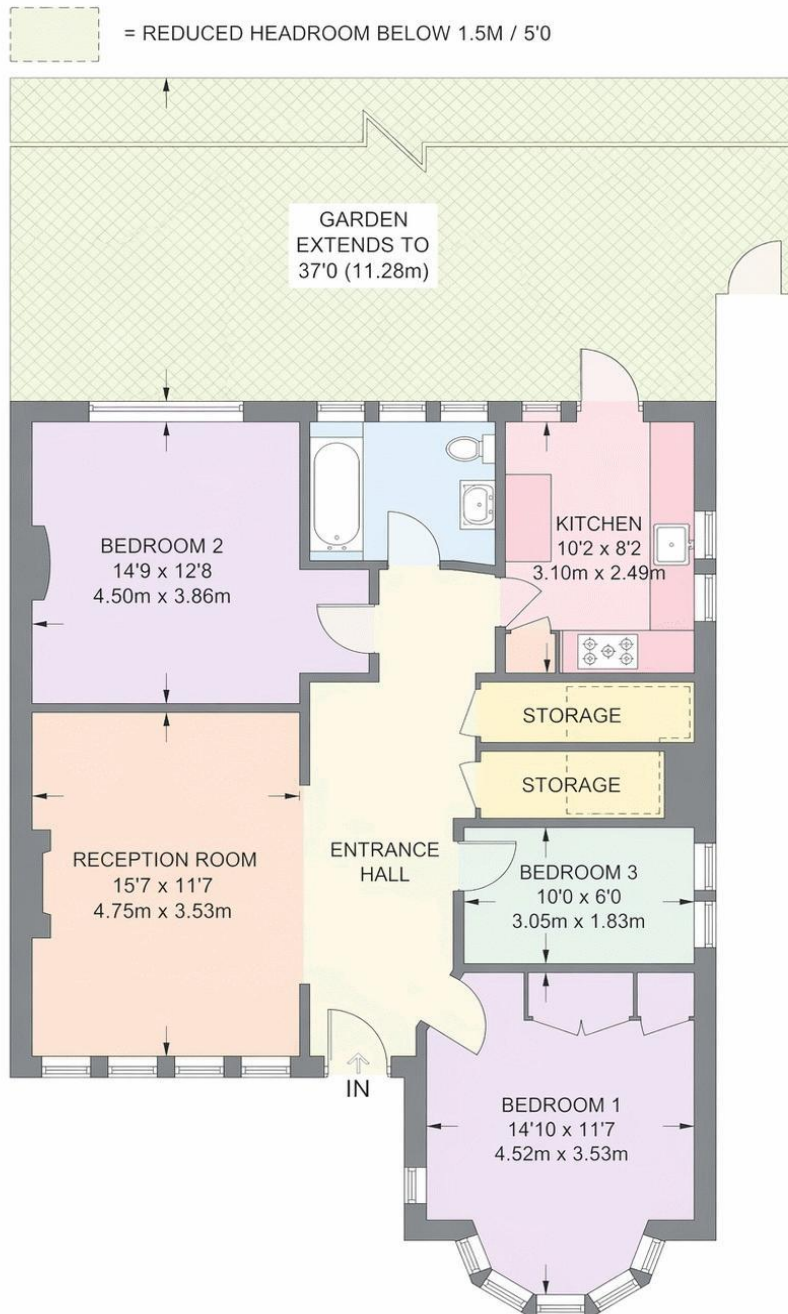
1

**EPC**

D



3 Bed Ground floor Maisonette | Reception | Modern fitted kitchen | Bathroom | Lovely rear garden with patio area | 2 storage cupboards | EPC=D



**GROUND FLOOR**

**APPROXIMATE GROSS INTERNAL AREA  
943 SQ FT / 87.6 SQ M**

This plan has been drawn for illustrative and identification purposes only.