



Church Street, Lenton
£665 pcm | £153pw Including Bills





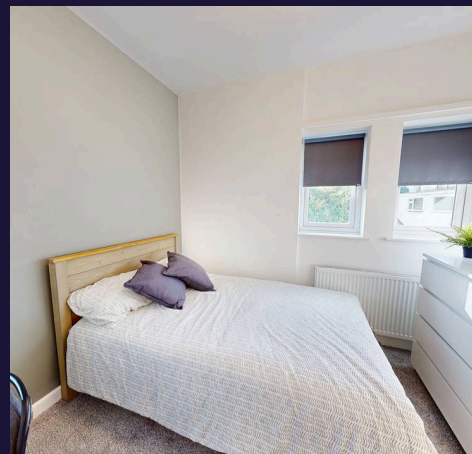
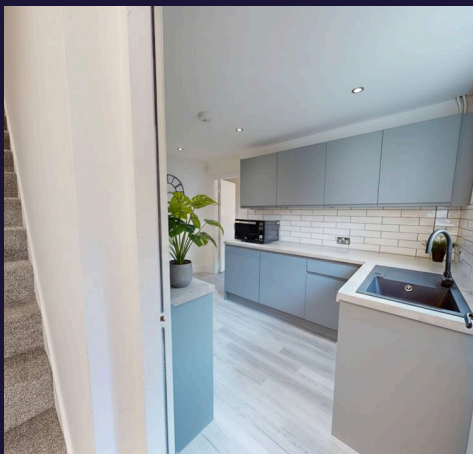
Church Street

Lenton, Nottingham

This spacious recently refurbished six bedroom student property with two shower rooms is ideally located in the heart of Lenton, one of Nottingham's most popular and well-established student areas. Perfectly suited for students studying at either the University of Nottingham or Nottingham Trent University, this property offers comfortable, sociable living in a highly convenient location.

Living here, you will benefit from excellent access to the University of Nottingham campus and Queen's Medical Centre, making it particularly ideal for medical and healthcare students. You will also have great public transport links nearby, including the tram, allowing you to travel easily to Nottingham City Centre and Nottingham Train Station.

The property has been refurbished to a high standard with contemporary interiors and furnishings making it a stylish setting to enjoy student life in Nottingham! The bedrooms are ready for you to unpack into your wardrobe, bed, desk with chair and bedside table all provided, the kitchen is fully equipped with appliances and the living room is ready for you to lounge and dine!



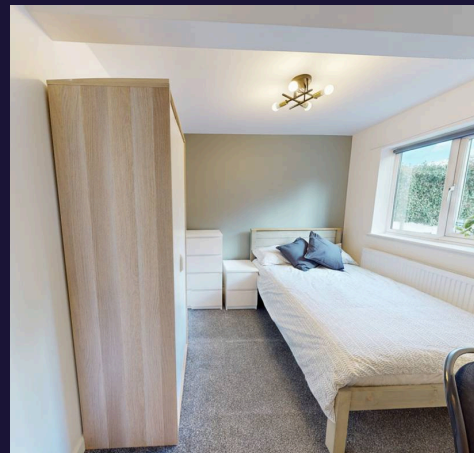
Church Street

Lenton, Nottingham

With Castle Marina Retail Park just a short distance away, you will have easy access to supermarkets, shops, gyms and a range of restaurants. You will also find a variety of local cafés, takeaways and convenience stores within walking distance, meaning everything you need is close by. It also boasts off street parking for up to two cars!

This property gives you the opportunity to enjoy student living in a dynamic, well-connected and sought-after location.

Get in touch to arrange your viewing today!





Church Street

Lenton, Nottingham

| Student Home for 2026/27 | £153pppw | No Holding Deposit | Bills Included | Recently Refurbished | Flexible Dates | Two Parking Spaces | Walking Distance to Campus & QMC | Great for both Uon & NTU | Council Tax band: A

Tenure: Freehold

EPC Energy Efficiency Rating: C

EPC Environmental Impact Rating: C

- Student Home for 2026/27
- Recently Refurbished Stylish Home
- Walking Distance to Campus & QMC
- Walking Distance to Tram Network
- Homely & Contemporary Interiors
- Flexible Dates
- Sought-After Student Location
- £153pppw Including Bills

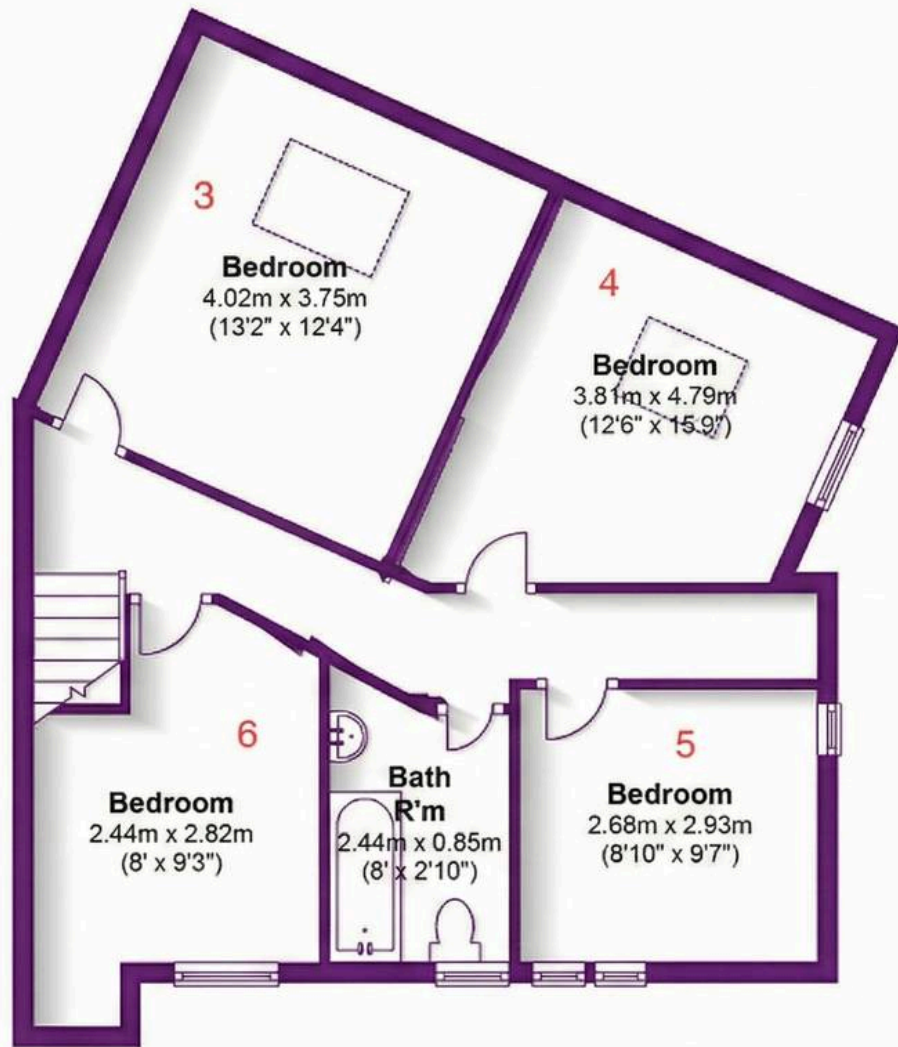
**Bills**

Bills included are Gas, Water, Electricity, and Internet. The Tenant is responsible for arranging the supply and payment of all other bills and utilities, if applicable.



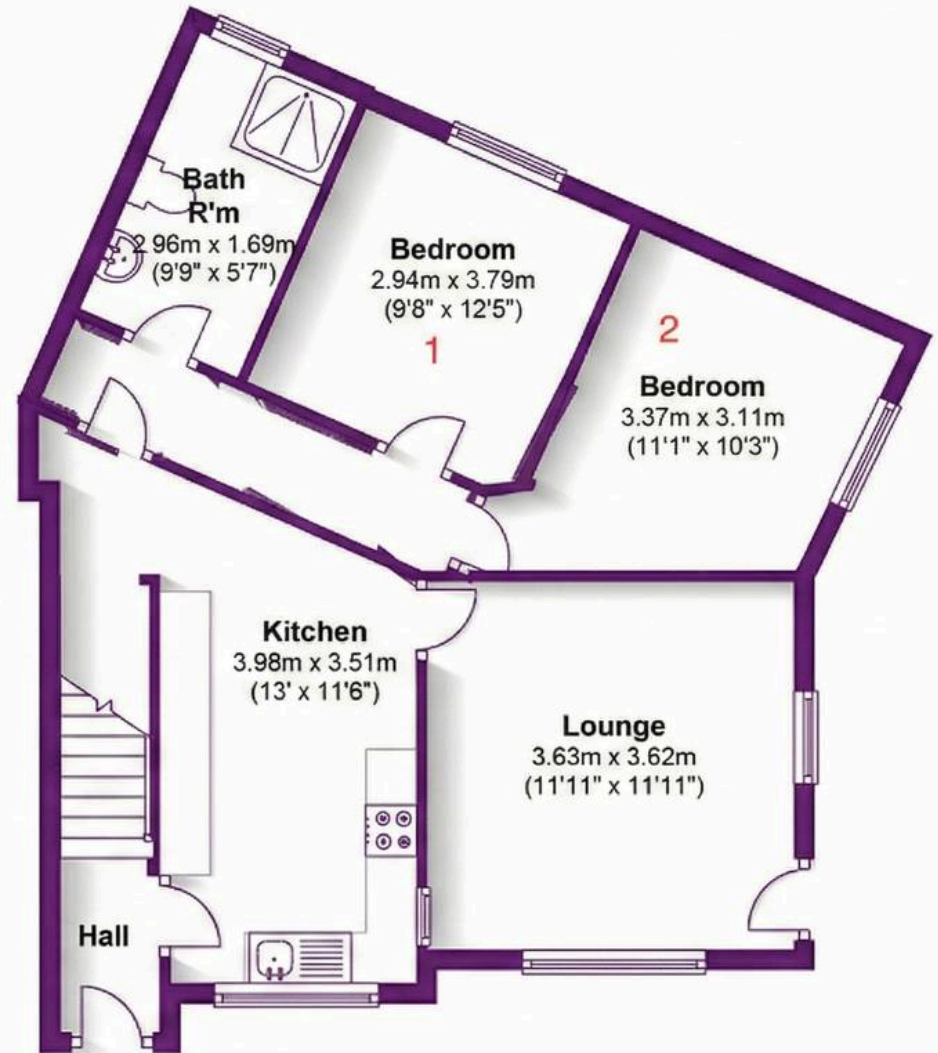
First Floor

Approx. 59.9 sq. metres (644.6 sq. feet)



Ground Floor

Approx. 57.8 sq. metres (621.6 sq. feet)



Total area: approx. 117.6 sq. metres (1266.2 sq. feet)



Comfort Estates

Comfort Estates, 47 Derby Road - NG1 5AW

0115 9338997 • info@comfortestates.co.uk • www.comfortestates.co.uk