



Sumatra Road, NW6

£850,000

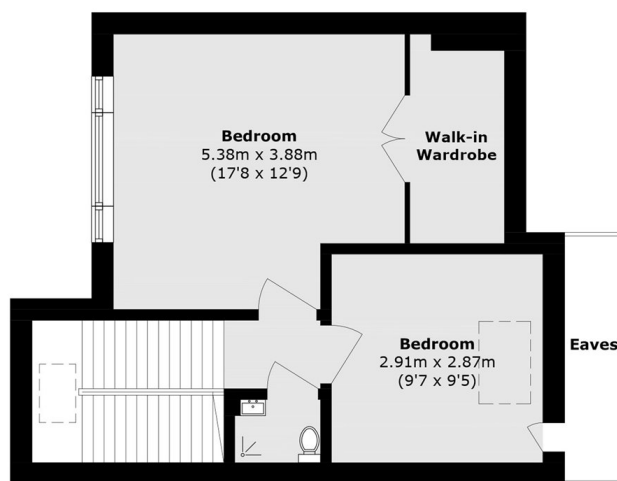
An impressive first and second floor split-level conversion offering two double bedrooms and a open-plan kitchen/reception room with high ceilings and a beautiful bay window. Further benefits include a private garden with a versatile garden office, walk-in closet from principle bedroom, share of freehold and no onward chain.

Ideally located on sought-after Sumatra Road in the heart of West Hampstead, the property is moments from the shops, cafés and restaurants of West End Lane, with excellent transport links via the Jubilee Line, Thameslink and Overground.

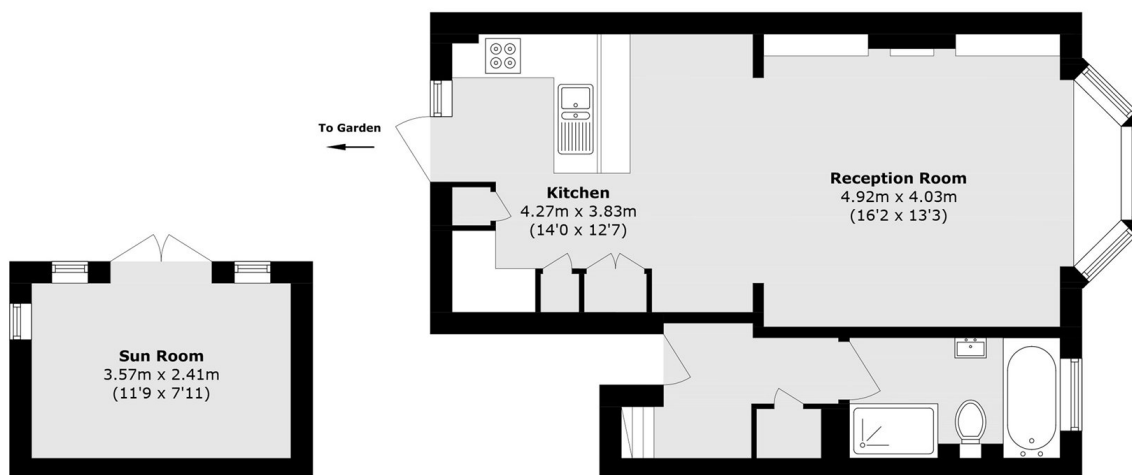
Features

- Two Bedrooms
- Two Bathrooms
- Share Of Freehold
- Garden And Sun Room
- Victorian Conversion
- No Onward Chain

Sumatra Road, London, NW6



Second Floor



Ground Floor

First Floor

Total area (approx.): 80.7 sq. m (868.7 sq. ft)
Outbuilding area (approx.): 8.6 sq. m (92.6 sq. ft)
(Excluding Eaves)