



## Montpelier Avenue, W5

### £385,000

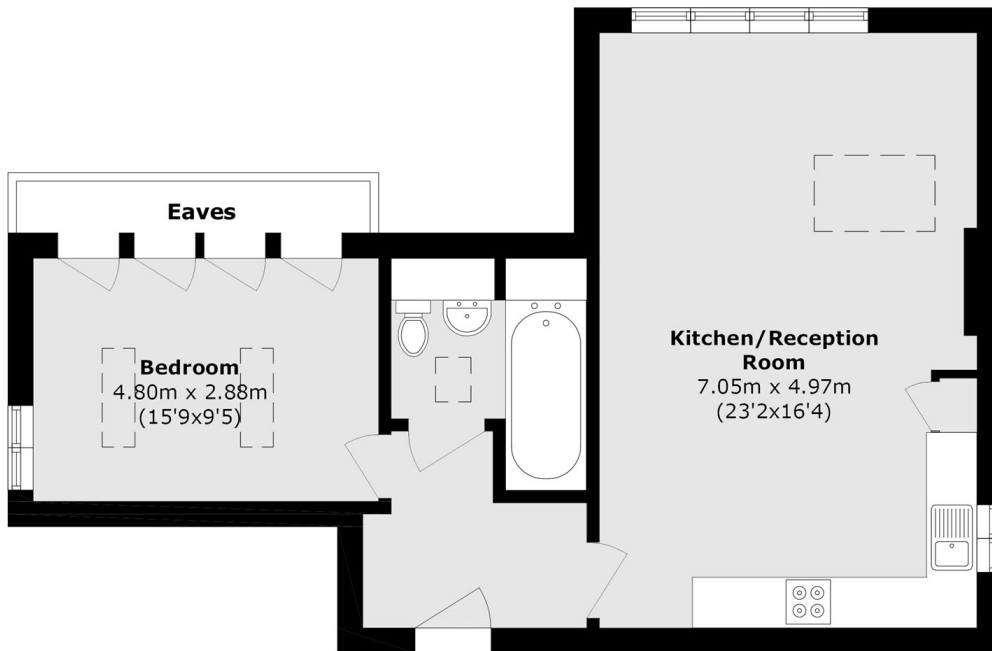
Positioned on the top floor, this one bedroom apartment offers bright, well-proportioned living space, complemented by attractive period features and elegant oak wood flooring throughout. The property comprises a generous double bedroom, a comfortable reception room, and access to a well-maintained communal garden, providing an enjoyable outdoor space for residents.

Montpelier Avenue is a sought-after road in Ealing, close to the shops and restaurants of Ealing Broadway and excellent transport links including the Elizabeth, Central and District lines. Green spaces such as Ealing Common and Walpole Park are also nearby.

### Features

- Top Floor
- Generous Living Room
- Period Conversion
- Communal Garden
- 985 Year Lease
- Prime Location

# Montpelier Avenue, London, W5



Total area (approx.): 57.5 sq. m (619.0 sq. ft)

(Excluding Eaves)