



Let **UK** Home

1 Bedrooms

Flat

Located in London

£3,293 Per Month



info@letukhome.co.uk

<https://www.letukhome.co.uk/>

01795 358 886



4B Merchant Square East London

W2 1AN



Let UK Home are excited to offer this superb interior designed one bedroom apartment set within the heart of the Paddington Basin and close to the popular West End Quay.

The apartment is situated on the Third floor of this prestigious building which features a concierge service, lift service, and secure underground parking.

The stunning apartment comprises spacious reception room with superb views of the South side of Grand Union Canal, a fully fitted modern open plan kitchen, one bedroom and 1 bathroom. The apartment is available furnished or unfurnished.

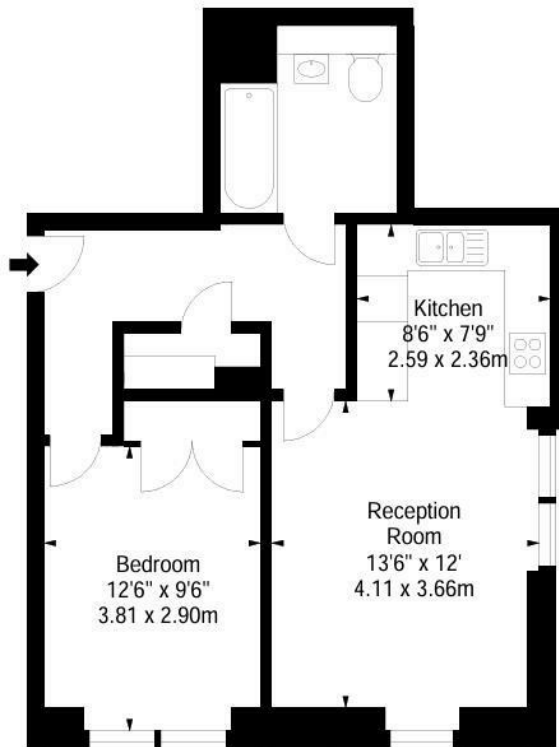
The apartment offers easy access to a lot of transport links such as Paddington Railway Station and Underground Station (Elizabeth line, Bakerloo, Hammersmith & City, Circle, District lines and Heathrow Express) Edgware Road Underground Station (Circle, District and Bakerloo lines). A40 is just a short drive away, while the bus stop on nearby Edgware Road are within walking distance.

4B Merchant Square East London

£3,293 Per Month

- 3rd Floor
- Spacious and bright
- Free underground car park
- Concierge service
- Lifts
- Water views
- 24 hour maintenance service
- Dedicated building manager
- Available furnished or unfurnished
- EPC Rating: B





Let **UK** Home

3F 2 Eastbourne Terrace
 Paddington
 London
 W2 6LG

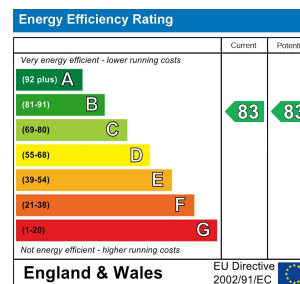
01795 358 886

info@letukhome.co.uk

Council Tax Band: D

Local Authority:

Agents Note: Whilst every care has been taken to prepare these particulars, they are for guidance purposes only. All measurements are approximate and are for general guidance purposes only and whilst every care has been taken to ensure their accuracy, they should not be relied upon and potential buyers/tenants are advised to recheck the measurements.



<https://www.letukhome.co.uk/>