



SOUTHCROFT ROAD, SW16

£850,000

- Double Reception Room
- Extended Kitchen / Diner
- Landscaped Rear Garden
- 4 Bedrooms, 2 Bathrooms
- No Onward Chain
- Sought After Location





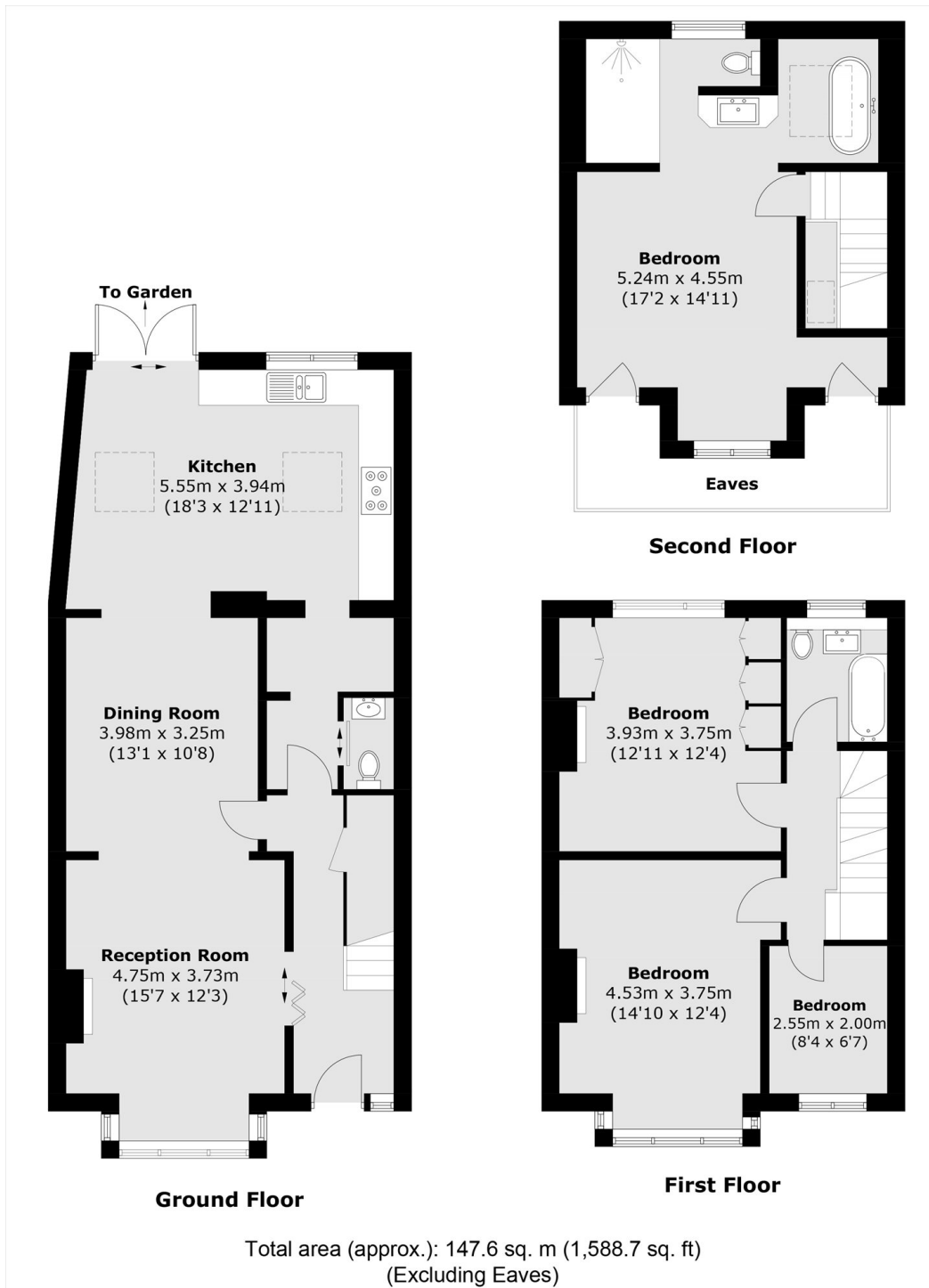
## ABOUT THE HOME

A spacious and well presented 4 bedroom, 2 bathroom period terrace house. Which has been extended to offer nearly 1600sqft and sold with the added benefit of no onward chain. The internal layout comprises; a generous double reception room that leads through to the extended, open plan kitchen / diner. French doors take you out to a recently landscaped, private rear garden. Returning inside to the first floor there are 2 large bedrooms, a well appointed family bathroom and single bedroom, perfect for a home office or nursery room. The loft room has been modernised to now offer the principal bedroom suite with opponent en-suite bathroom that is architecturally designed to provide a sense of space, flooded with natural light. As well as easy access to eaves storage.

Southcroft Road is a popular spinal road, nestled at the back of the Furzedown. With excellent transport links to the city and within close proximity to highly sought after schools.






**JACKSONS TOOTING**

3 Upper Tooting Road, London,  
SW17 7TS  
Sales: 020 8487 3175  
Lettings: 020 8487 3176

Energy Rating: We aim to make our particulars both accurate and reliable. However they are not guaranteed; nor do they form part of an offer or contract. If you require clarification on any points then please contact us, especially if you're traveling some distance to view. Please note that appliances and heating systems have not been tested and therefore no warranties can be given as to their good working order.