



Hall Street
Alfreton



Property Description

Discover the potential of this substantial five-bedroom semi-detached home, perfectly positioned on the popular Hall Street in Alfreton. Offering impressive space throughout, this charming property retains a range of original features, adding character and a traditional feel.

The ground floor boasts two generously sized reception rooms, both filled with natural light and offering versatile living options for families. The kitchen sits to the rear with access to the garden, providing an excellent footprint for those wishing to update or redesign to suit modern tastes.

Across the upper floors, you'll find five well-proportioned bedrooms, making this a superb choice for larger families, multi-generational living, or buyers seeking extra room for home offices and guest accommodation. A family bathroom completes the internal accommodation.

Externally, the property benefits from a driveway providing off-street parking, along with an enclosed rear garden.

While the home offers wonderful space and character, some modernisation is required, allowing the next owner to put their own stamp on the property and create a stunning family home.

Situated close to Alfreton town centre, local amenities, transport links, and reputable schools, this is an exciting opportunity in a sought-after location.

Viewing is strongly recommended to fully appreciate the size and character!

Porch

A practical porch providing a welcoming entrance to the home, featuring a door leading into the hall. The space also includes coat-hanging facilities, offering convenient storage for outerwear and everyday essentials.

Hall

A welcoming entrance hall featuring a radiator for warmth and comfort. The standout feature is the beautiful Arts and Crafts staircase adding charm and character to this traditional home.

Lounge

A bright and inviting spacious lounge featuring a charming bay window to the front elevation, flooding the room with natural light. The focal point of the space is the open fire, complemented by an impressive feature fireplace that adds warmth and character. A radiator provides additional heating, making this a cosy and comfortable room ideal for relaxation or entertaining.

Pantry

A useful pantry featuring a window to the rear elevation, providing natural light and ventilation. Fitted with shelving, this space offers practical storage for kitchen essentials and household items. The original stone meat slab is still in situ.

Downstairs W.C

A convenient separate toilet fitted with a low-flush WC.

Dining Room

A well-proportioned dining room offering an ideal space for family meals and entertaining. French doors to the rear elevation provide plenty of natural light and open directly onto the garden, creating a lovely indoor–outdoor flow. A feature fireplace with a gas fire inset forms an attractive focal point.

Kitchen

A practical and functional kitchen fitted with a sink and electric oven and hob, offering a solid foundation for everyday cooking, a gas central heating radiator. A window to the rear elevation allows natural light to fill the space, while a door leading directly to the rear garden provides convenient outdoor access. A door leads to the spacious understairs cupboard providing further storage.

First Floor Landing

A spacious first floor landing with stairs rising to the second floor and doors leading to the first-floor accommodation. A window to the side elevation brings in natural light, creating a bright and welcoming transitional space with two large useful storage cupboards.

Bedroom One

A generously sized double bedroom featuring an original fireplace that adds a touch of period charm. A window to the rear elevation

allows natural light to fill the room. This attractive space offers a warm and inviting atmosphere, ideal as a principal or guest bedroom.

Bedroom Two

A generously sized double bedroom featuring an original fireplace that adds a touch of period charm. To double glazed windows to the front elevation allows natural light to fill the room.

Bedroom Three

A generously sized double bedroom featuring an original fireplace that adds a touch of period charm. A window to the rear elevation allows natural light to fill the room.

Bathroom

A neatly presented bathroom featuring a window to the front elevation, allowing natural light to brighten the space. Fitted with a wash hand basin and a panelled bath, the room offers a practical foundation with potential for modernisation to suit personal taste. An attractive heated towel rail.

W.C

A convenient separate toilet fitted with a low-flush WC and featuring a window, providing natural ventilation. A practical addition to the first-floor layout, offering added convenience for family living.

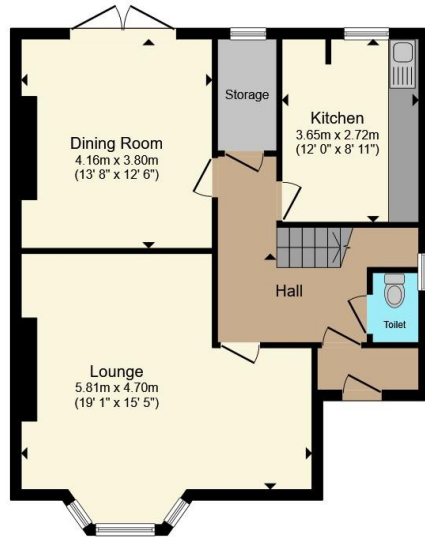
Second Floor Landing

A versatile second-floor landing offering a

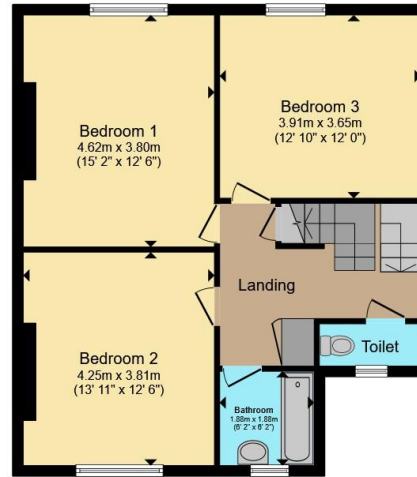




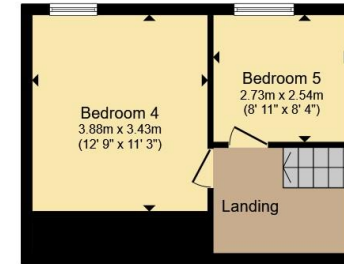




Ground Floor



First Floor



Second Floor

Total floor area 164.5 m² (1,771 sq.ft.) approx

This floor plan is for illustrative purposes only. It is not drawn to scale. Any measurements, floor areas (including any total floor area), openings and orientation are approximate. No details are guaranteed, they cannot be relied upon for any purpose and they do not form part of any agreement. No liability is taken for any error, omission or misstatement. A party must rely upon its own inspection(s). Powered by www.propertybox.io



To view this property please contact Hall & Benson on

T 01773 521771
E alfreton@hallandbenson.co.uk

22A High Street
 ALFRETON DE55 7BN

view this property online hallandbenson.co.uk/Property/ALF104302

directions to this property:

From Hall and Benson, High Street Alfreton, head towards the A61, turn left on to King Street and at the second set of traffic lights turn left onto Hall street. The home can be found on the left hand side just before the road becomes Cressy Road.

EPC Rating: D Council Tax Band: C

Tenure: Freehold



1. MONEY LAUNDERING REGULATIONS Intending purchasers will be asked to produce identification documentation at a later stage and we would ask for your co-operation in order that there will be no delay in agreeing the sale. 2. These particulars do not constitute part or all of an offer or contract. 3. The measurements indicated are supplied for guidance only and as such must be considered incorrect. Potential buyers are advised to recheck measurements before committing to any expense. 4. We have not tested any apparatus, equipment, fixtures, fittings or services and it is in the buyers interest to check the working condition of any appliances.

Hall & Benson is a trading name of Connells Residential which is registered in England and Wales under company number 1489613, Registered Office is Cumbria House, 16-20 Hockliffe Street, Leighton Buzzard, Bedfordshire, LU7 1GN. VAT Registration Number is 500 2481 05.

See all our properties at www.hallandbenson.co.uk | www.rightmove.co.uk | www.zoopla.co.uk

Property Ref: ALF104302 - 0005