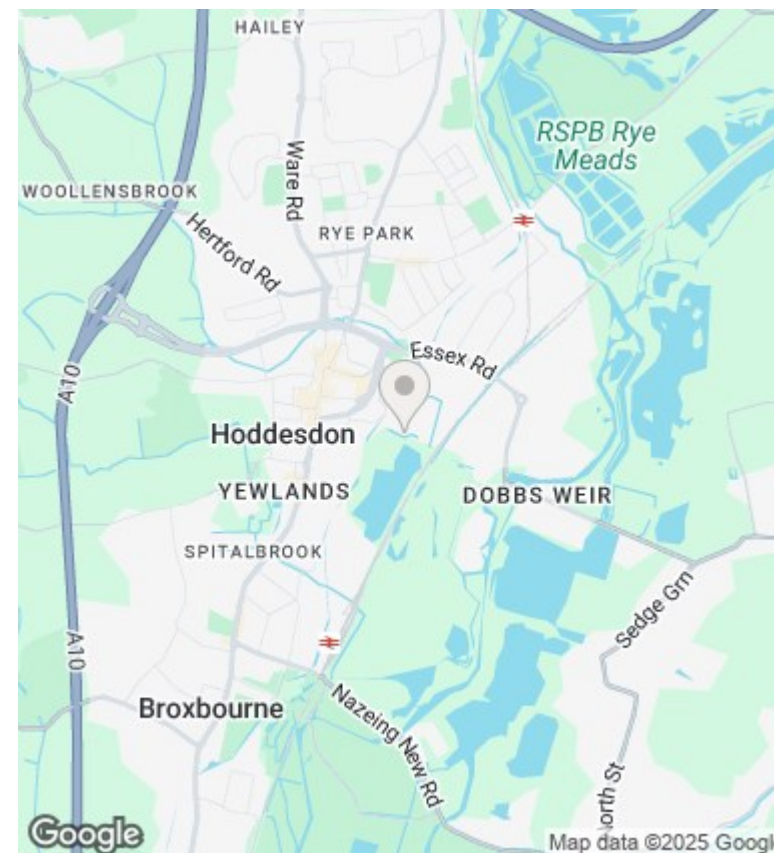
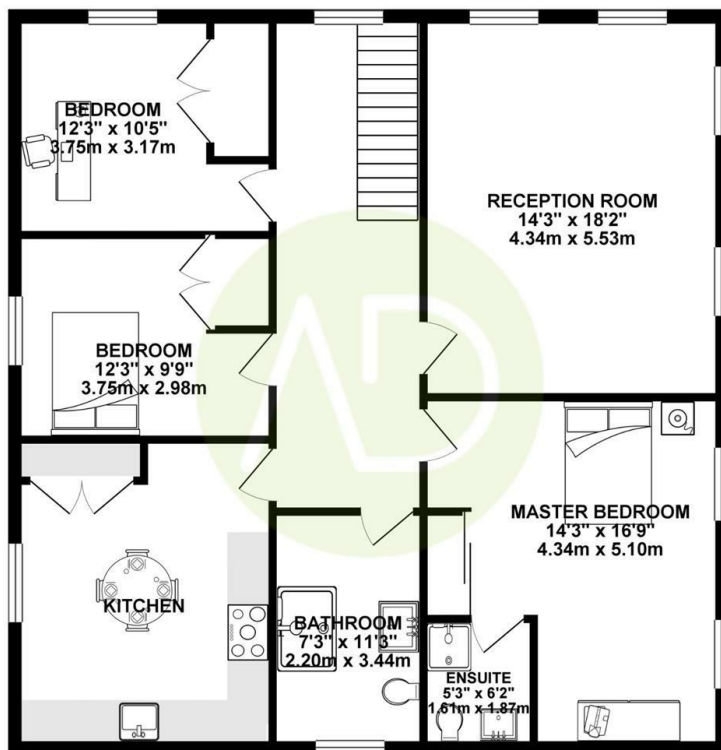




19 The Lynch, Hoddesdon, Herts, EN11 8EU

Asking Price £650,000

- Top floor apartment in a charming Georgian building
- Stunning lakeside views and access to shared balcony space
- 999-year lease (from 1991)
- Three generous double bedrooms
- Allocated parking space
- Fully refurbished to an exceptional standard throughout
- Chain free and ready for immediate occupation



Directions

Viewings

Viewings by arrangement only. Call 01992 470335 to make an appointment.

Council Tax Band

EPC Rating:

E

Energy Efficiency Rating		
	Current	Potential
Very energy efficient - lower running costs		
(92-plus) A		
(81-91) B		
(69-80) C		
(55-68) D		
(39-54) E	49	62
(21-38) F		
(1-20) G		
Not energy efficient - higher running costs		
England & Wales		EU Directive 2002/91/EC