

## Buller Park, Saltash, PL12 4LD

Guide Price £180,000

3 1 1



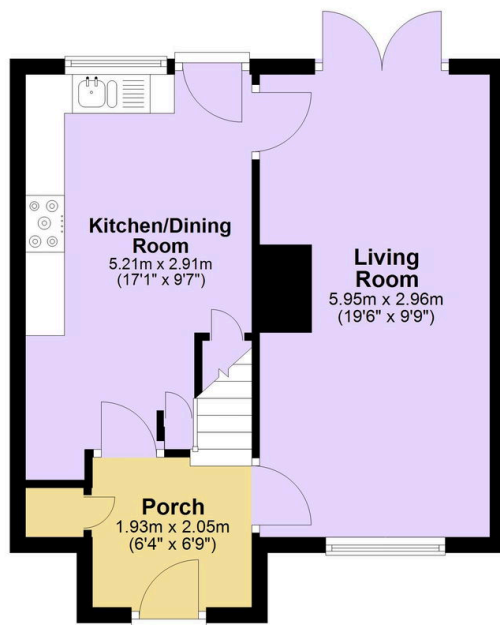
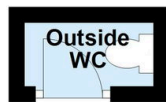
Thoughtfully extended, the property now features a wonderfully spacious entrance hall, setting the tone for the generous living space beyond. The bright and airy living room offers generous space for everyday living, while the fitted kitchen/diner offers plenty of storage and workspace. Upstairs you will find three well-proportioned bedrooms along with a modern family bathroom. Outside, the easy-to-maintain rear garden includes a handy outside WC, and offers the perfect blank canvas to transform into your own outdoor retreat. Positioned in a tucked-away location, you'll benefit from a bus stop right on your doorstep and beautiful Tincombe Park just a stone's throw away, making this a wonderfully placed home with everyday convenience close at hand.

## Key Features

- Freehold - Council Tax Band B - EPC TBC
- Three Bedroom End of Terrace Home
- Bright and Airy Living Room
- Spacious Kitchen
- Modern Bathroom
- Handy Porch Entrance Hall
- Rear Garden with Outside WC
- In Need of Modernisation
- No Onward Chain
- Quote BH0675 to Book your Viewing

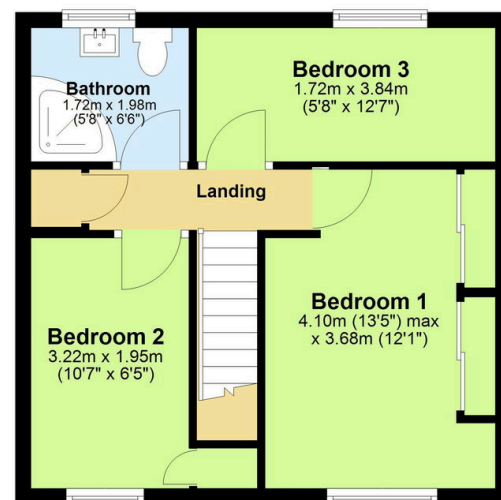
### Ground Floor

Approx. 38.7 sq. metres (416.8 sq. feet)



### First Floor

Approx. 38.0 sq. metres (408.6 sq. feet)



Total area: approx. 76.7 sq. metres (825.4 sq. feet)