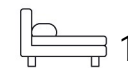




Living  
made  
better

Felixstowe Court  
North Woolwich, E16 2RR



Guide Price £200,000

# Felixstowe Court, North Woolwich, E16 2RR

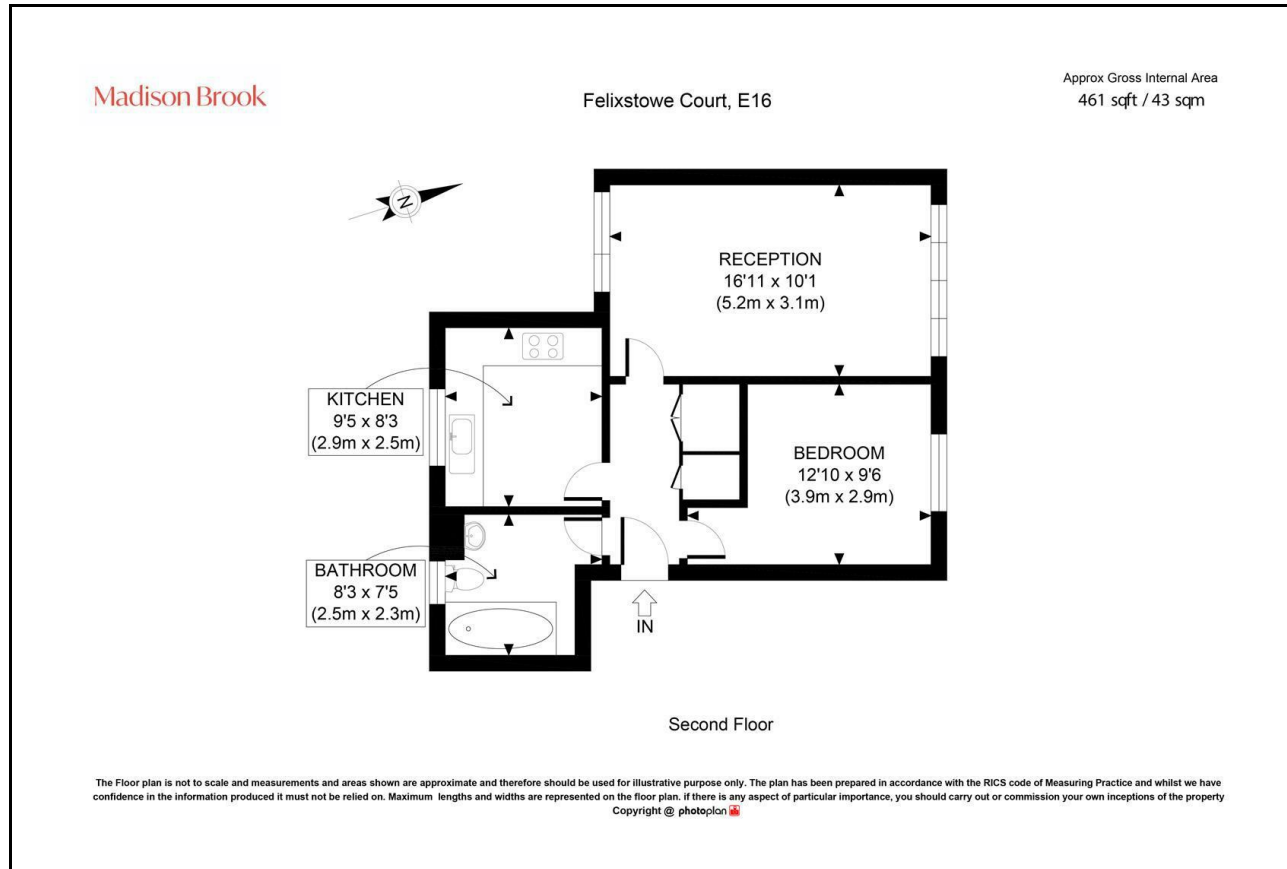
Madison Brook

## Property Summary

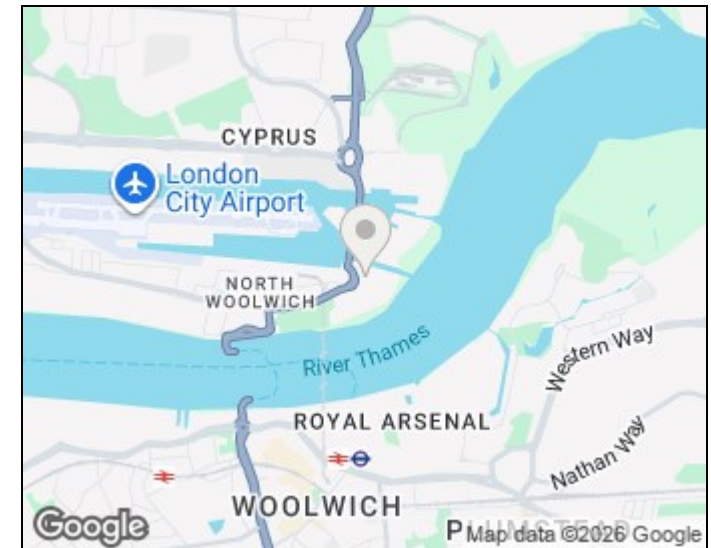
A well-presented one bedroom apartment set on the second floor of a modern riverside development, offering over 461 sq.ft. of well-proportioned living space. The property features a bright reception room, separate kitchen with integrated appliances, a spacious double bedroom and a contemporary bathroom. Ideally located close to the River Thames, with excellent transport links via King George V and Gallions Reach DLR stations and easy access to Canary Wharf.

Service Charge: £2,350.63 pa | Ground Rent: £0 pa | Lease Remaining: 171 years

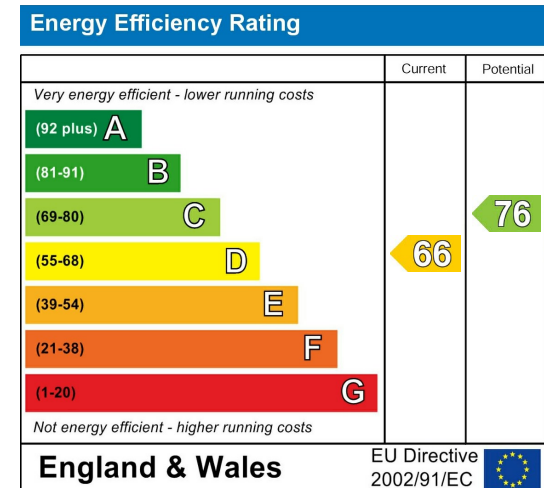
## Floorplan



## Area Map



## Energy Efficiency Graph



These particulars, whilst believed to be accurate are set out as a general outline only for guidance and do not constitute any part of an offer or contract. Intending purchasers should not rely on them as statements of representation of fact, but must satisfy themselves by inspection or otherwise as to their accuracy. No person in this firm's employment has the authority to make or give any representation or warranty in respect of the property.

Unit B 20 Western Gateway, Royal Victoria  
Dock, London, E16 1BS  
Tel: 020 3946 6000 Email:  
docklands@madisonbrook.com  
<https://madisonbrook.com/>