



Knollys Road, SW16

£500,000

 2  1  1  E

• Two Double Bedrooms

• Private Garden

• Share Of Freehold



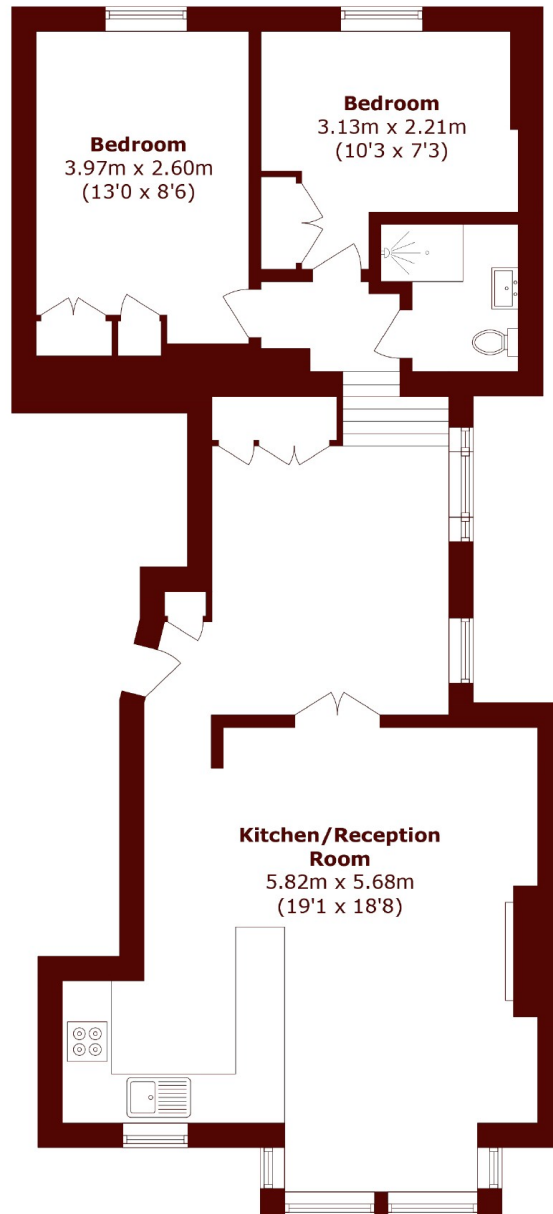


ABOUT THE PROPERTY

A beautifully presented first-floor flat finished to a high standard, offering two double bedrooms, a modern family bathroom with walk-in shower, and a spacious open-plan kitchen and living area to the front. The property also features a welcoming reception room leading through to the bedrooms, creating a well-balanced layout.

This spacious apartment is ideally located within close proximity to Streatham Hill which provides a service to London Bridge, Balham, Clapham Junction and London Victoria within seventeen minutes. The closest stations being Tulse Hill, and West Norwood mainline stations, which also provide swift access into London Victoria, London Bridge, and Clapham Junction.





Total area (approx.): 65.8 sq. m (708.2 sq. ft)

Marsh & Parsons Streatham

113-117 Streatham Hill,
London, SW2 4UG
020 8671 0171