



WOODFIELD AVENUE, SW16

£1,795,000

- Detached family home
- Five double bedrooms
- Off-street parking
- Garage
- Large landscaped garden
- Energy rating: D





ABOUT THE HOME

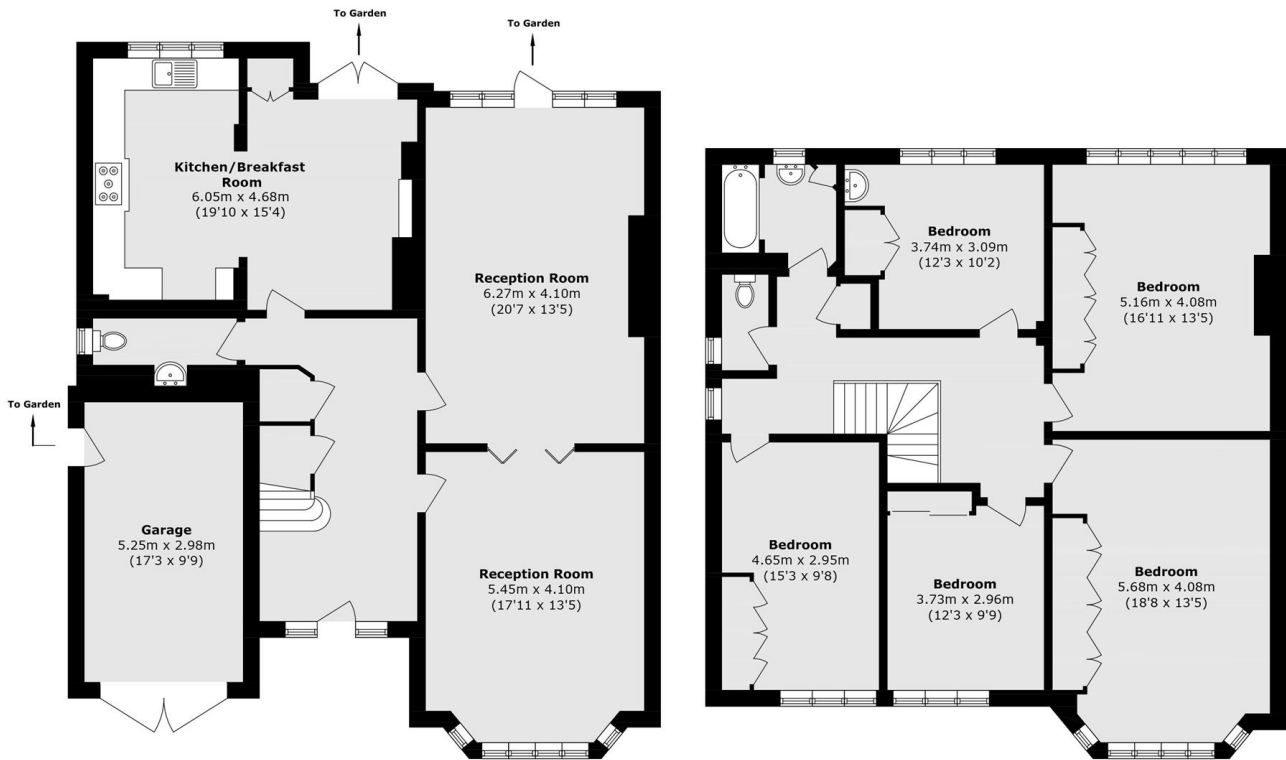
A spacious five bedroom detached family home situated on one of the most sought after roads in Streatham Hill.

The property boasts over 2000 sq ft of liveable space with off-Street Parking & room for extension potential.

The property is a two minute walk to the green open spaces of Tooting Bec Common and within easy walking distance of Balham mainline and underground station. There are several well regarded schools in the area, including Streatham and Clapham High, & Henry Cavendish Primary School. Dulwich College is a short 10 minute drive away, with Dulwich foundation coaches serving DPL, Jags & Alleyn's.







Ground Floor

First Floor

Total area (approx.): 202.6 sq. m (2180.7 sq. ft)
(Excluding Garage)

Garage area (approx.): 15.6 sq. m (167.9 sq. ft)

JACKSONS STREATHAM

1-3 De Montfort Parade,
Streatham High Road,
Sales: 020 8487 3179
Lettings: 020 8487 3180

Energy Rating: D We aim to make our particulars both accurate and reliable. However they are not guaranteed; nor do they form part of an offer or contract. If you require clarification on any points then please contact us, especially if you're traveling some distance to view. Please note that appliances and heating systems have not been tested and therefore no warranties can be given as to their good working order.