



MILLES SQUARE, SW9

£500,000

Two Bedrooms
Two Bathrooms
Modern Kitchen
Private Balcony
Private Gated Development
Energy Rating: B

@marshandparsons
marshandparsons.co.uk

MARSH &
PARSONS



ABOUT THE PROPERTY

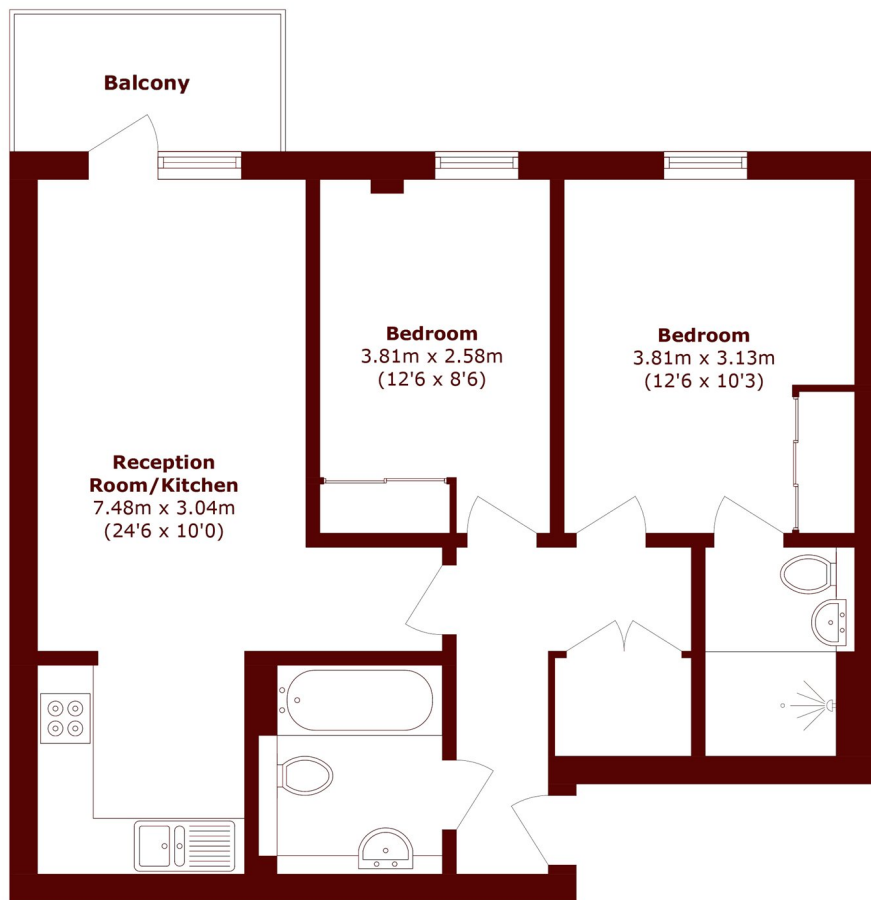
Located within a secure and gated development which benefits from a concierge, secure entry, bike storage and lift access, this modern two bedroom flat is in fantastic decorative order.

The open plan entertaining space has direct access to a private balcony which overlooks the leafy communal garden.

Located in the heart of Brixton and close to the vast array of independent shops, cafes, restaurants and bars including the popular Brixton Village with easy access to Central London via Brixton Underground (Victoria Line) and Brixton Overground Station.



STEP INSIDE MILLES SQUARE



Total area (approx.): 61.6 sq. m (663.0 sq. ft)
Balcony area (approx.): 4.5 sq. m (48.4 sq. ft)

Brixton
020 7733 4595

Energy Rating: B We aim to make our particulars both accurate and reliable. However, they are not guaranteed; nor do they form part of an offer or contract. If you require clarification on any points then please contact us, especially if you're traveling some distance to view. Please note that appliances and heating systems have not been tested and therefore no warranties can be given as to their good working order

**MARSH &
PARSONS**