



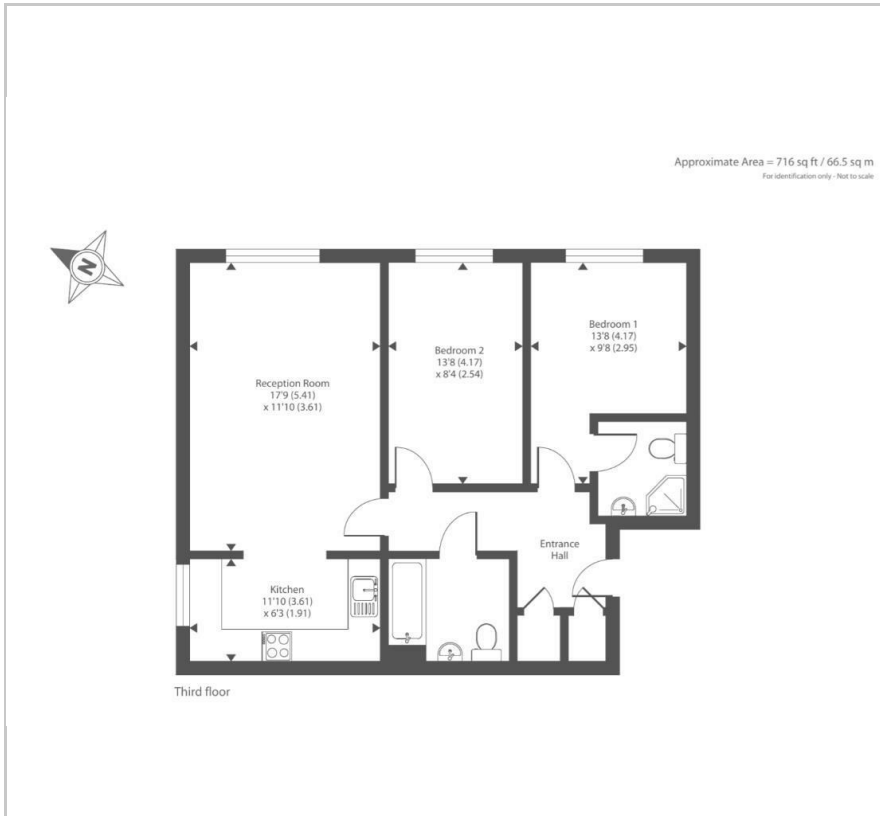
MOVE INN ESTATES
MAKING THE RIGHT MOVE



Tobermory Close
Slough, SL3 7JG
Asking Price £200,000



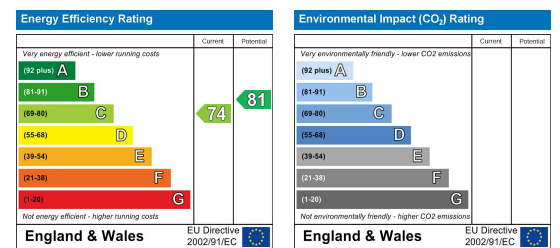
Floor Plan



Area Map



Energy Efficiency Graph



Viewing

Please contact our Move Inn Iver Office on 01753900950 if you wish to arrange a viewing appointment for this property or require further information.

- 2 Double Bedrooms
- 2 Bathrooms
- Allocated Parking
- Chain Free
- 125 years from 1st February 2006
- SC- £174.11pm
- GR- £300pa

PUBLIC NOTICE

ADDRESS 44 Tobermory Close, Slough, Berkshire, SL3 7JG

We are acting in the sale of the above property and have received an offer of £200,000

Any interested parties must submit any higher offers in writing to the selling agent before an exchange of contracts takes place

EPC Rating: C

Move Inn Estates to market with no onward chain a two bed two bath apartment located in Slough with an allocated parking space. This would make an ideal investment property or great starter property. Located near to outstanding primary and grammar schools as well as the M4 and Elizabeth Line.



These particulars, whilst believed to be accurate are set out as a general outline only for guidance and do not constitute any part of an offer or contract. Intending purchasers should not rely on them as statements of representation of fact, but must satisfy themselves by inspection or otherwise as to their accuracy. No person in this firm's employment has the authority to make or give any representation or warranty in respect of the property.