



Goshawk Road, Bishops Green, Newbury, RG20 4AH

£340,000

🛏 2 🚿 1 🚗 1

- Two double bedrooms
- Well presented
- Light and spacious
- Quiet cul-de-sac location
- Garage
- Driveway parking
- Sunny south-west facing garden
- Easy reach of the A339, A34, Newbury and Kingsclere
- Local village shop
- Open plan living/dining room



Located in at the end of a quiet cul-de-sac is a smartly presented, spacious two double bedroom home with good sized south west facing garden. Locally there is a village store and the nearby village of Ecchinswell has a church, a primary school and a traditional village public house. The light accommodation consists of entrance hall, cloakroom, smart kitchen, open plan living/dining room with access to the patio and garden, large master bedroom, further bedroom and family bathroom. Outside, the sunny rear garden is laid mainly to lawn with a patio adjacent to the rear of the house, path leading to the front of the house, garage and driveway parking to the front. Benefits include upvc double glazing and gas fired central heating.



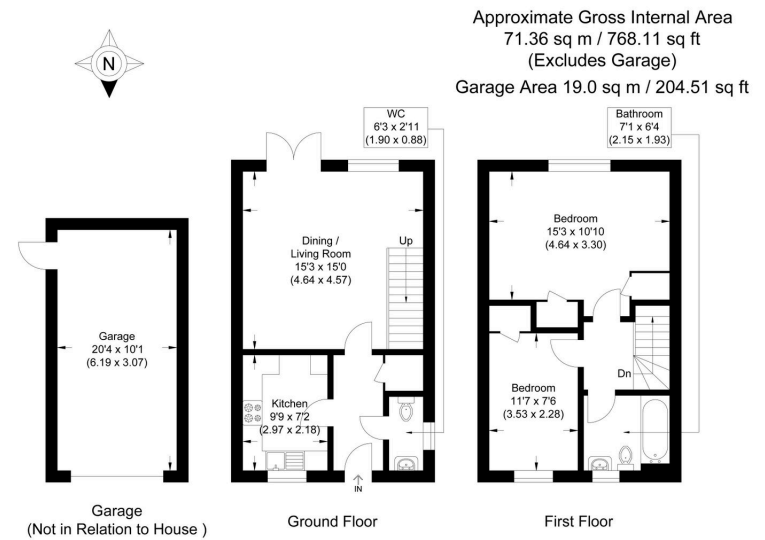
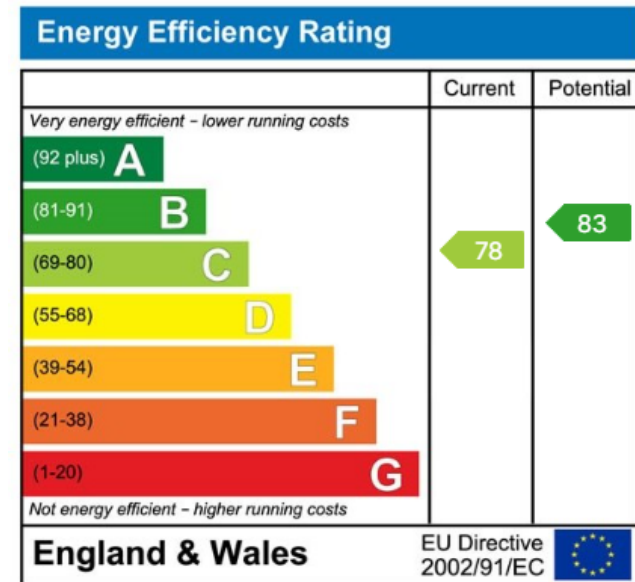


Illustration for identification purposes only, measurements are approximate, not to scale.



☎ 01635 523777 (Sales)

☎ 01635 523880 (Lettings)

🌐 www.downer.co.uk