



## Pembridge Villas, W2

£899,000

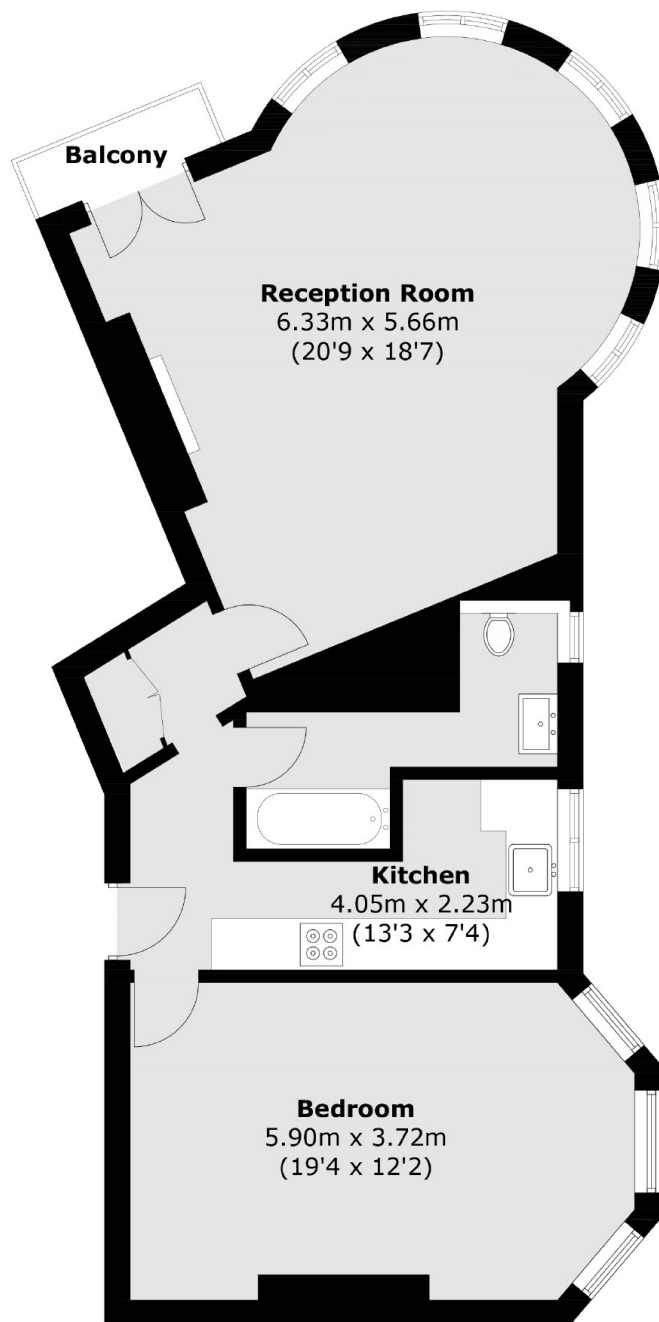
A large one bedroom flat with stunning views from the fourth floor of this elegant Victorian period building. The apartment has a spacious reception room with bay windows offering an abundance of natural light due to the triple aspect, wooden flooring and access to the balcony, a separate kitchen, and high ceilings throughout.

Ideally situated off Westbourne Grove within close proximity of all shops, restaurants and bars of both Notting Hill Gate, Paddington and the world famous Portobello Road. Notting Hill Gate (District, Circle and Central lines) is the nearest underground station providing easy access to Paddington station.

### Features

- One Bedroom
- Spacious Reception
- Separate Kitchen
- High Ceilings
- Balcony
- Lift

# Pembridge Villas, London, W2



Total area (approx.): 75.2 sq. m (809.4 sq. ft)  
Balcony area (approx.): 1.6 sq. m (17.2 sq. ft)