



## Coningham Road, W12

£2,000 Per week

A bright and spacious one double bedroom flat set on the first floor of an attractive period building. The flat has a separate, fully fitted kitchen and a large living room with period features.

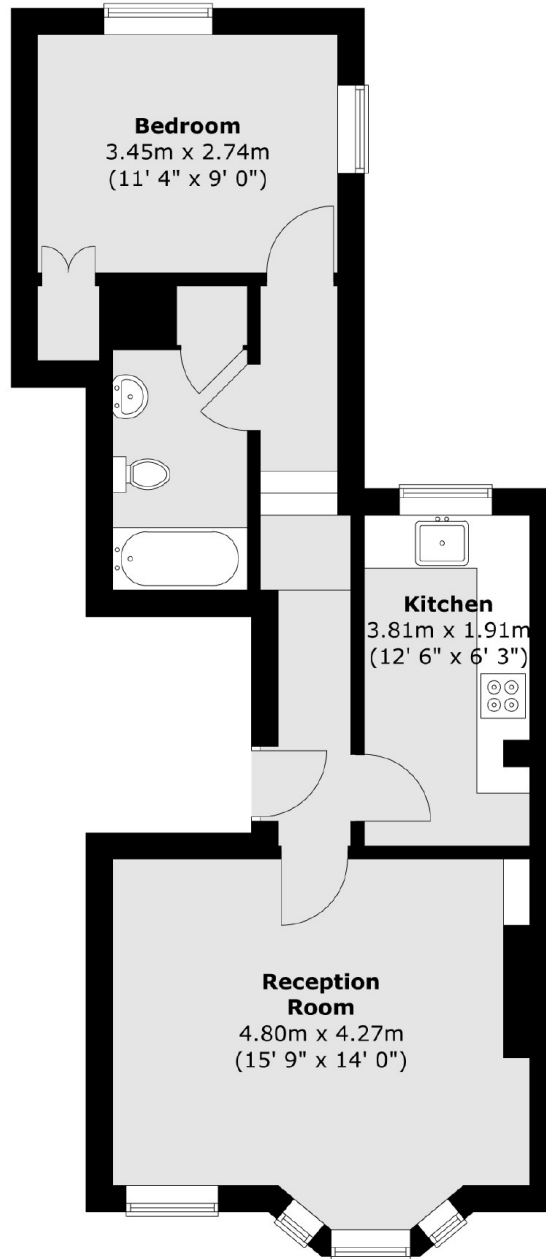
Coningham Road is moments away from Westfield Shopping Centre, Shepherds Bush Market and Shepherds Bush underground stations.

### Features

- Large One bedroom
- Modern And Spacious
- Ample Storage
- Eat-In Kitchen
- Separate Living Room
- High Ceilings

Coningham Road,  
London, W12

**First Floor**



Total area (approx.) : 49.7 sq. m (535 sq. ft)