



31, Brickendon Green, Brickendon
SG13 8PB
Price Guide £1,295,000



stevenoates.com



31 Brickendon Green, Brickendon, Herts, SG13 8PB

An exceptional 3 bedroom village home occupying an enviable location, tucked away on the village green and overlooking Brickendon Grange golf course to the rear. The stylish and recently refurbished accommodation comprises of a good size entrance hall with downstairs wc, a large open plan kitchen with dining area and living room, along with an additional dual aspect living room. On the first floor, there are currently 3 large bedrooms, a family bathroom and 2 en-suites. The large main bedroom en-suite was formerly a double bedroom and can be reinstated if required. Externally, the property is accessed via a gated driveway, good size front garden and beautiful rear gardens directly adjoining the golf course. Viewing is essential to fully appreciate this unique family home.

Centred on a traditional village green, the historic village of Brickendon has a thriving community spirit and day-to-day amenities including a church, village pub with bistro, golf course and popular primary school in nearby Bayford.

The market town of Hertford offers extensive independent and high street shopping, supermarkets, services, cafés, restaurants and recreational and leisure facilities including a bowling green, tennis courts and a leisure centre with swimming pool. Communication links are excellent: the nearby M25 and A1(M) give access to the national motorway network, Bayford station which is a short distance away, offers fast and regular services into central London and London Stansted Airport has a wide range of domestic and international flights.



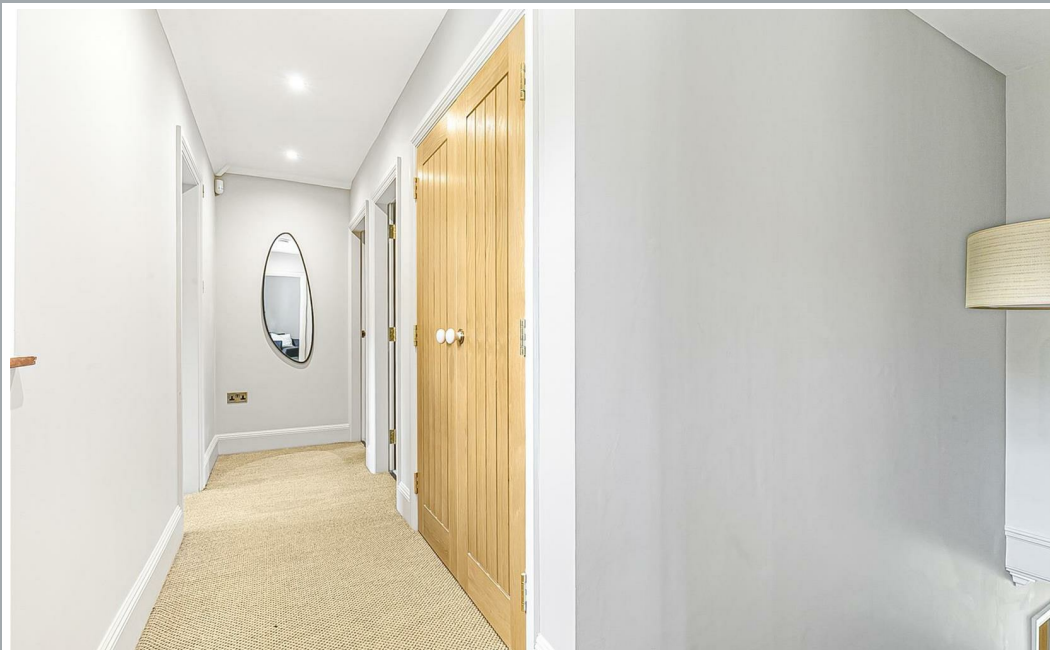
70 Fore Street, Hertford, Hertfordshire, SG14 1BY



70 Fore Street, Hertford, Hertfordshire, SG14 1BY

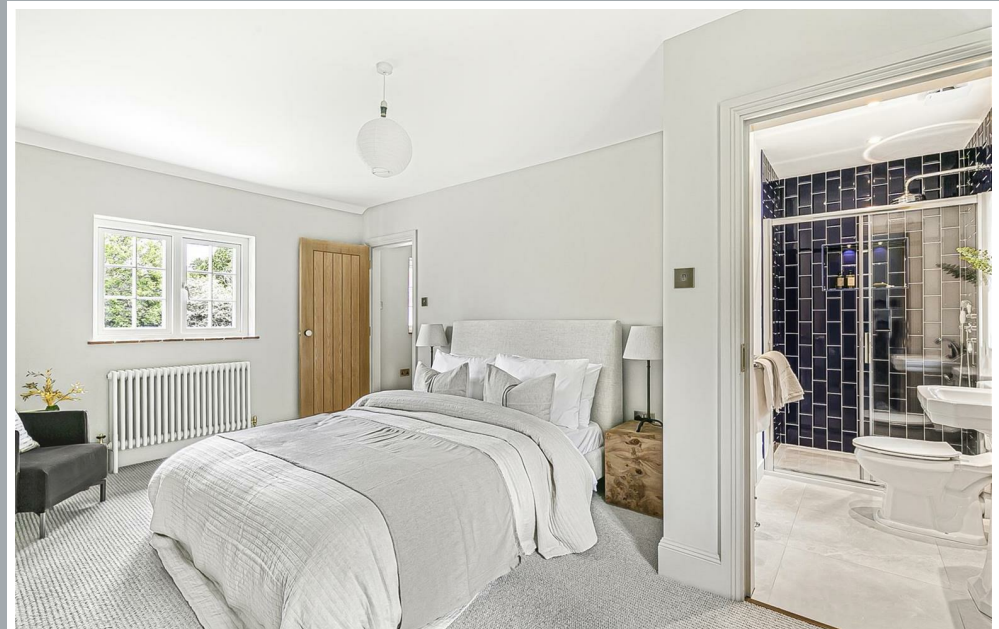


70 Fore Street, Hertford, Hertfordshire, SG14 1BY

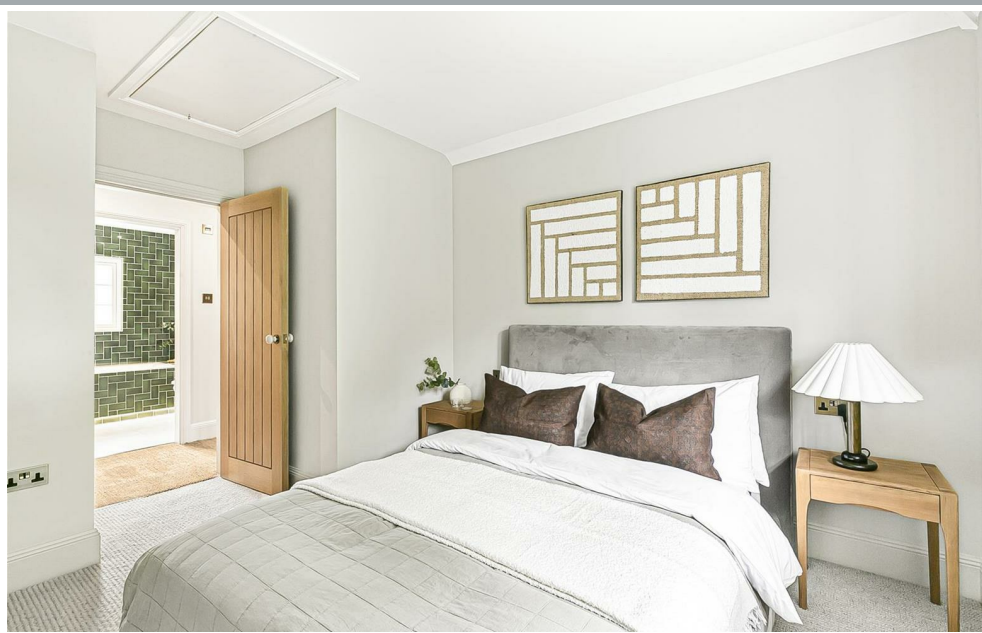
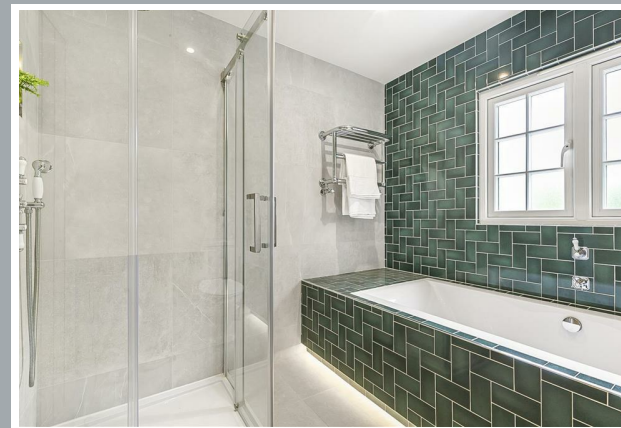




70 Fore Street, Hertford, Hertfordshire, SG14 1BY



70 Fore Street, Hertford, Hertfordshire, SG14 1BY



70 Fore Street, Hertford, Hertfordshire, SG14 1BY



Approximate Gross Internal Area 1724 sq ft - 160 sq m

Ground Floor Area 866 sq ft – 80 sq m

First Floor Area 858 sq ft – 80 sq m



These particulars, whilst believed to be accurate are set out as a general outline only for guidance and do not constitute any part of an offer or contract. Intending purchasers should not rely on them as statements of representation of fact, but must satisfy themselves by inspection or otherwise as to their accuracy. No person in this firm's employment has the authority to make or give any representation or warranty in respect of the property.



stevenoates.com