



Guide Price
£400,000

Freehold

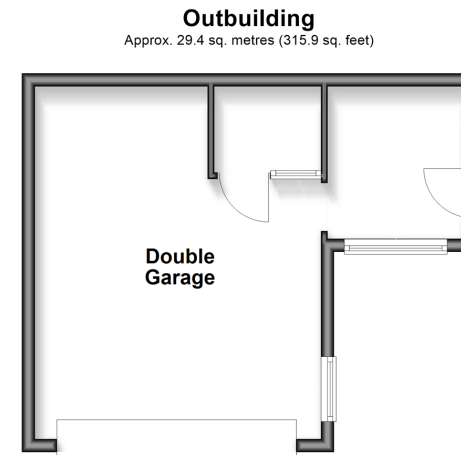
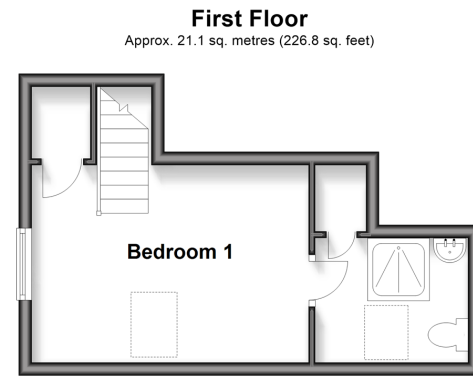
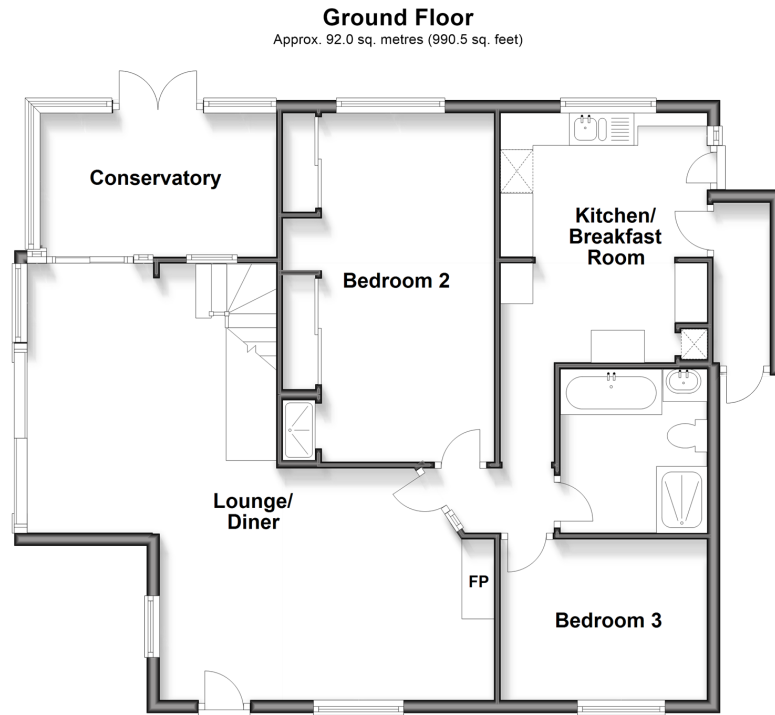
3x  2x  2x 

**Southdown Avenue,
Peacehaven, East
Sussex, BN10**

OVER 60?

Secure this property
for up to **59% less!**

cubitt & west
Helping you move forwards



Accommodation

GROUND FLOOR

Lounge/Diner: 17'0 x 11'6 (5.19m x 3.51m) plus 13'5 x 10'1 (4.09m x 3.08m)

Conservatory: 12'0 x 7'9 (3.66m x 2.36m)

Bedroom 2: 18'6 x 10'5 (5.64m x 3.18m)

Bedroom 3: 10'9 x 7'9 (3.28m x 2.36m)

Kitchen/Diner: 14'2 x 10'9 into door well (4.32m x 3.28m) narrowing to 4'8 x 2'7 (1.42m x 0.79m)

FIRST FLOOR

Bedroom 1: 14'0 x 9'8 (4.27m x 2.95m)

Ensuite shower room

OUTBUILDING

Double Garage: 17'8 x 14'5 (5.39m x 4.40m) narrowing to 7'7 x 9'6 (2.31m x 2.90m)

OUTSIDE

Rear Garden

Driveway



Main features

- Detached chalet bungalow on a good-sized plot
- Main bedroom with an ensuite
- Open plan lounge and dining area
- Conservatory over looking the rear garden
- Double garage complete with off road parking



Nearest Schools

Primary Schools: Hoddern Junior School 1.3 miles, Telscombe Cliffs Community Primary 1.8 miles, Southdown Junior School 1.8 miles

Secondary Schools: Peacehaven Community School 1.2



Transport Information

Train Stations: Newhaven Town 2.4 miles, Newhaven Harbour 2.7 miles, Bishopstone 4.4 miles



Address

Southdown Avenue, Peacehaven, East Sussex, BN10



Directions

For directions to this property please contact us.



cubitt&west
Helping you move forwards

Call Peacehaven Branch 01273 584511 ■ cubittandwest.co.uk



- A private rental licensing scheme applies to some properties in this area, please check with the Local Authority before proceeding
- Appliances & services are untested, dimensions are approximate and floor plans are not to scale

- Legal advice should be taken to verify fixtures/fittings, planning, alterations and/or lease details
- Through a Homewise Home For Life Plan people aged 60+ can secure this property for up to 59% less, by purchasing a Lifetime Lease



31810872/20260218/BH/DGK