



Eastbrooke Village, Maghull, L31

£1,695 Per Month

Deposit Free Option Available

We are pleased to present Eastbrooke Village, a development comprising of two, three and four-bedroom homes in the town of Maghull. Just 10 miles north of Liverpool, and designed with a comfortable and contemporary lifestyle in mind, this development is the ideal sanctuary for young professionals and families alike.

Introducing The Dee, a beautiful four-bedroom family home designed to elevate your lifestyle.

Step into the ground floor, where a spacious living room awaits that offers the perfect space for a cosy night in.

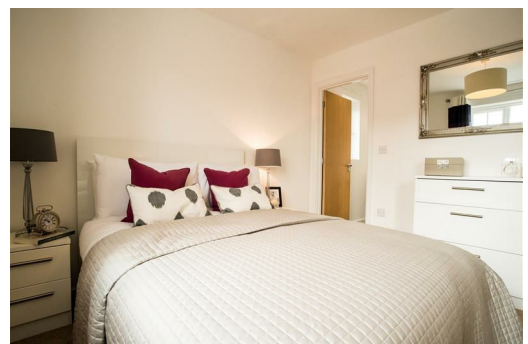
Continuing through the hallway, you'll find convenient features like a downstairs WC and storage space, leading seamlessly into the stunning kitchen/dining area. Adorned with integrated appliances and contemporary units, this space is complemented by charming French doors that open onto your private garden—an ideal setting for relaxing in the great outdoors and hosting summer barbecues.

Venture upstairs to find two generously sized double bedrooms, one being the master suite complete with a built-in wardrobe and en-suite bathroom. Additionally, two single bedrooms await alongside a family-sized bathroom kitted-out with sleek finishes.

And to top it off, The Dee comes equipped with your own private driveway!



1 Little Owl Close, Maghull, L31 1FS



Energy Efficiency Rating		Environmental Impact (CO ₂) Rating	
Current	Potential	Current	Potential
85	95	B	B
80-84	85-94	C	C
75-79	75-84	D	D
70-74	65-74	E	E
65-69	55-64	F	F
60-64	45-54	G	G