



Clifton Court

Northwick Terrace, NW8

£5,500 per month
(£1,269.23 per week)

Large three bedroom apartment with wood floors set in a portered mansion building excellently located for the amenities & transport links of both St Johns Wood and Little Venice.



Clifton Court

Northwick Terrace, NW8

- Spacious Apartment in Portered Mansion Block
- 3 Double Bedrooms
- 2 Bathrooms
- Eat-In Kitchen
- Large Double Reception with wooden floors
- Communal Gardens

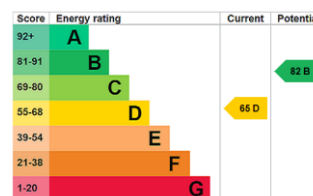


A spacious & bright 2nd floor (with lift) three bedroom property in good condition. Comprising of: Double reception room with wooden floors, large separate kitchen, master bedroom with en-suite and fitted wardrobes, two further bedrooms & family bathroom.

Off street parking available by separate negotiations

* Disclaimer: The photos of the property were taken in person, however some furniture and furnishings items have been computer generated (at actual scale) for illustration purposes only.

Minimum Term: 12 months
Deposit Required: 6 weeks
Local Authority: City of Westminster
Council Tax Band: G
EPC Rating: D
Unfurnished



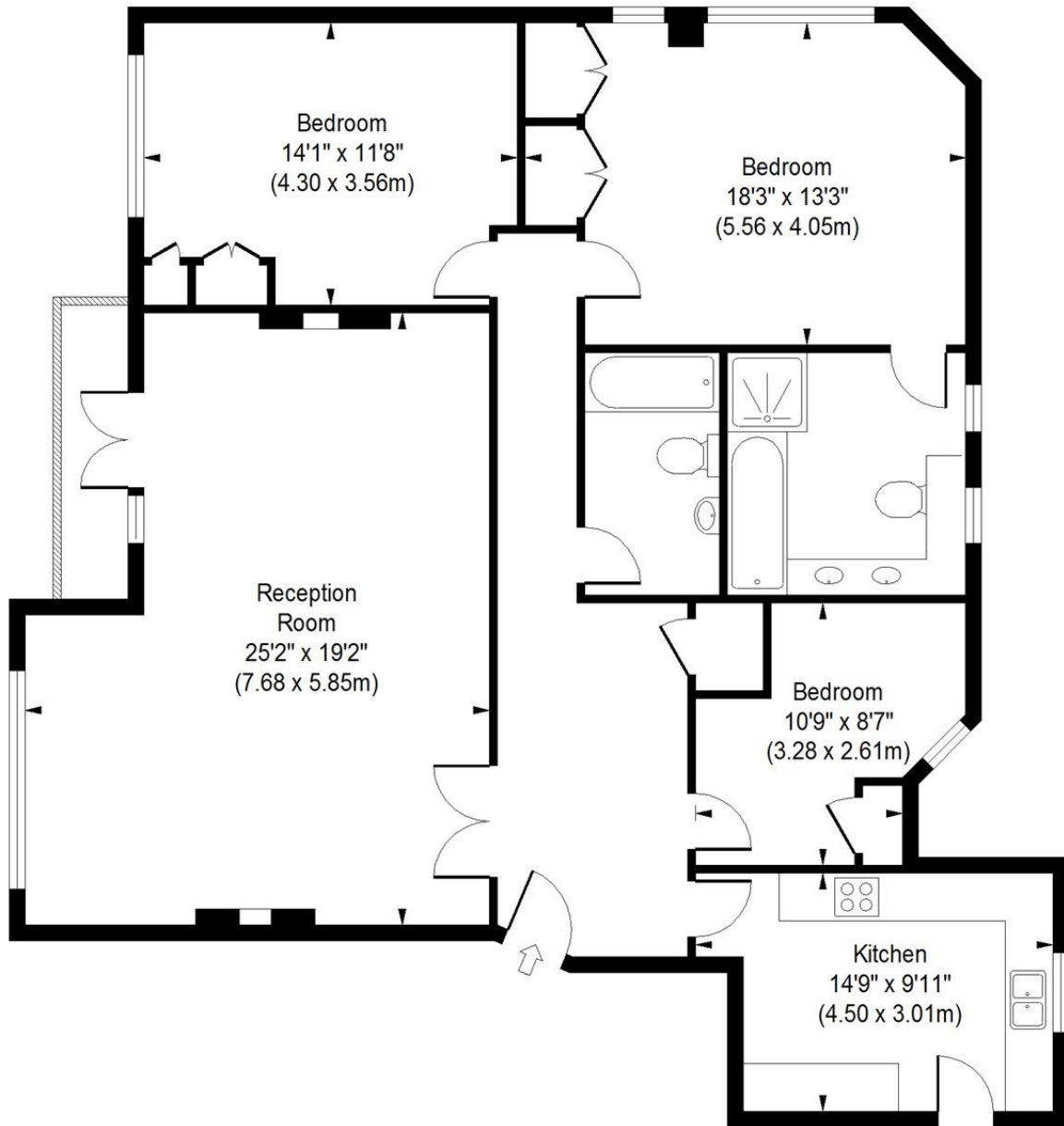
Chestertons Little Venice Lettings

26 Clifton Road
 Maida Vale
 London
 W9 1SX
littlevenicelettingsusers@chestertons.co.uk
 02072662369
[chestertons.co.uk](https://www.chestertons.co.uk)

Additional tenant charges apply (fees apply to non-AST tenancies only)
 Tenancy Agreement Fee: £300
 References per Tenant/Guarantor: £60
 Inventory check (approx. £100 – £250 inc. VAT)
[chestertons.co.uk/property-to-rent/applicable-fees](https://www.chestertons.co.uk/property-to-rent/applicable-fees)

Clifton Court

Approximate Gross Internal Area
1427 sq ft / 132.64 sq m



Third Floor

ILLUSTRATION FOR IDENTIFICATION PURPOSES ONLY

ALL MEASUREMENTS ARE MAXIMUM, AND INCLUDE WINDOW BAYS AND WARDROBES WHERE APPLICABLE
THIS PLAN MUST NOT BE REPRODUCED BY ANY OTHER PERSON WITHOUT PERMISSION

