

OVER 60?

Secure this property
for up to **59% less!**



Guide Price

£650,000

Freehold

4x  2x  1x 

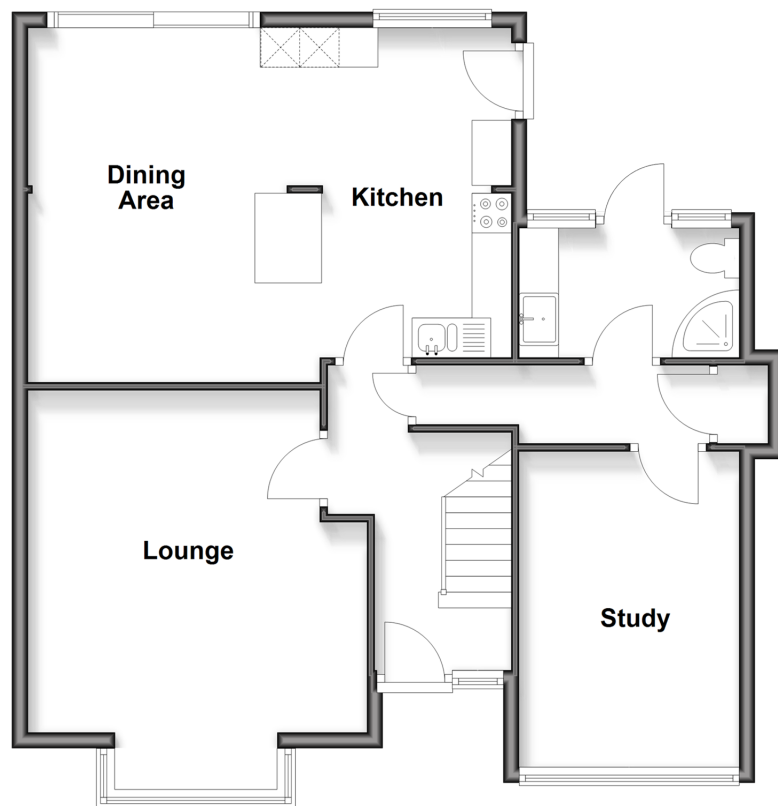
Maplescombe Lane, Farningham, Dartford,
Kent, DA4

Wards

Helping you move forwards

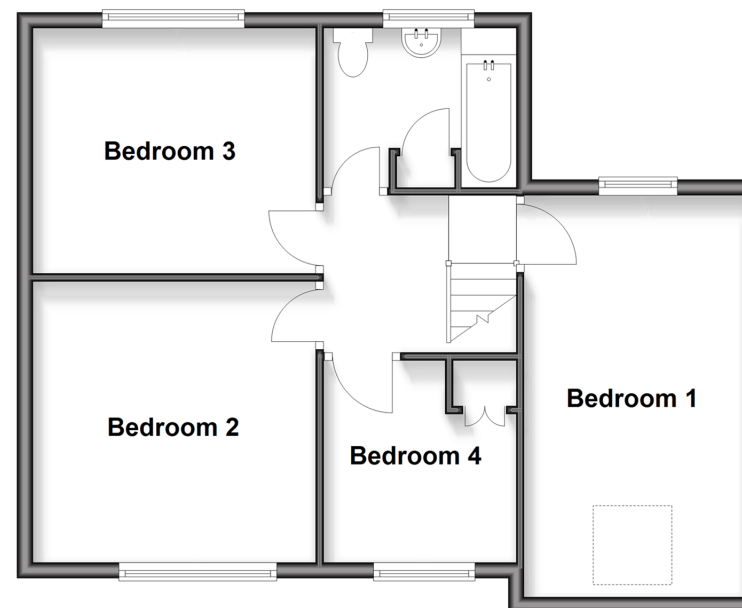
Ground Floor

Approx. 73.9 sq. metres (795.5 sq. feet)



First Floor

Approx. 57.0 sq. metres (613.9 sq. feet)



Accommodation

GROUND FLOOR

Hallway

Lounge: (L-shaped) 14'2 x 12'2 (4.32m x 3.71m) plus 6'9 x 2'4 (2.06m x 0.71m)

Kitchen/Dining Area: 21'1 x 16'3 (6.43m x 4.96m)

Study: 14'2 x 8'8 (4.32m x 2.64m)

Shower Room: 9'0 x 5'5 (2.75m x 1.65m)

FIRST FLOOR

Landing

Bedroom 1: 17'3 x 9'3 (5.26m x 2.82m)

Bedroom 2: 12'2 x 11'11 (3.71m x 3.63m)

Bedroom 3: 12'0 x 10'1 (3.66m x 3.08m)

Bedroom 4: 8'6 x 8'2 (2.59m x 2.49m)

Bathroom: 8'0 x 5'8 (2.44m x 1.73m)

OUTSIDE

Driveway

Front Garden

Rear Garden



Main features

- Stunning rural location with outstanding countryside views
- Private driveway with off-road parking
- Converted garage into a study
- Low maintenance private garden overlooking fields
- Fantastic local walks



Nearest Schools

Primary Schools: West Kingsdown CofE VC Primary 1.9 miles, The Anthony Roper Primary 2.5 miles, Kemsing Primary 3.3 miles

Secondary Schools: Parkwood Hall School 4.1 miles



Transport Information

Train Stations: Eynsford 3.1 miles, Farningham Road 3.8 miles, Kemsing 4.0 miles



Address

Maplescombe Lane, Farningham, Dartford, Kent, DA4



Directions

For directions to this property please contact us.



Wards
Helping you move forwards

Call Eynsford Branch 01322 862844 ■ wardsof Kent.co.uk



- Legal advice should be taken to verify fixtures/fittings, planning, alterations and/or lease details
- Appliances & services are untested, dimensions are approximate and floor plans are not to scale
- Through a Homewise Home For Life Plan people aged 60+ can secure this property for up to 50% less, by purchasing a Lifetime Lease.



12520287/20251008/SJ/LP