



Edith Row, SW6

£992 Per week

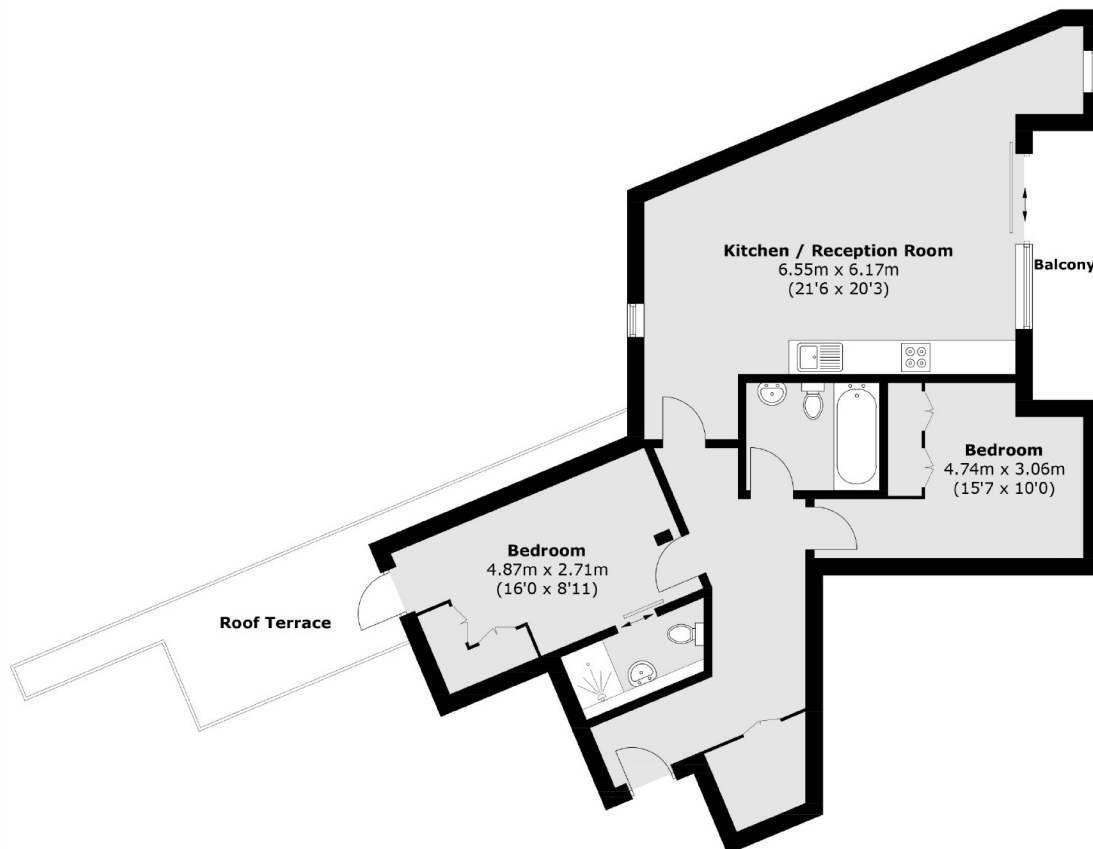
A stunning and immaculately presented two bedroom apartment off the Kings Road. Boasting modern fixtures and fittings throughout the property offers a large open plan kitchen/reception room, two double bedrooms and two bathrooms.

Edith Row is perfectly located off the popular Kings Road with the transport links of Fulham Broadway close by.

Features

- New Build Development
- Wooden Flooring
- Two Bathrooms
- Two Bedrooms
- Kings Road
- Concierge

Edith Row, London, SW6



Total area (approx.): 81.8 sq. m (880.5 sq. ft)
Balcony And Roof Terrace: 18.0 sq. m (193.7 sq. ft)