



## Jubilee Close, NW10

### £350,000

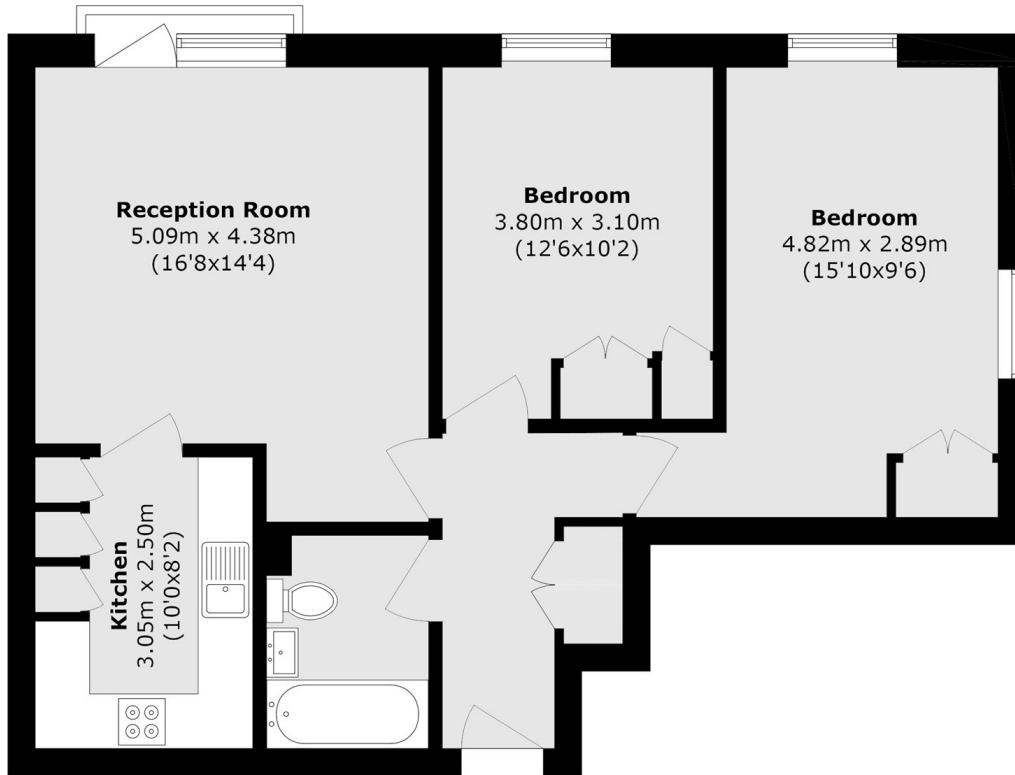
A well-proportioned two bedroom flat set within a purpose-built block, offering practical and comfortable living. The property comprises a bright reception room, a separate kitchen, two bedrooms, and a bathroom.

Jubilee Close is located close to local amenities, cafes, shops and restaurants in Harlesden. Transport links include Willesden Junction (Bakerloo & Overground) and multiple bus routes.

### Features

- Two Double Bedrooms
- Excellent Condition
- Separate Kitchen
- Built-In Storage
- Close To local Amenities
- Purpose Built

# Jubilee Close, London, NW10



Total area (approx.): 68.5 sq. m (737.3 sq. ft)