



Connells

Heroes Drive
Selly Oak



Property Description

Discover this stunning family home set in the ever-popular area of Selly Oak, perfectly positioned close to the renowned Queen Elizabeth Hospital. Offering modern living throughout, this beautifully presented property is truly ready to move into, boasting stylish interiors, generous room sizes, and a range of thoughtful upgrades that set it apart from the rest.

From the moment you step inside, you're greeted by a warm and inviting atmosphere, showcasing a home that has been meticulously maintained and enhanced with impressive additional extras. The heart of the property is the open dining kitchen, a bright and sociable space ideal for family meals, entertaining friends, or simply enjoying everyday living. Adjacent to this, a practical utility room adds convenience and extra storage—perfect for busy households.

One of the standout features is the brick-built conservatory. Expertly constructed and beautifully integrated with the home, this versatile space offers year-round enjoyment. Flooded with natural light, it provides the ideal setting for relaxing, dining, or turning into a playroom or garden-view lounge.

Upstairs, the home continues to impress with three well-proportioned double bedrooms, providing ample space for a growing family or guests. The master bedroom benefits from its own en-suite, adding a touch of luxury and privacy, while the remaining bedrooms are serviced by a stylish family bathroom.

Further enhancing its appeal, the property includes a garage.

Approach

Tucked between the winding residential streets of Selly Oak and the steady pulse of Bristol Road, the new Selly Oak offers excellent opportunities for purchasers.

Hallway

Stairs to first floor, radiator, doors off.

Lounge

17' 3" x 11' (5.26m x 3.35m)

Window to side elevation, TV point, french doors onto conservatory.

Conservatory

17' 3" x 13' 3" (5.26m x 4.04m)

Stunning bespoke brick built conservatory with skylights.

Dining Kitchen

Fitted with a range of matching wall and base units, hob, oven extractor, integrated fridge freezer, dining area ideal to house a table and chairs .

Dining area 10'8 X 8

Kitchen Area 9'3 X 7'7

Utility

Wall mounted boiler, fitted base unit, low flush w.c , sink with mixer tap

Landing

Loft access doors off.

Bedroom 1

17' 3" x 10' 1" (5.26m x 3.07m)

Master bedroom, with dressing area, and en-suite off

En-Suite

Walk in shower, low flush w.c, hand wash basin.

Bedroom 2

9' x 7' 7" (2.74m x 2.31m)

Double bedroom, double glazed window, radiator

Bedroom 3

7' 9" x 7' 7" (2.36m x 2.31m)

Fitted units, double glazed window.

Bathroom

Bath with shower over, low flush w.c, hand wash basin

Garden

Tucked away at the back of the property is a beautifully arranged private rear garden designed with relaxation and practicality in mind. This inviting outdoor space offers a superb blend of greenery and low-maintenance features, making it ideal for busy households or those who simply prefer to enjoy their garden without the need for constant upkeep.

A generous stretch of easy-care patio paving provides the perfect setting for outdoor furniture, barbecues, or a quiet morning coffee, ensuring year-round usability with minimal effort.

Garage

Ideal for storage with parking to the front







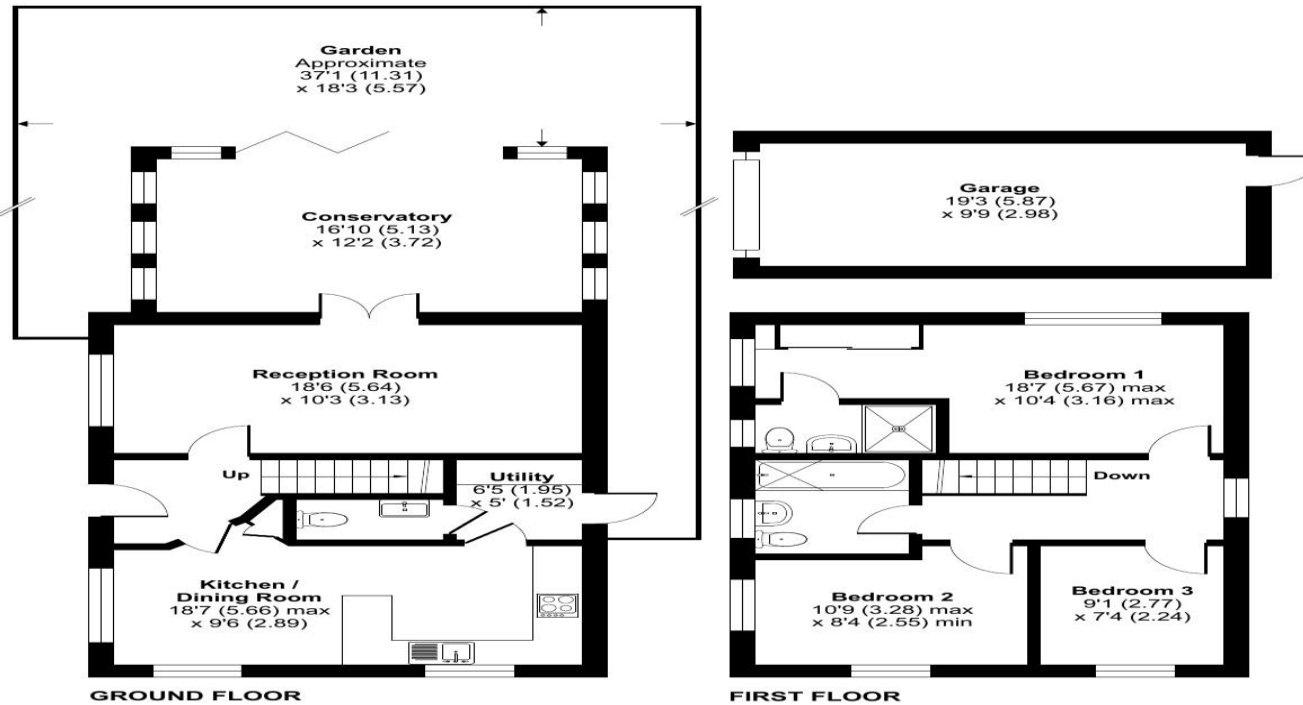
Heroes Drive, Birmingham, B29

Approximate Area = 1226 sq ft / 113.3 sq m

Garage = 188 sq ft / 17.5 sq m

Total = 1414 sq ft / 131.4 sq m

For identification only - Not to scale



Floor plan produced in accordance with RICS Property Measurement 2nd Edition, incorporating International Property Measurement Standards (IPMS2 Residential). © nichecom 2026. Produced for Flyp Homes Limited. REF: 1423329

To view this property please contact Connells on

T 0121 426 2800
E harborne@connells.co.uk

158 High Street Harborne
BIRMINGHAM B17 9QE

EPC Rating: B Council Tax
Band: D

Tenure: Freehold

view this property online connells.co.uk/Property/HBO310828



1. MONEY LAUNDERING REGULATIONS Intending purchasers will be asked to produce identification documentation at a later stage and we would ask for your co-operation in order that there will be no delay in agreeing the sale. 2. These particulars do not constitute part or all of an offer or contract. 3. The measurements indicated are supplied for guidance only and as such must be considered incorrect. Potential buyers are advised to recheck measurements before committing to any expense. 4. We have not tested any apparatus, equipment, fixtures, fittings or services and it is in the buyers interest to check the working condition of any appliances.

Connells Residential is registered in England and Wales under company number 1489613, Registered Office is Cumbria House, 16-20 Hockliffe Street, Leighton Buzzard, Bedfordshire, LU7 1GN. VAT Registration Number is 500 2481 05.

See all our properties at www.connells.co.uk | www.rightmove.co.uk | www.zoopla.co.uk

Property Ref: HBO310828 - 0005