



19 Middle Deal Road, Deal, CT14 9RF
£295,000



19 Middle Deal Road, Deal, CT14 9RF

£295,000

No Onward Chain | Charming Detached Cottage | Sought-After Deal Location

Zest Homes is delighted to present this attractive detached cottage to the market, ideally positioned on the ever-popular Middle Deal Road in Deal. Offered with no onward chain, this property represents an excellent opportunity for buyers seeking a well-located home within easy reach of the town's vibrant amenities, picturesque seafront and mainline railway station.

The ground floor provides spacious and versatile open-plan living accommodation, perfectly suited to modern lifestyles. The impressive living and dining room extends to approximately 19ft in length, creating an inviting environment for both relaxation and entertaining. A fully fitted kitchen complements the layout, while a well-appointed family bathroom completes the ground floor accommodation.

On the first floor, the property continues to impress with two generously sized double bedrooms, offering comfortable and well-proportioned living space.

Externally, the home benefits from two distinct outside areas. To the rear, accessed via a charming stable door, is a low-maintenance garden featuring an attractive patio and faux lawn — ideal for easy upkeep. To the side of the property, a covered patio and storage area provide additional practicality, with convenient access from both the kitchen and the front of the home.

Description

Room Dimensions
Entrance Via;

Living / Dining Room
18'6" x 11'8" (5.64m x 3.56m)

Kitchen
11'3" x 10'2" (3.43m x 3.10m)

Bathroom
9'5" x 5'0" (2.87m x 1.52m)

First Floor Landing

Bedroom One
12'0" x 10'10" (3.66m x 3.30m)

Bedroom Two
9'2" x 8'10" (2.79m x 2.69m)

Front and Side Gardens

Tenure: Freehold

Council Tax Band C

EPC Rating D

Location

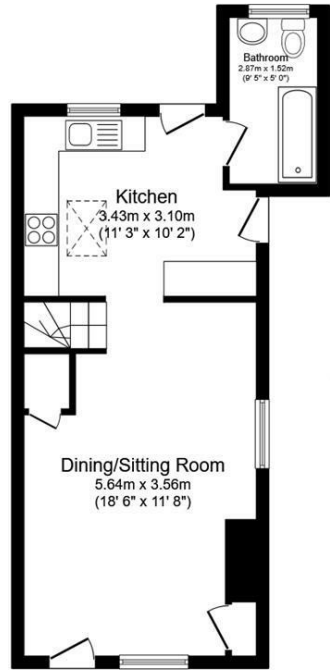
Deal is a highly desirable coastal town on the picturesque east Kent coastline, renowned for its charming character, historic architecture and vibrant seaside lifestyle. Once a thriving maritime hub, the town today blends rich heritage with a welcoming community atmosphere, making it an increasingly popular choice for both permanent residents and second-home buyers.

The town centre offers an excellent selection of independent boutiques, cafés, restaurants and traditional pubs, alongside everyday amenities and supermarkets. Deal's award-winning seafront and far-reaching promenade provide the perfect setting for coastal walks, cycling and outdoor leisure, while the iconic pier and historic Deal Castle add to the town's unique appeal.

For commuters and travellers, Deal benefits from a mainline railway station with direct high-speed services to London St Pancras, making it an attractive option for those seeking coastal living with city connectivity. The nearby port of Dover offers convenient access to Europe, while the surrounding Kent countryside provides an abundance of scenic villages, walking routes and golf courses.

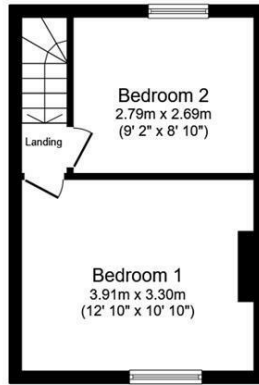
With its blend of seaside charm, strong sense of community and excellent transport links, Deal continues to attract buyers looking for lifestyle, investment potential and long-term desirability on the Kent coast.





Ground Floor

Floor area 41.0 sq.m. (441 sq.ft.)

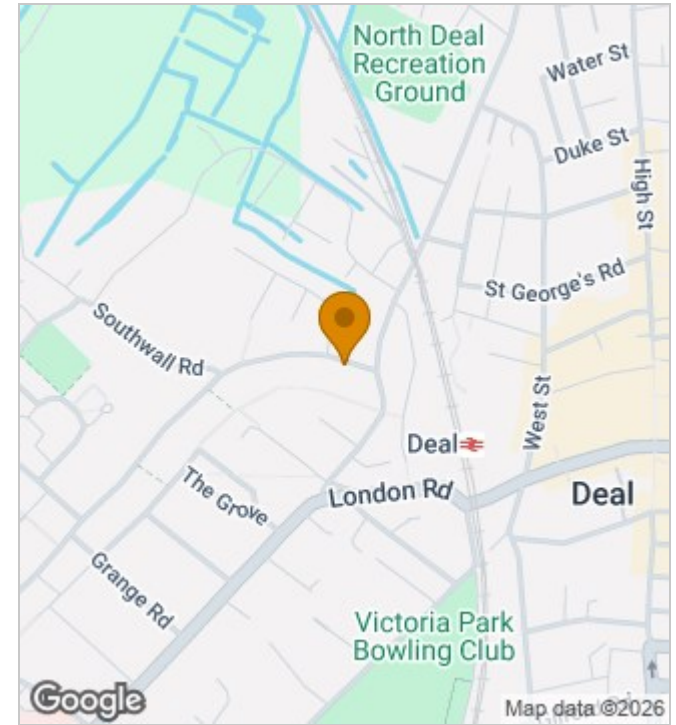


First Floor

Floor area 24.4 sq.m. (262 sq.ft.)

Total floor area: 65.4 sq.m. (704 sq.ft.)

This floor plan is for illustrative purposes only. It is not drawn to scale. Any measurements, floor areas (including any total floor area), openings and orientations are approximate. No details are guaranteed, they cannot be relied upon for any purpose and do not form any part of any agreement. No liability is taken for any error, omission or misstatement. A party must rely upon its own inspection(s). Powered by www.Propertybox.io



Energy Efficiency Rating

	Current	Potential
Very energy efficient - lower running costs		
(92 plus) A		
(81-91) B		83
(69-80) C		
(55-68) D	56	
(39-54) E		
(21-38) F		
(1-20) G		
Not energy efficient - higher running costs		
England & Wales	EU Directive 2002/91/EC	

190 High Street, Herne Bay, Kent, CT6 5AP
 Tel: 01227 949291 | Email: sales@zesthomes.uk
 www.zesthomes.uk

1. Money Laundering Regulations: Please note all sellers and intended purchasers will receive an 'On Boarding' link to verify their identity. This is a legal requirement prior to a sale or purchase proceeding.
2. All measurements stated on our details and floorplans are approximate and as such can not be relied upon and do not form part of any contracts.
3. Zest Homes have not tested any services, equipment or appliances and it is therefore the responsibility of any buyer/tenant to do so.
4. Photographs and marketing material are produced as a guide only and legal advice should be sought to verify fixtures and fittings, planning, alterations and lease details.
5. Zest Homes hold the copyright to all advertising material used to market this property.