



Fallden Way, Hampstead Garden Suburb, NW11

Leasehold

£498,000



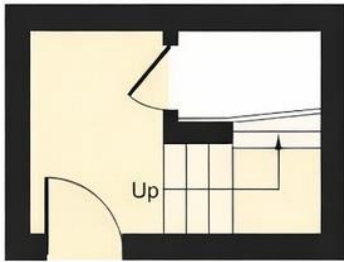
800 Finchley Road, Hampstead Garden Suburb, London, NW11 7TJ
020 8458 5000
sales@litchfields.com
www.litchfields.com

Offices also in Highgate

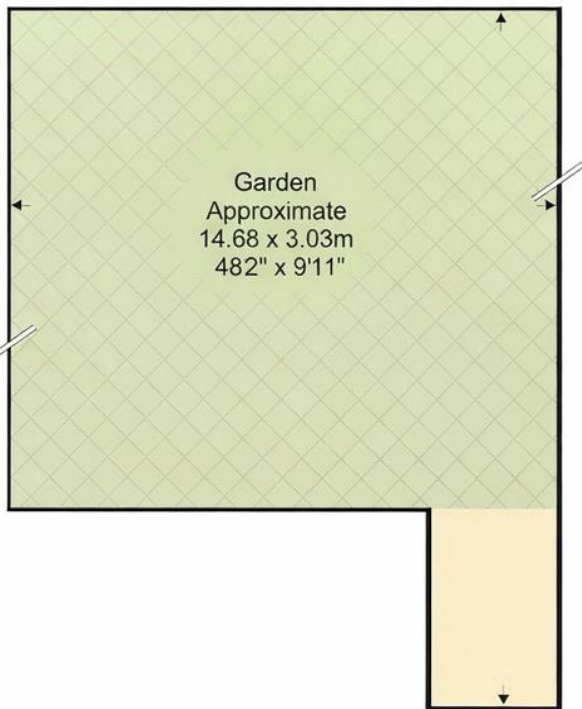
A lovely 2 bedroom first floor flat located within a moments walk to the shops, cafes and transport links of The Market Place. The property is accessed via its own entrance and is presented in very good internal decorative condition benefitting from a private south facing rear garden with views over Northways playing fields. Viewing is recommended.



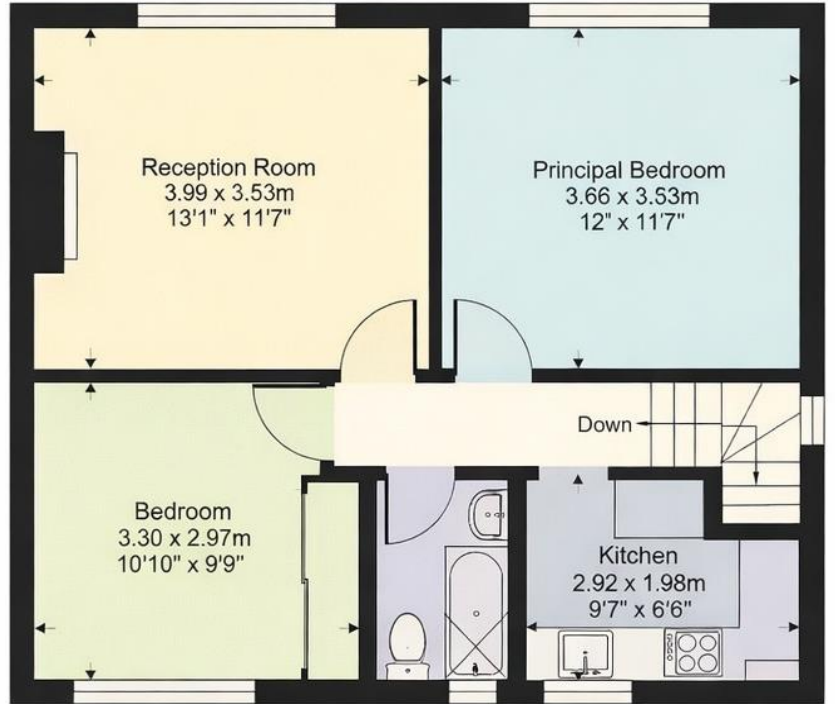
2 bedrooms | Lounge | Kitchen | Bathroom | Private rear garden | Loft storage | EPC=C



Ground floor



Garden
Approximate
14.68 x 3.03m
482" x 9'11"



First floor

Approximate Area = 624 sq ft / 57.9 sq m

For identification only - Not to scale

For similar properties please visit our website www.litchfields.com

Or call us on 020 8458 5000