



Kenley Road, TW1

£675,000

Located in the heart of St Margarets village, is this beautifully presented first floor split-level two double bedroom maisonette. The property comes with a private garden and beautiful original features.

Kenley Road is a quiet residential road in the heart of St Margarets village. Within 0.2 miles of the mainline train station with its links into London Waterloo, shops and cafés of the village high street. Moor Mead Park and Marble Hill Park are also close by.

Features

- Two Bedrooms
- Excellent Condition
- Central Location
- Low Charges
- Split-Level
- Private Garden



Kenley Road, TW1

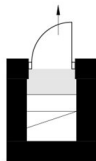
Enter on the ground floor via your own private front door, with stairs leading up to the first floor. To the rear of the property is a larger-than-average open-plan kitchen and dining area perfect for entertaining. This bright and spacious room provides direct access to a private garden, which also benefits from rear access ideal for bike storage. Also on this floor is a fully fitted family bathroom, a generous double bedroom and a separate living room.

The loft has been thoughtfully converted to create a spacious principal bedroom with an en suite shower room.

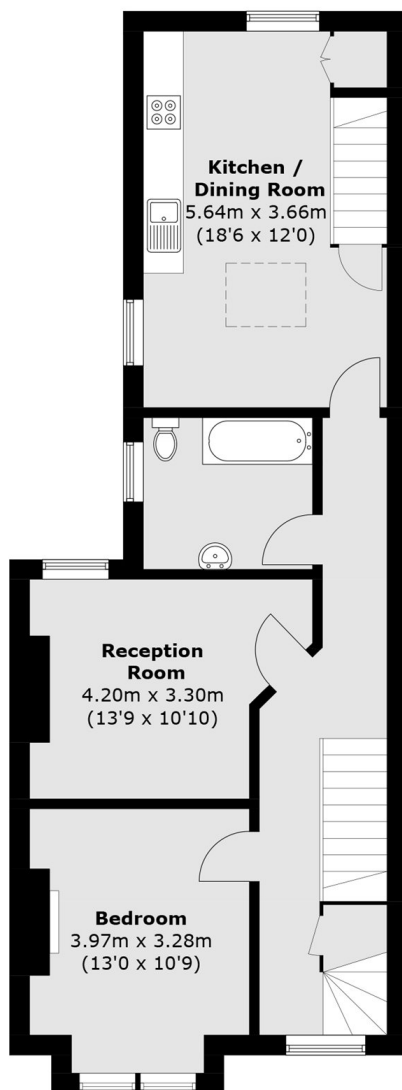


Kenley Road, St Margarets, TW1

To Garden

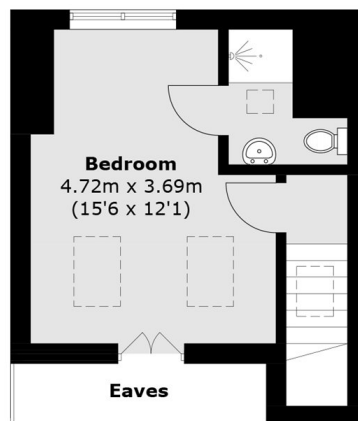


Ground Floor



Ground Floor

First Floor



Second Floor

Total area (approx.): 93.8 sq. m (1,009.5 sq. ft)
(Excluding Eaves)