



GUILDCREST ESTATES



The Oak, 27 Mill Field, Ash, Canterbury CT3 2BD



3



2



2



GUILDCREST ESTATES

Mill Field, Ash, Canterbury CT3 2BD

Asking price £495,000

This wonderful semi-detached, 3 bedroom family home sits in a quiet, private cul de sac set in the picturesque village of Ash. Each home has been carefully designed with all the benefits of a brand new home whilst ensuring the countryside charm has been tastefully kept, with tile hung fascia, weatherboarding and detailed flint walls, these characterful houses sit beautifully in their countryside surroundings.

As you enter this lovely home, you step into a bright entrance hall which leads to a generously sized lounge that overlooks the garden, cloakroom/WC and a spacious open plan kitchen/diner. The bespoke fitted kitchen comes with a breakfast bar, beautiful quartz worktops and integrated appliances which include a fridge/freezer, dishwasher, oven & gas hob and washer dryer.

Upstairs you will find 3 double bedrooms, the master has an en suite, a generous sized family bathroom and a further room that would be an ideal office, dressing room or 4th bedroom.

Outside is the landscaped front garden, paved driveway, garage, charging point, outside lighting and rear access to the garden. The rear garden is laid to lawn with a large patio area, outside tap and close board fencing with natural hedging.



- | | |
|---------|----------------|
| PLOT 11 | THE BIRCH |
| PLOT 12 | THE OAK |
| PLOT 13 | THE HAWTHORN |
| PLOT 14 | THE ASPEN |
| PLOT 15 | THE MAPLE |
| PLOT 16 | THE HORNBEAM |
| PLOT 17 | THE ROWAN |
| PLOT 18 | THE WILLOW |
| PLOT 19 | THE BLACKTHORN |



A short distance from the historic town of Sandwich and Cathedral City of Canterbury, this quaint village is in a perfect location with an abundance of local amenities. Shops, doctors, a pub and restaurants. Sandwich train station is 4 miles away, a direct link to Charing Cross. Good motorway links too.

To register your interest, arrange a viewing or for more information on this property call us today on 01843 272200.

Freehold

Council Tax Band - TBC

Mains Water, Sewer, Electricity, Gas with Gas Central Heating

Fixed Wireless Broadband

Service Charge - TBC

1533 sq ft / 142 sq m





GUILDCREST ESTATES

Key Features

- SEMI-DETACHED NEW BUILD PROPERTY
- 3 LARGE BEDROOMS
- LARGE KITCHEN / DINER
- MASTER BEDROOM WITH EN-SUITE
- OFFICE ROOM
- VILLAGE LOCATION
- INTEGRATED APPLIANCES
- LARGE GARDEN WITH PATIO AREA
- 2 CAR DRIVEWAY
- GARAGE

Important Information

Freehold

House - Semi-Detached

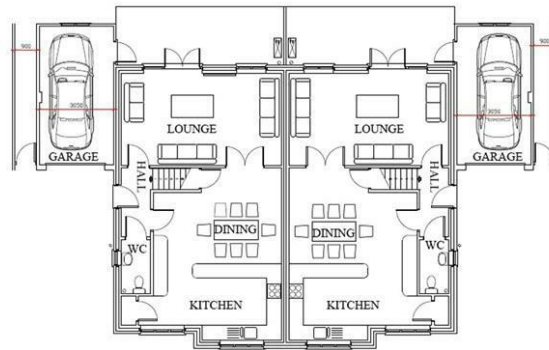
1533.00 sq ft / 142 sq m

Council Tax Band New Build

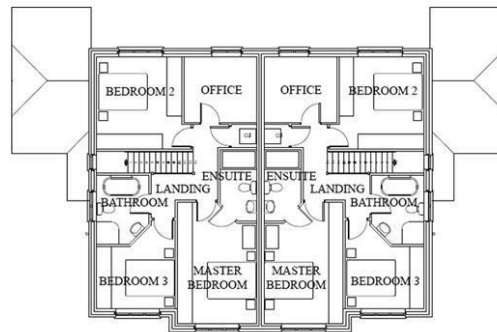
EPC Rating

Service Charge - TBC

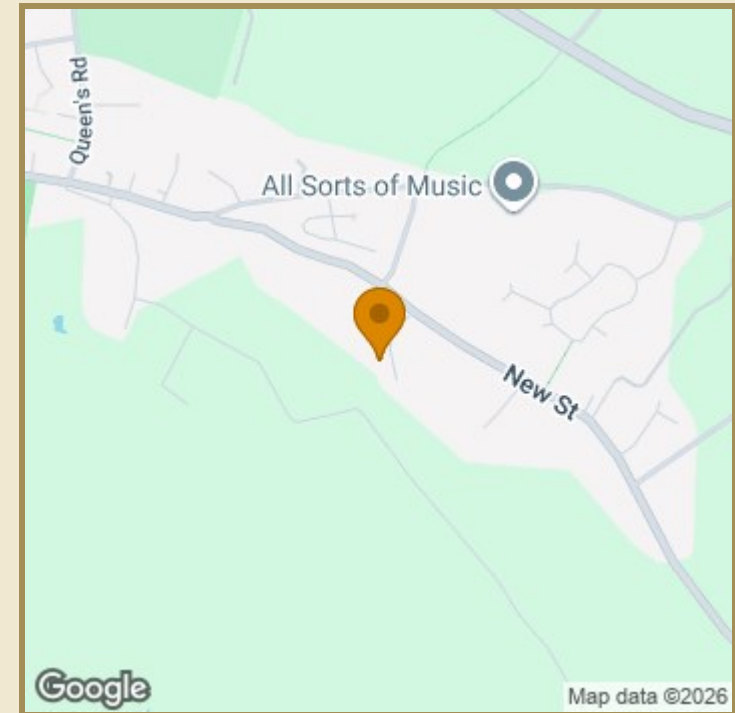
£495,000



GROUND FLOOR GROUND FLOOR



FIRST FLOOR FIRST FLOOR



Energy Efficiency Rating		
	Current	Potential
Very energy efficient - lower running costs		
(92 plus) A		
(81-91) B		
(69-80) C		
(55-68) D		
(39-54) E		
(21-38) F		
(1-20) G		
Not energy efficient - higher running costs		
England & Wales		EU Directive 2002/91/EC

Environmental Impact (CO ₂) Rating		
	Current	Potential
Very environmentally friendly - lower CO ₂ emissions		
(92 plus) A		
(81-91) B		
(69-80) C		
(55-68) D		
(39-54) E		
(21-38) F		
(1-20) G		
Not environmentally friendly - higher CO ₂ emissions		
England & Wales		EU Directive 2002/91/EC



01227 696000 www.guildcrestestates.co.uk

24 Lower Bridge Street, Canterbury, Kent CT1 2LG



Guildcrest Estates Ltd. Registered Office 1 Percy Road, Broadstairs, Kent CT10 3LB Company Number: 13135084 Registered In England & Wales | VAT Number: 374 4288 71

Disclaimer These particulars, whilst believed to be accurate are set out as a general outline only for guidance and do not constitute any part of an offer or contract. Intending purchasers should not rely on them as statements of representation of fact, but must satisfy themselves by inspection or otherwise as to their accuracy. No person in this firm's employment has the authority to make or give any representation or warranty in respect of the property.