



Ash Road, BIRMINGHAM B8 1DW

welcome to

Ash Road, BIRMINGHAM

****FULLY REFURBISHED**END OF TERRACE**THROUGH LOUNGE**FITTED KITCHEN**DOWNSTAIRS SHOWER ROOM**THREE BEDROOMS**CLOSE TO THE CITY CENTER****



Lounge

Double-glazed bay window to the front, double-glazed patio door to rear garden, two ceiling light points, two radiators, laminate flooring, doors to stairs to first floor and access to kitchen.

Kitchen

Double-glazed window to side, roof light, two ceiling light points, cupboards, drawers and base units, roll top worksurface, stainless sink and drainer, hob, oven and cooker hood, plumbing for washing machine, tiled walls and floor and door to shower room,

Shower Room

Double-glazed window to rear, ceiling light point, heated towel rail, vanity sink, low level w.c, thermostatic mixer shower, tiled wall and floor.

Landing

Loft access, ceiling light point and double-glazed window to side.

Bedroom One

Double-glazed window to front, radiator, ceiling light point and laminate flooring.

Bedroom Two

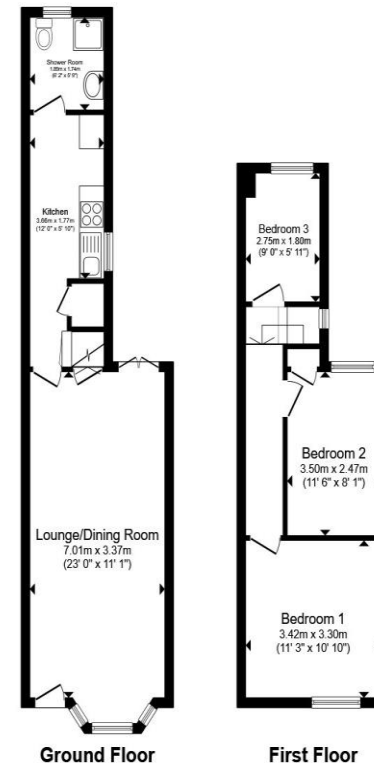
Double-glazed window to rear, radiator, ceiling light point and laminate flooring.

Bedroom Three

Double-glazed window to rear, radiator, ceiling light point and laminate flooring.

Rear Garden

Enclosed area leading to rear garden, paved, shed, enclosed by fencing.



Total floor area 68.2 m² (734 sq.ft.) approx

This floor plan is for illustrative purposes only. It is not drawn to scale. Any measurements, floor areas (including any total floor area), openings and orientation are approximate. No details are guaranteed, they cannot be relied upon for any purpose and they do not form part of any agreement. No liability is taken for any error, omission or misstatement. A party must rely upon its own inspection(s). Powered by www.propertybox.io

 shipways



view this property online shipways.co.uk/Property/CAB112343



welcome to

Ash Road, BIRMINGHAM

- THREE BEDROOMS
- END OF TERRACE
- THROUGH LOUNGE
- FITTED KITCHEN
- DOWNSTAIRS SHOWER ROOM

Tenure: Freehold EPC Rating: Awaited
Council Tax Band: A

offers over

£200,000



Please note the marker reflects the postcode not the actual property

view this property online shipways.co.uk/Property/CAB112343



Property Ref:
CAB112343 - 0003

1. MONEY LAUNDERING REGULATIONS Intending purchasers will be asked to produce identification documentation at a later stage and we would ask for your co-operation in order that there is no delay in agreeing the sale. 2. These particulars do not constitute part or all of an offer or contract. 3. The measurements indicated are supplied for guidance only and as such must be considered incorrect. Potential buyers are advised to recheck measurements before committing to any expense. 4. We have not tested any apparatus, equipment, fixtures or services and it is in the buyers interest to check the working condition of any appliances. 5. Where an EPC, or a Home Report (Scotland only) is held for this property, it is available for inspection at the branch by appointment. If you require a printed version of a Home Report, you will need to pay a reasonable production charge reflecting printing and other costs. 6. We are not able to offer an opinion either written or verbal on the content of these reports and this must be obtained from your legal representative. 7. Whilst we take care in preparing these reports, a buyer should ensure that his/her legal representative confirms as soon as possible all matters relating to title including the extent and boundaries of the property and other important matters before exchange of contracts.

Shipways is a trading name of Sequence (UK) Limited which is registered in England and Wales under company number 4268443, Registered Office is Cumbria House, 16-20 Hockliffe Street, Leighton Buzzard, Bedfordshire, LU7 1GN. VAT Registration Number is 500 2481 05.

shipways



0121 747 4722



castlebromwich@shipways.co.uk



258 Chester Road, Castle Bromwich,
BIRMINGHAM, West Midlands, B36 0JE



shipways.co.uk