



Flat - Purpose Built (EPC Rating: C)

# QUEEN CAROLINE STREET LONDON, W6 9RD

Per month

## £4,950 Per

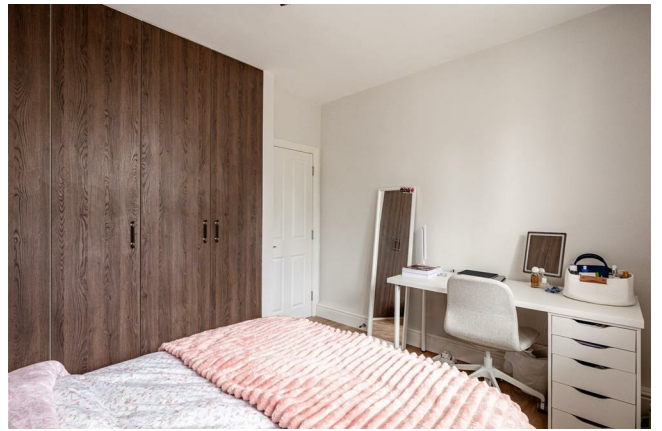
ALEXANDER STEER  
Estate Agents



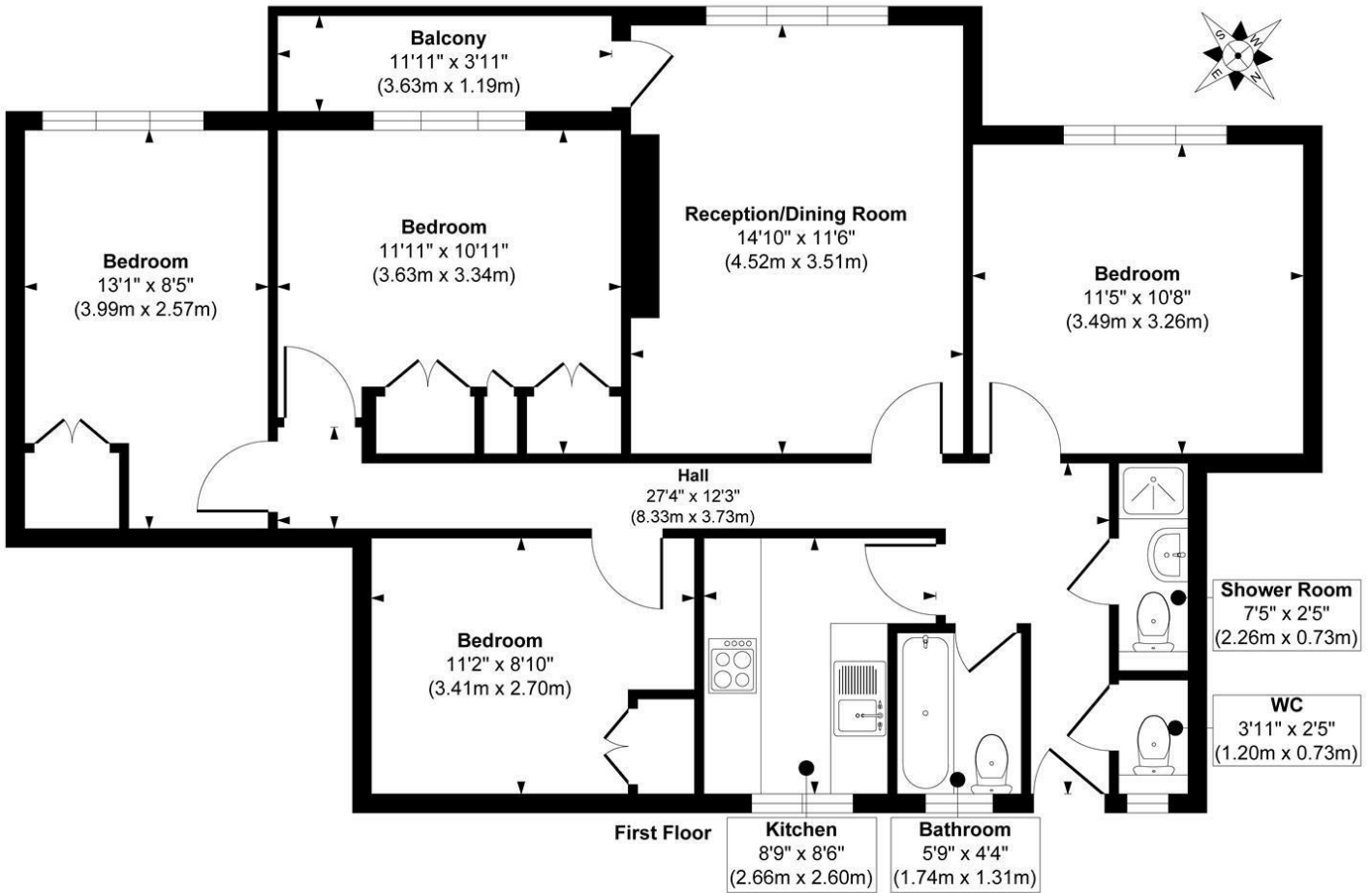
# 4 BEDROOM FLAT - PURPOSE BUILT LOCATED IN LONDON

**SHARER FRIENDLY** - This newly refurbished apartment has been dressed to a high standard throughout and benefits from four double bedrooms, two bathrooms and a separate kitchen with with direct access to a private balcony.

The property is located on Queen Caroline Street, which offers incredible access to Hammersmith Broadway and a short walk to the Thames, as well as a selection of local cafe's and bars making this area perfect for working professionals.



## Margaret House



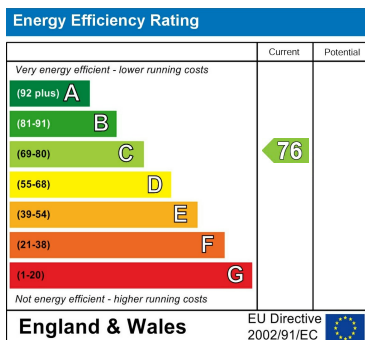
**Approx. Gross Internal Floor Area 896 sq. ft / 83.23 sq. m**

Illustration for identification purposes only, measurements are approximate, not to scale.

Produced by Elements Property

Council Tax Band

Energy Performance Graph



Call us on

**0203 822 0111**

**hello@alexandersteer.co.uk**

**alexandersteer.co.uk**



@ALEXANDERSTEERPROPERTY

Agents Note: Whilst every care has been taken to prepare these particulars, they are for guidance purposes only. All measurements are approximate and are for general guidance purposes only and whilst every care has been taken to ensure their accuracy, they should not be relied upon and potential buyers are advised to recheck the measurements.

**ALEXANDER STEER**  
Estate Agents