

L·D·B

SALES, LETTINGS
& MANAGEMENT



VERA ROAD, LONDON

LDB ARE PROUD TO PRESENT VERA ROAD, THIS CHARMING TWO-BEDROOM FLAT OFFERS A DELIGHTFUL BLEND OF COMFORT AND CONVENIENCE. SPANNING AN IMPRESSIVE 700 SQUARE FEET, THE PROPERTY FEATURES A WELL-APPOINTED RECEPTION ROOM THAT SERVES AS THE PERFECT SPACE FOR RELAXATION.

ONE OF THE STANDOUT FEATURES OF THIS PROPERTY IS ITS PRIME LOCATION. SITUATED CLOSE TO BISHOPS PARK, RESIDENTS CAN ENJOY LEISURELY STROLLS IN THE GREENERY AND AROUND FULHAM PALACE. ADDITIONALLY, THE FLAT IS CONVENIENTLY LOCATED NEAR A VARIETY OF COFFEE SHOPS AND RESTAURANTS, ALLOWING FOR EASY ACCESS TO LOCAL AMENITIES AND VIBRANT DINING OPTIONS.

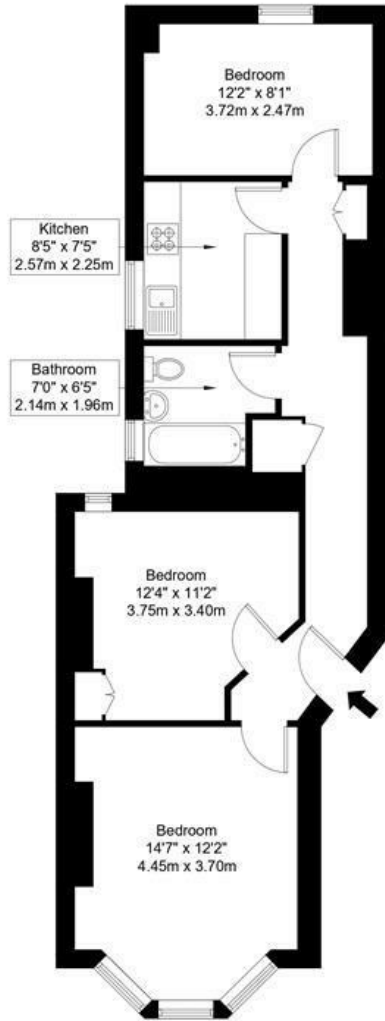
THE PEACEFUL SETTING OF VERA ROAD ENHANCES THE APPEAL OF THIS FLAT, MAKING IT A PERFECT RETREAT FROM THE HUSTLE AND BUSTLE OF CITY LIFE.

- CLOSE TO BISHOPS PARK
- BRIGHT AND SPACIOUS
- CLOSE TO AMENITIES

£2,300 PER CALENDAR MONTH

Vera Road, SW6 6RN

Approx Gross Internal Area = 59.49 sq m / 640 sq ft



First Floor

Ref :

Copyright **BLEU PLAN**

The Floor plan is not to scale and measurements and areas shown are approximate and therefore should be used for illustrative purposes only. The plan has been prepared in accordance with the RICS code of Measuring Practice and whilst we have confidence in the information produced it must not be relied on. Maximum lengths and widths are represented on the floor plan. If there is any aspect of particular importance, you should carry out or commission your own inspection of the property.
Copyright @ BleuPlan

Energy Efficiency Rating		Current	Potential
Very energy efficient - lower running costs			
(92 plus) A			
(81-91) B			
(69-80) C			
(55-68) D			
(39-54) E			
(21-38) F			
(1-20) G			
Not energy efficient - higher running costs			
		70	80
England & Wales	EU Directive 2002/91/EC		

Environmental Impact (CO ₂) Rating		Current	Potential
Very environmentally friendly - lower CO ₂ emissions			
(92 plus) A			
(81-91) B			
(69-80) C			
(55-68) D			
(39-54) E			
(21-38) F			
(1-20) G			
Not environmentally friendly - higher CO ₂ emissions			
England & Wales	EU Directive 2002/91/EC		