

SNELLERS

ESTATE AGENTS



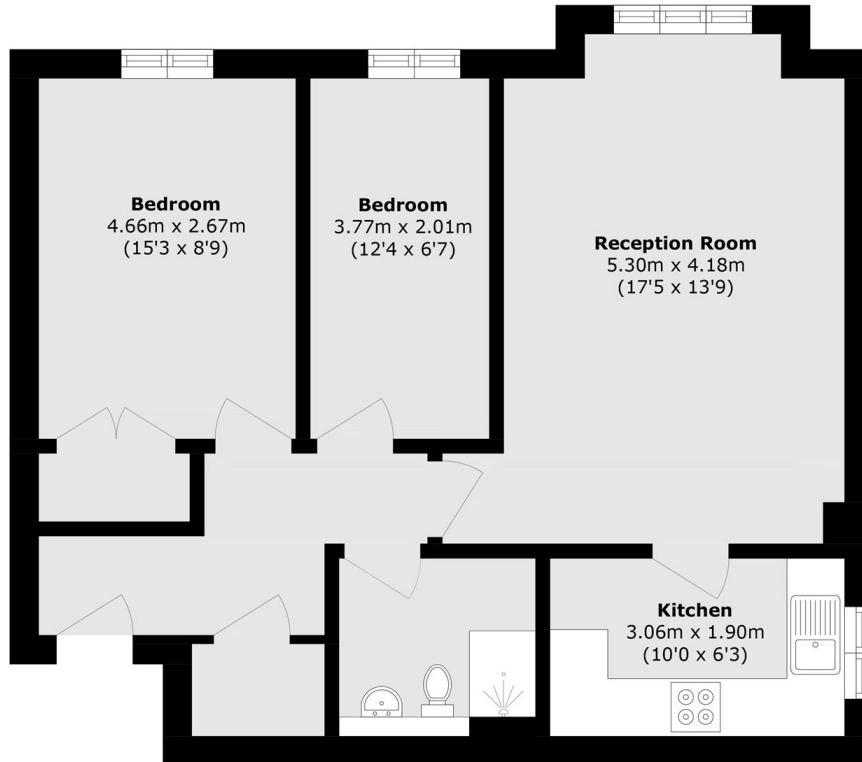
Draymans Way, TW7

£335,000

This lovely two double bedroom flat is the kind of place that just feels easy to live in. It's bright, well laid out and tucked away in a peaceful spot, yet still incredibly convenient for getting around. With a spacious reception room, a separate contemporary kitchen, allocated parking and no onward chain, it's ready and waiting for someone to move straight in and make it their own.

Location-wise, it's a real winner. The setting is wonderfully quiet, giving you that tucked-away feel, yet Isleworth station is close by, making commuting or heading into central London straightforward. You've got the best of both worlds peace and practicality. Whether you're buying your first place, downsizing, or investing, this is a flat that makes everyday living feel simple and comfortable.

- Large Reception • Separate Kitchen • Two Double Bedrooms •
- Communal Gardens • No Chain • Allocated Parking •



Total area (approx.): 56.5 sq. m (608.1 sq. ft)

Snellers St. Margarets Sales
36 Crown Road
St Margarets
TW1 3EH
020 8892 8008
stmargaretssales@snellers.co.uk

Energy Rating: C We aim to make our particulars both accurate and reliable. However they are not guaranteed; nor do they form part of an offer or contract. If you require clarification on any points then please contact us, especially if you're traveling some distance to view. Please note that appliances and heating systems have not been tested and therefore no warranties can be given as to their good working order