



## COPENHAGEN STREET, N1

£2,650 pcm

LiFE is pleased to present this furnished two bedroom 1 bathroom apartment moments away from Kings Cross station, located in a contemporary scheme of luxury 1 and 2 bedroom apartments in N1. Kings Quarter has been carefully designed to be an elegant, yet practical development

- Available NOW
- Flexible Furnishing
- Private Balcony
- 2 bedroom / 1 bathroom

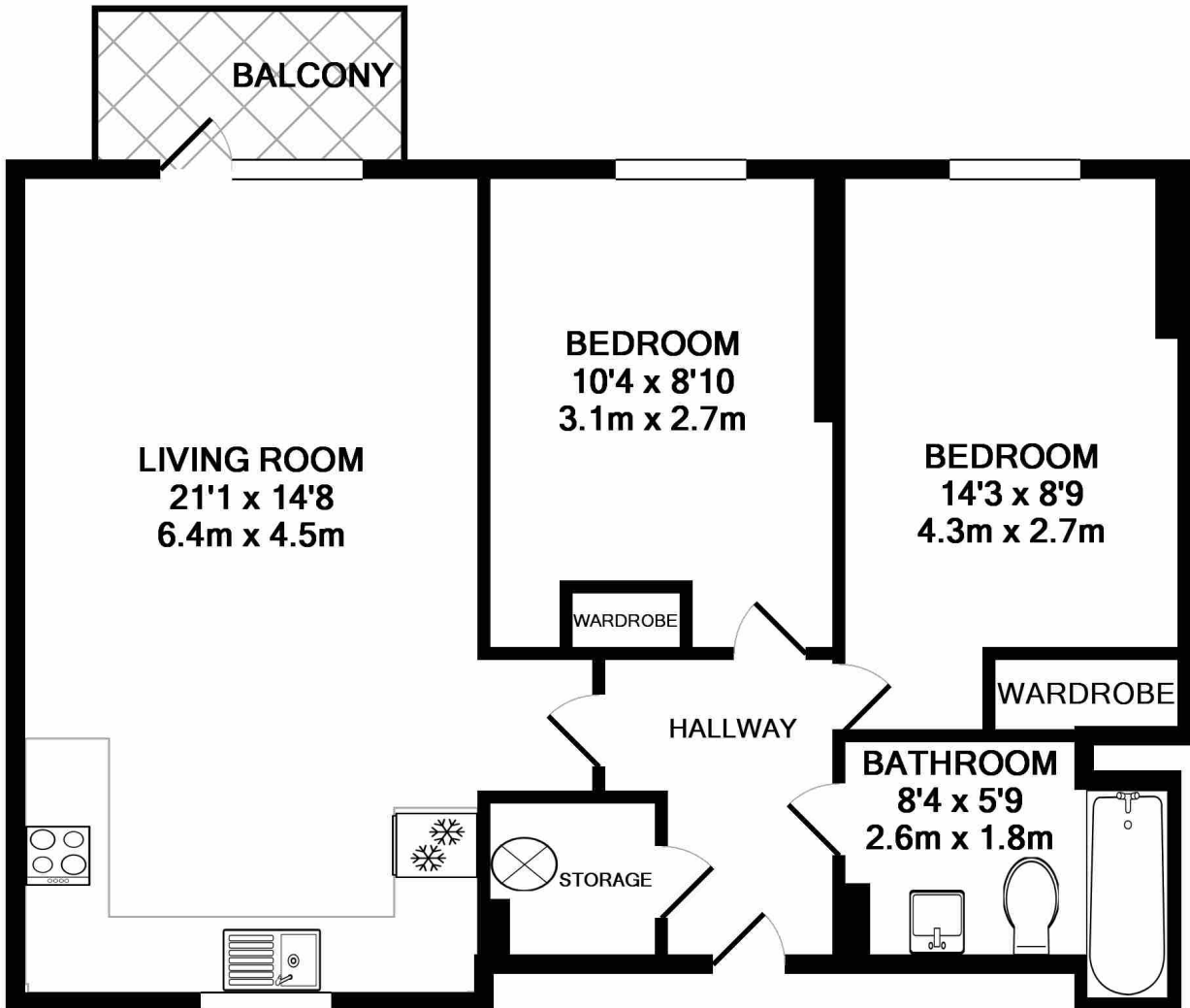


## ABOUT THE HOME

Kings Quarter has outstanding transport connections being walking distance to Kings Cross St Pancras.







TOTAL APPROX. FLOOR AREA 587 SQ.FT. (54.5 SQ.M.)

Whilst every attempt has been made to ensure the accuracy of the floor plan contained here, measurements of doors, windows, rooms and any other items are approximate and no responsibility is taken for any error, omission, or mis-statement. This plan is for illustrative purposes only and should be used as such by any prospective purchaser. The services, systems and appliances shown have not been tested and no guarantee as to their operability or efficiency can be given

Made with Metropix ©2017

**LiFE RESIDENTIAL**

71 Drayton Park, London, N5

1BF

Sales: 020 3838 8666

Lettings: 020 7359 4488

Energy Rating: B. We aim to make our particulars both accurate and reliable. However they are not guaranteed; nor do they form part of an offer or contract. If you require clarification on any points then please contact us, especially if you're traveling some distance to view. Please note that appliances and heating systems have not been tested and therefore no warranties can be given as to their good working order.