



Connells

Plough Close
Aylesbury



Property Description

Offered to the market with NO UPPER CHAIN, this well-presented semi-detached house provides an excellent opportunity for families and buyers seeking a home with space, practicality and future potential. The accommodation comprises two reception rooms, offering flexible living and dining areas, alongside a well-appointed fitted kitchen with ample storage and workspace, and the added convenience of an additional cloakroom. Upstairs, the property benefits from three well-proportioned bedrooms, and a family bathroom.

Externally, the home features an easily maintainable rear garden, ideal for both relaxation and entertaining, as well as off-street parking for two vehicles and a garage. For those looking to enhance the property further, there is potential to extend (STPP).

Situated in a quiet residential area, the property is well located for access to local schools, shops, and everyday amenities, while Aylesbury town centre is within easy reach, offering a wider range of shopping, leisure and dining options. Excellent transport links, including nearby road and rail connections, make this an ideal choice for commuters. Overall, this property represents an ideal family home with plenty to offer both now and in the future.

Entrance Hall

Door to front aspect, stairs to first floor landing.

Cloakroom

WC, wash hand basin.

Living Room

Window to front aspect, under-stairs storage.

Dining Room

Windows to rear aspect, door to rear garden.

Kitchen / Diner

Fitted kitchen comprised of wall and base units with work surfaces and tiling to complement, window to side aspect, sink with drainer, cooker point, plumbing for washing machine, space for fridge/freezer.

First Floor Landing

Stairs from entrance hall.

Bedroom One

Window to rear aspect, fitted wardrobes.

Bedroom Two

Window to front aspect.

Bedroom Three

Window to rear aspect.

Bathroom

Window to front aspect, bath with mixer taps and overhead shower, vanity wash hand basin, WC, heated towel rail.

Outside

Front Garden

Rear Garden

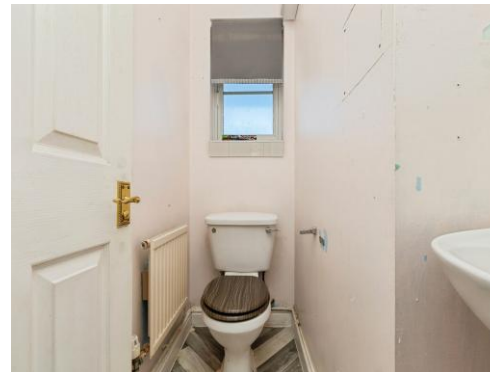
Laid lawn, side access, shed.

Parking

Off-street parking to side of property for two vehicles.

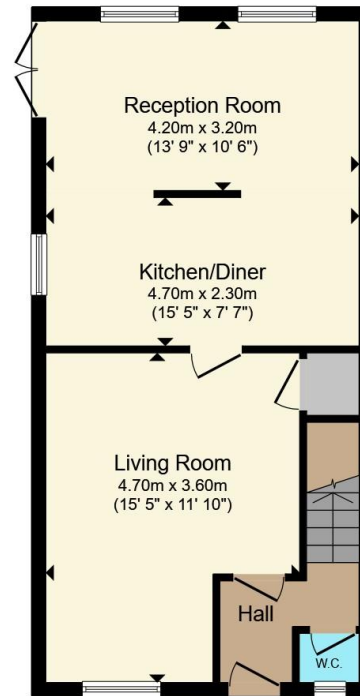
Garage

Up and over door.

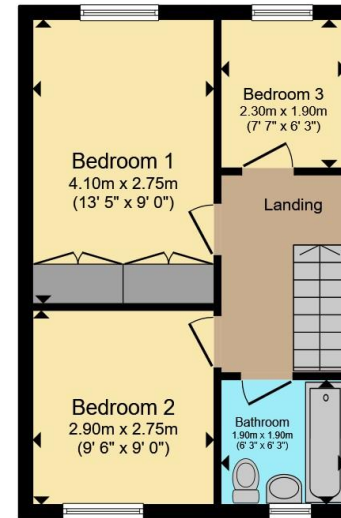








Ground Floor



First Floor

Total floor area 82.7 m² (890 sq.ft.) approx

This floor plan is for illustrative purposes only. It is not drawn to scale. Any measurements, floor areas (including any total floor area), openings and orientation are approximate. No details are guaranteed, they cannot be relied upon for any purpose and they do not form part of any agreement. No liability is taken for any error, omission or misstatement. A party must rely upon its own inspection(s). Powered by www.propertybox.io



To view this property please contact Connells on

T 01296 395710
E fairfordleys@connells.co.uk

6 Hampden Square
AYLESBURY HP19 7HT

EPC Rating: D Council Tax
Band: D

Tenure: Freehold

view this property online connells.co.uk/Property/LEY304802



1. MONEY LAUNDERING REGULATIONS Intending purchasers will be asked to produce identification documentation at a later stage and we would ask for your co-operation in order that there will be no delay in agreeing the sale. 2. These particulars do not constitute part or all of an offer or contract. 3. The measurements indicated are supplied for guidance only and as such must be considered incorrect. Potential buyers are advised to recheck measurements before committing to any expense. 4. We have not tested any apparatus, equipment, fixtures, fittings or services and it is in the buyers interest to check the working condition of any appliances.

Connells Residential is registered in England and Wales under company number 1489613, Registered Office is Cumbria House, 16-20 Hockliffe Street, Leighton Buzzard, Bedfordshire, LU7 1GN. VAT Registration Number is 500 2481 05.

See all our properties at www.connells.co.uk | www.rightmove.co.uk | www.zoopla.co.uk

Property Ref: LEY304802 - 0003